



STAR FOX

A S S A U L T

INSTRUCTION BOOKLET

EmuMovies



PLEASE CAREFULLY READ THE SEPARATE HEALTH AND SAFETY PRECAUTIONS BOOKLET INCLUDED WITH THIS PRODUCT BEFORE USING YOUR NINTENDO® HARDWARE SYSTEM, GAME DISC OR ACCESSORY. THIS BOOKLET CONTAINS IMPORTANT HEALTH AND SAFETY INFORMATION.

IMPORTANT SAFETY INFORMATION: READ THE FOLLOWING WARNINGS BEFORE YOU OR YOUR CHILD PLAY VIDEO GAMES

⚠ WARNING - Seizures

- Some people (about 1 in 4000) may have seizures or blackouts triggered by light flashes or patterns, such as while watching TV or playing video games, even if they have never had a seizure before.
- Anyone who has had a seizure, loss of awareness, or other symptom linked to an epileptic condition should consult a doctor before playing a video game.
- Parents should watch when their children play video games. Stop playing and consult a doctor if you or your child have any of the following symptoms:

Convulsions	Eye or muscle twitching	Loss of awareness
Altered vision	Involuntary movements	Disorientation

To reduce the likelihood of a seizure when playing video games:

1. Sit or stand as far from the screen as possible.
2. Play video games on the smallest available television screen.
3. Do not play if you are tired or need sleep.
4. Play in a well-lit room.
5. Take a 10 to 15 minute break every hour.

⚠ WARNING - Repetitive Motion Injuries and Eyestrain

Playing video games can make your muscles, joints, skin or eyes hurt after a few hours. Follow these instructions to avoid problems such as tendinitis, carpal tunnel syndrome, skin irritation or eyestrain:

- Avoid excessive play. It is recommended that parents monitor their children for appropriate play.
- Take a 10 to 15 minute break every hour, even if you don't think you need it.
- If your hands, wrists, arms or eyes become tired or sore while playing, stop and rest them for several hours before playing again.
- If you continue to have sore hands, wrists, arms or eyes during or after play, stop playing and see a doctor.

⚠ WARNING - Electric Shock

To avoid electric shock when you use this system:

- Do not use the Nintendo GameCube during a lightning storm. There may be a risk of electric shock from lightning.
- Use only the AC adapter that comes with your system.
- Do not use the AC adapter if it has damaged, split or broken cords or wires.
- Make sure that the AC adapter cord is fully inserted into the wall outlet or extension cord.
- Always carefully disconnect all plugs by pulling on the plug and not on the cord. Make sure the Nintendo GameCube power switch is turned OFF before removing the AC adapter cord from an outlet.

⚠ CAUTION - Motion Sickness

Playing video games can cause motion sickness. If you or your child feel dizzy or nauseous when playing video games with this system, stop playing and rest. Do not drive or engage in other demanding activity until you feel better.

⚠ CAUTION - Laser Device

The Nintendo GameCube is a Class I laser product. Do not attempt to disassemble the Nintendo GameCube. Refer servicing to qualified personnel only. Caution - Use of controls or adjustments or procedures other than those specified herein may result in hazardous radiation exposure.

CONTROLLER NEUTRAL POSITION RESET

If the L or R Buttons are pressed or the Control Stick or C Stick are moved out of neutral position when the power is turned ON, those positions will be set as the neutral position, causing incorrect game control during game play.

To reset the controller, release all buttons and sticks to allow them to return to the correct neutral position, then hold down the X, Y and START/PAUSE Buttons simultaneously for 3 seconds.



The official seal is your assurance that this product is licensed or manufactured by Nintendo. Always look for this seal when buying video game systems, accessories, games and related products.



Nintendo does not license the sale or use of products without the Official Nintendo Seal.



1-4 Player
Simultaneous

**THIS GAME SUPPORTS
SIMULTANEOUS GAME PLAY
WITH ONE, TWO, THREE OR
FOUR PLAYERS AND
CONTROLLERS.**



Progressive Scan
compatible

**THIS GAME IS COMPATIBLE
WITH PROGRESSIVE MODE TVs.**



Memory
Card

**THIS GAME REQUIRES A
MEMORY CARD FOR SAVING
GAME PROGRESS, SETTINGS
OR STATISTICS.**

NEED HELP PLAYING A GAME?

You can visit our website at www.nintendo.com for game play information. For automated game play tips and news, call Nintendo's Power Line at: 1-425-885-7529. This may be a long distance call, so please ask permission from whomever pays the phone bill.

Rather talk with a game counselor?

1-800-521-0900

Available in U.S. and Canada - \$1.50 per minute (U.S. funds)
Please have Visa or MasterCard ready

MON. - SUN., 6:00 a.m. to 7:00 p.m., Pacific Time

Callers under 18 need to obtain parental permission to call. Prices subject to change.

TTY Game Play Assistance: 425-883-9714



Nintendo

namco

© 2004-2005 NINTENDO. © 2004-2005 NAMCO. COPYRIGHTS OF ALL PROGRAM RESERVED BY NAMCO. COPYRIGHTS OF ALL GAME, CHARACTERS, SCENARIO, AND MUSIC, EXCEPT COPYRIGHTS OWNED BY NAMCO, RESERVED BY NINTENDO, TM, ® AND THE NINTENDO GAMECUBE LOGO ARE TRADEMARKS OF NINTENDO. © 2005 NINTENDO. ALL RIGHTS RESERVED.

CONTENTS

THE HISTORY OF STAR FOX	06
GAME CONTROLS	08
GETTING STARTED	12
GAME SCREENS	14
SINGLE	16
RULES	16
GETTING STARTED	18
STORY	20
MISSION	22
SURVIVAL	23
VS. MODE	24
OPTIONS	28
BONUS GAME	29
ACTIONS	30
ADVICE	32
MACHINES	33
WEAPONS	34
ITEMS	35
CHARACTERS	36
WARRANTY AND SERVICE INFORMATION	43



THE HISTORY OF STAR FOX

Andross's Ambition (Star Fox® 64)

Corneria, the fourth planet of the peaceful Lylat system, is threatened by the forces of the mad scientist Andross. In response to this crisis, the Cornerian commander-in-chief, General Pepper, entrusts the fate of the planet to Fox, Falco, Slippy, and Peppy, who together form the Star Fox team.

After many vicious battles, the mercenaries reach the enemy stronghold on the planet Venom, where Fox challenges Andross to single combat. After a pitched battle, Fox narrowly defeats Andross and the threat is vanquished.

The Plight of Sauria (Star Fox Adventures)

A few years after the Andross affair, Fox is hired to investigate the planet Sauria. After adventuring across the surface, he reveals Andross as the culprit behind the troubles. The team is forced into a ferocious battle, but when it seems all is lost, Falco rejoins the team in the nick of time and Star Fox once again defeats Andross.

With the reinstatement of Falco and the addition of the mysterious young woman, Krystal, a new Star Fox team is born.

A New Journey (Star Fox: Assault)

One year has passed...

After getting kicked out of Star Wolf's band of thugs, Andrew Oikonny takes control of his dead uncle Andross's remaining army and starts a rebellion. The Cornerian fleet is sent out to deal with the rebels and hostilities commence. However, Oikonny's army uses unexpected guerilla tactics and the battle takes a turn for the worse.

The exasperated General Pepper asks his old friend Peppy to help stop Oikonny and the Star Fox team takes off on a new mission!

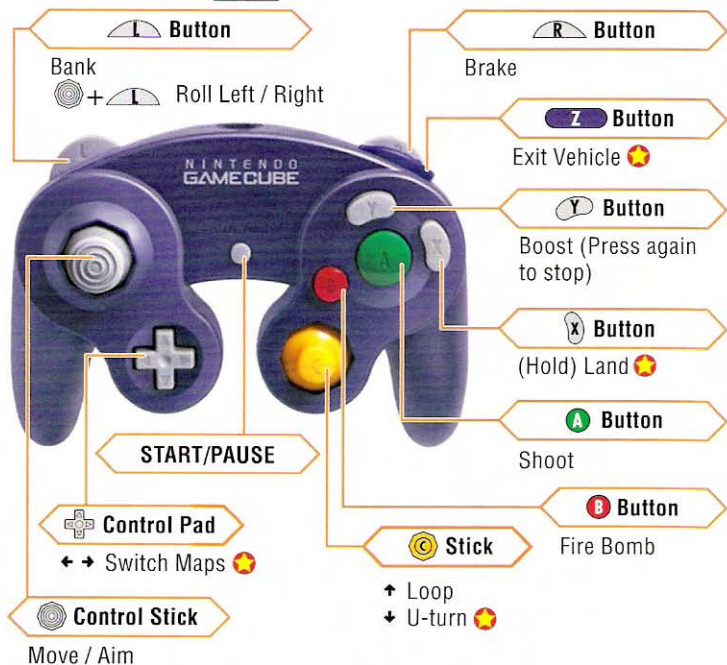
GAME CONTROLS

There are three Controller setups in Star Fox: Assault. The Arwing controls are the same in each setup.

SINGLE-STICK CONTROL

A basic configuration where you move with and attack with .

• Arwing Controls pg. 33



★ Only used on all-range stages.

pg. 15

• Landmaster Controls pg. 33

	Fix Alignment
+	(← →) Slide
 	(Press Hard) Roll Left / Right
	Move
	Switch Maps

+	Aim
	Exit Vehicle
	Hover (Press again to stop.)
/	Boost
	Shoot

• Pilot Controls

	Fix Alignment
+	Slide
 	(Press Hard) Roll Left / Right
	Move
	Switch Maps
+	Aim

	Enter Vehicles / Taunt
	Jump
	Scope On / Off (When sniper rifle is equipped.) pg. 34
	Shoot
	Use Barrier
	Switch Weapons

Basic Controls on Menu Screens

	Select Menu Item		Cancel Selection
	Select Menu Item	START/PAUSE	Pause Menu
	Confirm Selection	pg. 17	

Control Icon Display

The + pairing means to press and hold while moving .

Shooting

If you have a charged shot (pg. 31) while in a Landmaster or Arwing, you'll lock onto an enemy. This is consistent across all Controller setups.

GETTING STARTED

Put the *Star Fox: Assault* Game Disc into the Nintendo GameCube and insert a Memory Card into Slot A. Close the Disc Cover and press the POWER Button.

MAIN MENU

Press START/PAUSE or **A** on the Title screen to display the Main menu. This is where you choose the game mode you want to play. Use **○** or **+** to choose a game mode and press **A** to confirm.



SINGLE MODE

pgs. 16-23

In Single mode you clear missions to progress through the story. There are three different styles of game play here: Story, Mission, and Survival. Survival will become available once you have cleared the Story mode.



VS. MODE

pgs. 24-27

Up to four players can compete in Vs. Mode. There are many different stages available and the rules can be changed to suit your mood.



OPTIONS

pg. 28

Select Options to view records and adjust Controller and sound settings.



BONUS GAME

pg. 29

After you've collected all of the silver badges, you can come here to play the bonus game, Xevious.



ABOUT SAVING

In order to save *Star Fox: Assault* game data you will need to insert a Memory Card into Slot A that has at least 1 file and **5 empty blocks** available. Single-mode data will be saved after the results screen (pg. 21) is displayed. Changes made in the Options menu and Vs. mode results will be saved automatically.

Please do not touch the Memory Card or POWER Button while data is being saved, as this may damage the Nintendo GameCube or the Memory Card.

To learn how to manage Memory Card files or format a Memory Card, please see the Nintendo GameCube Instruction Booklet.

GAME SCREENS

There are two types of stages: shooting stages and all-range stages. The screen displays differ slightly between the two.

SHOOTING STAGES

Stages where you pilot Arwings through 3-D environments are shooting stages. Proceed to the goals of the stages to clear them.

Number of Hits

Targeting Cursor

The direction you're attacking.

Arwing

Number of Bombs

Shield

Your ship's endurance. If this reaches zero, you lose a ship.

Boost Gauge

This goes down each time you brake, boost, loop, or do a U-turn. The gauge fills up little by little as time passes.



Communication Window

This shows message text and the face of the character contacting you. In some cases it will also show the character's vehicle endurance or physical health.

Remaining Ships

The number of ships you have left. If this reaches zero, your game is over.

ALL-RANGE STAGES

Stages where you control Fox and move around a contained area are all-range stages. You clear these stages by destroying a set number of targets. You can also pilot Arwings and drive Landmasters (pg. 33) on some all-range stages. When you change weapons in Pilot mode, the name of the new weapon is displayed.

Might Gauge

On select stages, this gauge shows you increases and decreases in enemy numbers.

Targeting Cursor

The shape of the targeting cursor changes depending on your current weapon.

Number of Barriers

Shield

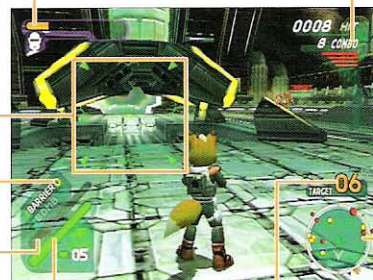
The endurance of the vehicle you're using. If this reaches zero, the vehicle will be destroyed and only Fox will be displayed.

Life Gauge

This shows Fox's health. If this reaches zero you will lose one life.

Combo Number **pg. 17**

The current combo number appears here.



Number of Targets

Radar

This shows the location of Fox, enemies, vehicles, etc. Press Left and Right on to switch maps.

Fox	Allies
Airborne	Surface
Targets	Arwings
Landmasters	

Ally icons will be colored differently for each character.

SINGLE MODE

These are the rules used in Single mode. Whether the missions are shooting stages or all-range stages is predetermined.

BASIC RULES

Take control of Fox and complete missions to clear individual stages and proceed through the game. If you're hit by enemy attacks or run into obstacles, you will take damage. If your life gauge or shield drops to zero, you will lose a life or ship and begin the mission again.

GAME OVER

If you have no remaining lives or ships and your life gauge or shield drops to zero, the game will end and the Title screen will display.



SWITCHING VEHICLES

On all-range stages, you can use both Arwings and Landmasters. You can change vehicles at any time. See page 30 to learn how to change vehicles.



GROUP BONUS AND BLAST BONUS

On shooting stages, you can receive group bonuses for taking out entire squadrons of enemy ships. You can also get blast bonuses if you destroy five or more enemies with a single attack. When you get bonuses you receive more hit points than normal. Blast bonuses are relative to the number of enemies you destroy, so the higher the number, the bigger the bonus.


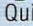
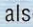


COMBO BONUS

On all-range stages, a red gauge will appear when you defeat an enemy; if you topple another enemy while the gauge is still displayed you'll receive a combo. For every 10 enemies in a combo, you'll add a bonus to your hit score.



PAUSE MENU

Press START/PAUSE during missions to display the Pause menu. To continue from the Pause menu, select Continue with  or , then confirm by pressing . To quit, select Quit and confirm the same way. The Pause menu also displays the amount of time you've spent on the current mission and any special flags (pg. 32) you've acquired.



SINGLE MODE

GETTING STARTED

Select **Single** on the Main Menu, then choose **New User** to move to the Name Entry screen.

NAME ENTRY

Enter your name and create your player data file here. Player data files contain your game progress, Vs. records, and other information.

NAME ENTRY

This is where you name your own personal data file. Use or to select letters, then press to confirm. Select **Done** when you are finished to complete the name-entry process. Press to delete the previous letter, and use or to shift character sets. Once a name has been entered it can never be altered.



CONTROLLER SETUP

Next, you will choose the Controller configuration you want to use. Use or to select a type then press to confirm. You can press to see details on each Controller setup.



DETAILED SETUP

After you choose your Controller setup, you will see one more screen of setup options. Press **Up** and **Down** with or to select a menu option, then press **Left** and **Right** to change the setup. Select **Done** to finish.

Invert Y Axis Arwing	Choose whether or not to invert the Y axis for Arwing control.
Invert Y Axis Landmaster	Choose whether or not to invert the Y axis for Landmaster control.
Invert Y Axis Pilot	Choose whether or not to invert the Y axis for character control.
Rumble	Choose to enable or disable the Rumble Feature.

SELECT PLAYER

Choose which player data to use. Use either or to select player data and press to confirm. You can view the player's progress on the right side of the screen.



SELECT GAME

Choose from **Story** (pg. 20), **Mission** (pg. 22), and **Survival** (pg. 23) with either or , then confirm your selection with .



SINGLE MODE STORY

Fox and his team face off against the destructive power of the enigmatic aliens known as aparoids. Clear each mission to progress to the next.

BEGINNING/CONTINUE

Choose from either Beginning or Continue to start playing. Select Beginning if you're just starting or Continue if you already have saved game data available. Use or to make your selection and press to confirm. If you have saved game data and choose Beginning, your old saved game data will be overwritten once you complete the first mission.



SELECT DIFFICULTY

Next, choose the game's difficulty level. Use or to choose from Bronze, Silver, or Gold levels and press to confirm. You can only choose a difficulty level if you've chosen Beginning and are starting the game from Mission 1.



BRIEFING

Briefings will give you introductions to missions and explain their goals. Scroll through briefing conversations with or press START/PAUSE to end briefings. When you choose to continue previous games, you will start from briefing screens.



RESULT SCREEN

This screen displays at the end of missions and shows the corresponding scores. If your mission points exceed the badge score line, you'll receive a badge. There are three badges, one for each difficulty level. Do your best to get them all.

Category	Value
Kills	622 HIT
Time Bonus	00h06m39s 251 HIT
Difficulty Bonus	BRONZE LEVEL
Mission Score	873 HIT
Badge Score	400 HIT
Total Score	3154 HIT

Team members who survive a mission are labeled as Safe, while those who take too much damage and are forced to return to the Great Fox are labeled as Retired.

SAVE SCREEN

Once you press on the Result screen, a message asking whether or not you want to overwrite the current game file will display. Choose either Yes or No with or and then press to confirm.

SINGLE MODE MISSION

This mode allows you to go back and replay any mission that you've previously cleared.

SELECT MISSION

Use either or to choose a mission, then press to confirm. Flags you've collected and scores for each mission will be displayed on the right portion of the screen. If you clear a mission with a high score and no deaths, the score will be displayed in blue.



SELECT DIFFICULTY

Select the mission difficulty with or and confirm with . There are three difficulty levels to choose from; Bronze, Silver, and Gold.



RESULT

Once you clear a mission, the Result screen will display. The screen display is the same as that in Story mode. Press here to move on to the Save screen. Choose whether or not to save with or and confirm with .



SINGLE MODE SURVIVAL

Survival mode will become available once you have cleared the Story mode on any difficulty level. Survival mode challenges you to finish every mission without saving.

SELECT DIFFICULTY

Select the mission difficulty with or and confirm with . There are three difficulty levels to choose from; Bronze, Silver, and Gold.



RESULT

Once you clear a mission, the Result screen will display. The screen display is the same as that in Story mode. Press here to move to the next mission.



ABOUT SAVING IN SURVIVAL MODE

You cannot save between missions in Survival mode. However, you will be asked whether or not you want to save from Game Over screens and once you have cleared every mission. Please choose Yes and save.



VS. MODE

This is a battle mode for up to four players. Beginners can be given handicaps to put them on even ground with more advanced players.

SELECT NUMBER OF PLAYERS

You can choose from between 2-player, 3-player, and 4-player games. When playing with three or more players, follow the on-screen instructions to complete team setup.



SELECT STAGE

Choose the stage you will play on with or and use to confirm. Press to set up game rules (pg. 25) or press to randomly select a stage.



SELECT VEHICLES

Choose the vehicles to be available on the stage you've chosen. Use or to select the Pilot, Arwing, or Landmaster icon, then press to choose to use or not use the selected vehicle.

Icon Color Codes



Red: Pre-selected



Blue: Use



Gray: Don't use

RULE CHANGES

Press on the Stage-Selection screen to change the Vs. mode rules. Use either or to select a rule set and press to confirm. Once you select a rule set, you will see the settings for that set. Follow the on-screen explanations and complete the rules setup.



SELECT PLAYER

This is where you choose the character you will use. First, select the player data you will use, and then choose the character you want to play as with or , and then press to confirm. You can create new player data by pressing or view character abilities (pg. 36) by pressing .



HANDICAPS

After characters have been chosen, the handicap setting bar will display. Choose from None, Low, and High with or and press to confirm. Press START/PAUSE to begin battling. Players with handicaps turned on will automatically use barrier items when their health drops below a certain level.



Low Handicap	Cursors for vehicle and handheld weapons is bigger than normal.
High Handicap	Cursors for vehicle and handheld weapons is bigger than normal and the weapons are more powerful than normal.

VIEWING VS. SCREENS

Vs. screens are divided by the number of combatants. The display will also vary depending on the rules selected.



Time Remaining

Depending on the rules selected, the time remaining may be displayed.

Shield

This shows the endurance of your vehicle. If you take damage while this is at zero, the vehicle will be destroyed and you'll continue on foot.

Life Gauge

This is the character's health. You will be knocked out if this reaches zero.

Boost Gauge

This shows how much boost energy you have remaining. This replenishes little by little over time.

Points

You get one point for every opponent you defeat. Once you reach the number of points necessary to win as determined in the rules setup, you are the victor.



Barriers

This shows how many barriers you're carrying. This number changes to show the number of bombs you have when you're in an Arwing.

Radar

This shows the location of your character, opponents, vehicles, etc.

RESULT SCREEN

Once a Vs. battle is finished, the Result screen will appear. Press **A** to display battle details and use **○** or **+** to view different statistics. Once all players have pressed START/PAUSE, the End menu will display.



END MENU

On the End menu you choose what you will do next. Use **○** or **+** to choose a menu item, then confirm with **A**. Only Player 1 can navigate the End menu.



Retry	Try the same battle under the same conditions again.
Select Player	Go to the Select-Player screen.
Select Stage	Go to the Select-Stage screen.
Exit	End Vs. mode and return to the Title screen.

PAUSE MENU

Pull up the Pause menu by pressing START/PAUSE. To continue the battle, press START/PAUSE again or select Continue and press **A**. The rest of the Pause menu is identical to the End menu. Only the player who brought up the Pause menu can navigate it.



OPTIONS

Come here to view user settings, play data, etc.
You can have data for up to 20 players.

USER SETTINGS

You can create and delete play data here and change Controller configurations (pg.18). Select the play data you want to manage with or and press to move to the Controller setup screen. Press to delete play data.

Once play data has been deleted it cannot be recovered, so be careful.



PLAY DATA

Come here to view player statistics. Use or to choose either Single or Vs. mode records and press to confirm.

Player Name	Date	Battle Stats	High Score
Story			3950 HP
Survival			0 HP
Mission 1			76.4 HP
Mission 2			300 HP
Mission 3			463 HP
Mission 4			637 HP
Mission 5			700 HP

Order	Player Name	Numbers
1	Nate	0h2m18s
2	FOX	0h0m0s
3	---	---
4	---	---
5	---	---
6	---	---
7	---	---

SOUND

This is where you can change the sound setup. Use or to choose either mono or stereo and press to confirm.

BONUS GAME

Once you've cleared certain conditions you will unlock the arcade classic Xevious.



How to Unlock:
Collect 10 silver badges.

A classic arcade shooter from Namco that debuted in 1982. Your goal is to pilot the Solvalou, shoot down baddies, and conquer all 16 areas.

XEVIOUS: ©1982,1984 NAMCO LTD..ALL RIGHT RESERVED.



PROGRESSIVE MODE

This game can be set to display a higher resolution image on TVs that support progressive mode (such as EDTV, HDTV). In order to use the progressive mode, you need a TV that can accept this type of input (see your TV operation manual), and a Nintendo GameCube Component Video Cable (available only through Nintendo, visit www.nintendo.com or call 1-800-255-3700). To activate the progressive mode, press and hold the B Button while the Nintendo GameCube logo is being displayed until the message "Do you want to display the game in progressive mode?" appears. Select YES to activate the mode. Please note that on some TVs, activating the progressive mode will set the format of the image to a wide screen (16:9) format.

• You cannot play the bonus game, Xevious, in progressive mode.

ACTIONS

Here are the different moves you can perform in *Star Fox: Assault*. The controls shown here are for the Single Stick configuration.

ROLLING

Pilot Landmaster Arwing



Press and tilt the Left or Right when in a Landmaster or Arwing to roll. Enemy attacks bounce off when you're rolling, so this is a good technique to use when multiple enemy attacks are closing in.



LOOPS & U-TURNS

Pilot Landmaster Arwing



When piloting an Arwing, tilt Up on to perform a loop and Down to do a U-turn. Both of these maneuvers are useful when you've got enemies or missiles closing in from behind. One note of caution: U-turns can only be used on all-range stages.



SWITCHING VEHICLES

Pilot Landmaster Arwing



Press to enter vehicles on all-range stages. Press again to get out of vehicles. There are some space-only stages that you cannot do this on.



SLIDE

Pilot Landmaster Arwing



Press and hold while moving with to slide to the side without changing your direction. This is a helpful move to use when you want to counterattack and avoid enemy fire at the same time.

CHARGE SHOTS

Pilot Landmaster Arwing

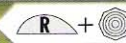


While in vehicles, you use charge shots by pressing to begin charging and pressing once more to shoot. While in Pilot mode, press and hold to charge and release to shoot. While in a vehicle, you can lock onto an enemy while charging. The only weapons that can charge are the blaster and grenade. **pg. 34**



CURSOR AIM

Pilot Landmaster Arwing

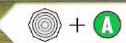


Press and hold and use to move only the cursor. This is very useful when trying to shoot down airborne enemies.



WING RIDING

Pilot Landmaster Arwing



On specific stages you can ride on allied Arwing wings and attack. Use to move the cursor and press to fire. If you press and hold , you can fire repeatedly. Use to switch weapons.



ADVICE

Here are some hints that may help you progress through the game. Cooperate with the entire Star Fox team and shoot for high scores.

COLLECT SPECIAL FLAGS

There are five special flags per stage. Defeat specific enemies or blast suspicious areas to reveal them.



HELP YOUR ALLIES

Your teammates will ask for your help from time to time during missions. As they are vital to your own success, try and help them as soon as you can. When you receive an SOS, watch your ally's vehicle endurance and health gauge, which will display at the bottom of the screen. If you can finish a mission without any of your teammates being forced to retire, you'll win an ally medal.



VEHICLE MANAGEMENT

It's really important to maximize all your forms of transportation on all-range modes. There are some places that Landmasters won't fit into, so you'll have to proceed on foot.



MACHINES

SPACE FIGHTER ARWING

The primary fighting vehicle of the Star Fox team. It has been refined and improved to have the strongest firepower in the Lylat system. It's equipped with a G-diffuser system that gives it high maneuverability.



ANTI-AIRCRAFT TANK LANDMASTER

This new and improved version of the Landmaster is lighter than before and maintains its all-terrain exploration wheels on a combat-ready tank chassis. Small plasma engines located on either side of the chassis give the Landmaster hovering capabilities for short durations of time.



MOTHERSHIP GREAT FOX

This dreadnaught-class battleship is the base for all Star Fox team operations. It's equipped with a monstrous plasma engine with which it can travel the system at warp speeds. It's also the hangar for the team's Arwings, Landmasters, and other equipment.



WEAPONS

Blaster



The weapon you start out with. It can shoot charge shots and has unlimited ammo.

Machine Gun



Shoot multiple times by merely holding down the fire button.

Sensor Bomb



Place these bombs with the fire button then wait for something to pass close by and set them off.

Sniper Rifle



Press **X** to use the scope and shoot at far-off enemies. Press **△** to zoom in more.

Grenade



Press and hold the fire button to trigger a grenade, and then release the fire button to throw it.

Homing Launcher



Lock onto enemies, then fire a missile that will chase after the enemy.

Gatling Gun



Press and hold the fire button to shoot continually. A more powerful version of the machine gun.

Plasma Cannon



A cannon you can wield while riding on the wing of someone's Arwing. It fires rapidly and has endless ammo.

Demon Launcher



This weapon is available only in Vs. mode. It fires enormously powerful homing rockets that kill with one hit.

ITEMS

Barrier



This item deflects all enemy attacks for a short period of time.

Vs. Mode Only



Stealth Suit

This Vs.-mode only weapon makes the user invisible for a short time.

First Aid Kits



These beneficial items restore the user's health. There are three types of first aid kits.

Silver Shield Ring



This sparkling ring restores a small portion of a vehicle's shield.

Gold Shield Ring



This glittering ring restores a medium portion of a vehicle's shield.

Green Power Upgrade



Grab one of these upgrades to increase your vehicle's firepower by one level.

Red Power Upgrade



Grab one of these upgrades to increase your vehicle's firepower by two levels.

Smart Bomb



Press **B** to launch one of these bombs and press again to detonate.

1-Up



Find one of these on a stage to receive an extra life.

A Arwing Item

L Landmaster Item

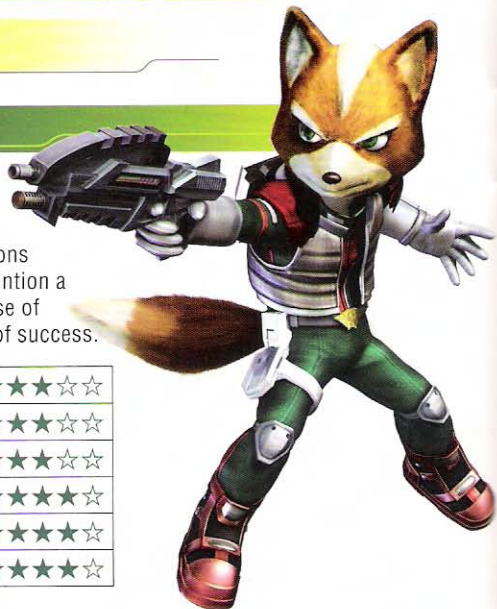
P Pilot Item

CHARACTERS

STAR FOX TEAM

FOX MCCLLOUD

Head of the commando-for-hire Star Fox team. He's responsible and extremely capable of assessing situations and giving orders, not to mention a fiery hero with a strong sense of responsibility and a record of success.



Health	★★★★☆
Speed	★★★★☆
Jump	★★★★☆
Arwing Skill	★★★★☆
Landmaster Skill	★★★★☆
Pilot Skill	★★★★☆

SLIPPY TOAD

Slippy's not much of a fighter, but he's an excellent mechanical engineer. He fulfills the role of team mascot and calms frayed nerves on the battlefield.



Health	★★★★☆
Speed	★★☆☆☆
Jump	★★★★☆
Arwing Skill	★★☆☆☆
Landmaster Skill	★★★★☆
Pilot Skill	★★★★☆

SPECIAL Charge speed is twice as fast as others.

FALCO LOMBARDI

The Star Fox team's ace pilot. Falco left the team briefly to work on his own but has since returned to the fold. He says he's in it for the money, but rumor has it that he considers the team his family. He's really a kind-hearted and uncomplicated fellow.

Health	★★★★☆
Speed	★★★★☆
Jump	★★★★☆
Arwing Skill	★★★★★
Landmaster Skill	★★☆☆☆
Pilot Skill	★★★★☆



KRYSTAL

The newest member of the team. Krystal's a mysterious young woman with extrasensory perception; she uses her talent to foresee danger and aid her teammates.



Health	★★☆☆☆
Speed	★★★★☆
Jump	★★★★☆
Arwing Skill	★★☆☆☆
Landmaster Skill	★★☆☆☆
Pilot Skill	★★★★☆

SPECIAL Receives 2 barriers when revived.

OTHER CHARACTERS

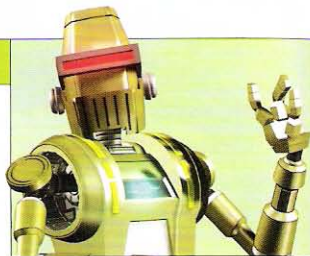


PEPPY HARE

The father figure of the Star Fox team. Peppy is a former pilot who retired because he was unable to conquer advanced age. He currently rides in the Great Fox where he issues advice and instructions to the team.

ROB

The observation and analysis robot assigned to the Great Fox. His main duties are to assist Peppy and transfer vehicles to Fox and company.



GENERAL PEPPER

Commander of the Corneria Defense Force. He was the commanding officer of Peppy and Fox's father when they were in the service. His leadership abilities and trustworthiness have made him a popular figure.

PIGMA DENGAR

A greedy miser who thinks of nothing save his own gain. His life has been one double cross after another. His overwhelming greed and unreliability got him kicked out of Star Wolf.



STAR WOLF



WOLF O'DONNELL

A scoundrel well-known throughout the Lylat system as the leader of the ruffian gang Star Wolf. He's crossed paths and laser fire with Fox on numerous occasions; each considers the other his eternal rival.

LEON POWALSKI

A member of Star Wolf who's a cold-blooded assassin. He has no morals or conscience and will perform any job with machinelike disinterest.



PANTHER CAROSO

Although he's new to the Star Wolf team, he's a top-class pilot. Panther's a flirt and incredibly indulgent with females. His conceit is so great that those around him are embarrassed. The red rose is his symbol.

ULTRA SPACE FIGHTER WOLFEN

The primary fighting vehicle of the Star Wolf team. Wolfens are equipped with more gravity-regulating Gravity Blades than Arwings and are conjectured to be at least equal to Arwings in functionality.



Important Legal Information

REV-D

Copying of any video game for any Nintendo system is illegal and is strictly prohibited by domestic and international intellectual property laws. "Back-up" or "archival" copies are not authorized and are not necessary to protect your software. Violators will be prosecuted.

This video game is not designed for use with any unauthorized copying device or any unlicensed accessory. Use of any such device will invalidate your Nintendo product warranty. Nintendo (and/or any Nintendo licensee or distributor) is not responsible for any damage or loss caused by the use of any such device. If use of such device causes your game to stop operating, disconnect the device carefully to avoid damage and resume normal game play. If your game ceases to operate and you have no device attached to it, please contact Nintendo Customer Service (see below).

The contents of this notice do not interfere with your statutory rights.

This booklet and other printed materials accompanying this game are protected by domestic and international intellectual property laws.

For further information or assistance, please contact:

Nintendo Consumer Service
www.nintendo.com
or call 1-800-255-3700
(U.S. and Canada)

Warranty & Service Information

REV-0

You may need only simple instructions to correct a problem with your product. Try our web site at www.nintendo.com or call our Consumer Assistance Hotline at 1-800-255-3700, rather than going to your retailer. Hours of operation are 6 a.m. to 7 p.m., Pacific Time, Monday - Sunday (times subject to change). If the problem cannot be solved with the troubleshooting information available on-line or over the telephone, you will be offered express factory service through Nintendo or referred to the nearest NINTENDO AUTHORIZED REPAIR CENTER. Please do not send any products to Nintendo without contacting us first.

HARDWARE WARRANTY

Nintendo of America Inc. ("Nintendo") warrants to the original purchaser that the hardware product shall be free from defects in material and workmanship for twelve (12) months from the date of purchase. If a defect covered by this warranty occurs during this warranty period, Nintendo or a NINTENDO AUTHORIZED REPAIR CENTER will repair the defective hardware product or component, free of charge. The original purchaser is entitled to this warranty only if the date of purchase is registered at point of sale or the consumer can demonstrate, to Nintendo's satisfaction, that the product was purchased within the last 12 months.

GAME & ACCESSORY WARRANTY

Nintendo warrants to the original purchaser that the product (games and accessories) shall be free from defects in material and workmanship for a period of three (3) months from the date of purchase. If a defect covered by this warranty occurs during this three (3) month warranty period, Nintendo or a NINTENDO AUTHORIZED REPAIR CENTER will repair the defective product, free of charge.

SERVICE AFTER EXPIRATION OF WARRANTY

Please try our web site at www.nintendo.com or call the Consumer Assistance Hotline at 1-800-255-3700 for troubleshooting information and/or referral to the nearest NINTENDO AUTHORIZED REPAIR CENTER. In some instances, it may be necessary for you to ship the complete product, FREIGHT PREPAID AND INSURED FOR LOSS OR DAMAGE, to the nearest service location. Please do not send any products to Nintendo without contacting us first.

WARRANTY LIMITATIONS

THIS WARRANTY SHALL NOT APPLY IF THIS PRODUCT: (a) IS USED WITH PRODUCTS NOT SOLD OR LICENSED BY NINTENDO (INCLUDING, BUT NOT LIMITED TO, NON-LICENSED GAME ENHANCEMENT AND COPIER DEVICES, ADAPTERS, AND POWER SUPPLIES); (b) IS USED FOR COMMERCIAL PURPOSES (INCLUDING RENTAL); (c) IS MODIFIED OR TAMPERED WITH; (d) IS DAMAGED BY NEGLIGENCE, ACCIDENT, UNREASONABLE USE, OR BY OTHER CAUSES UNRELATED TO DEFECTIVE MATERIALS OR WORKMANSHIP; OR (e) HAS HAD THE SERIAL NUMBER ALTERED, DEFACED OR REMOVED.

ANY APPLICABLE IMPLIED WARRANTIES, INCLUDING WARRANTIES OF MERCHANTABILITY AND FITNESS FOR A PARTICULAR PURPOSE, ARE HEREBY LIMITED IN DURATION TO THE WARRANTY PERIODS DESCRIBED ABOVE (12 MONTHS OR 3 MONTHS, AS APPLICABLE). IN NO EVENT SHALL NINTENDO BE LIABLE FOR CONSEQUENTIAL OR INCIDENTAL DAMAGES RESULTING FROM THE BREACH OF ANY IMPLIED OR EXPRESS WARRANTIES. SOME STATES DO NOT ALLOW LIMITATIONS ON HOW LONG AN IMPLIED WARRANTY LASTS OR EXCLUSION OF CONSEQUENTIAL OR INCIDENTAL DAMAGES, SO THE ABOVE LIMITATIONS MAY NOT APPLY TO YOU.

This warranty gives you specific legal rights. You may also have other rights which vary from state to state or province to province.

Nintendo's address is: Nintendo of America Inc., P.O. Box 957, Redmond, WA 98073-0957 U.S.A.

This warranty is only valid in the United States and Canada.