

COMING SOON ONLY FOR



# BOMBERMAN JETTERS

The Hige Hige Bandits are going to crash their artificial comet, Dark Star, into Planet Bomber. As Bomberman, you must destroy the four engines that propel Dark Star before it is too late!

SEQUEL TO THE SMASH HIT BOMBERMAN GENERATION!

NEW MULTIPLAYER BATTLES!

ALL NEW CHARABOMS WITH SPECIAL ABILITIES THAT GROW STRONGER AS THEY EVOLVE!



EmuMovies

# BLOWOUT



INSTRUCTION BOOKLET



**PLEASE CAREFULLY READ THE SEPARATE HEALTH AND SAFETY PRECAUTIONS BOOKLET INCLUDED WITH THIS PRODUCT BEFORE USING YOUR NINTENDO® HARDWARE SYSTEM, GAME DISC OR ACCESSORY. THIS BOOKLET CONTAINS IMPORTANT HEALTH AND SAFETY INFORMATION.**

**IMPORTANT SAFETY INFORMATION: READ THE FOLLOWING WARNINGS BEFORE YOU OR YOUR CHILD PLAY VIDEO GAMES**

**⚠ WARNING - Seizures**

- Some people (about 1 in 4000) may have seizures or blackouts triggered by light flashes or patterns, such as while watching TV or playing video games, even if they have never had a seizure before.
- Anyone who has had a seizure, loss of awareness, or other symptom linked to an epileptic condition should consult a doctor before playing a video game.
- Parents should watch when their children play video games. Stop playing and consult a doctor if you or your child have any of the following symptoms:

Convulsions	Eye or muscle twitching	Loss of awareness
Altered vision	Involuntary movements	Disorientation

To reduce the likelihood of a seizure when playing video games:

1. Sit or stand as far from the screen as possible.
2. Play video games on the smallest available television screen.
3. Do not play if you are tired or need sleep.
4. Play in a well-lit room.
5. Take a 10 to 15 minute break every hour.

**⚠ WARNING - Repetitive Motion Injuries and Eyestrain**

Playing video games can make your muscles, joints, skin or eyes hurt after a few hours. Follow these instructions to avoid problems such as tendonitis, carpal tunnel syndrome, skin irritation or eyestrain:

- Avoid excessive play. It is recommended that parents monitor their children for appropriate play.
  - Take a 10 to 15 minute break every hour, even if you don't think you need it.
  - If your hands, wrists, arms or eyes become tired or sore while playing, stop and rest them for several hours before playing again.
- If you continue to have sore hands, wrists, arms or eyes during or after play, stop playing and see a doctor.

**⚠ WARNING - Electric Shock**

To avoid electric shock when you use this system:

- Do not use the Nintendo GameCube during a lightning storm. There may be a risk of electric shock from lightning.
- Use only the AC adapter that comes with your system.
- Do not use the AC adapter if it has damaged, split or broken cords or wires.
- Make sure that the AC adapter cord is fully inserted into the wall outlet or extension cord.
- Always carefully disconnect all plugs by pulling on the plug and not on the cord. Make sure the Nintendo GameCube power switch is turned OFF before removing the AC adapter cord from an outlet.

**⚠ CAUTION - Motion Sickness**

Playing video games can cause motion sickness. If you or your child feel dizzy or nauseous when playing video games with this system, stop playing and rest. Do not drive or engage in other demanding activity until you feel better.

**⚠ CAUTION - Laser Device**

The Nintendo GameCube is a Class I laser product. Do not attempt to disassemble the Nintendo GameCube. Refer servicing to qualified personnel only. Caution - Use of controls or adjustments or procedures other than those specified herein may result in hazardous radiation exposure.

**CONTROLLER NEUTRAL POSITION RESET**

If the L or R Buttons are pressed or the Control Stick or C Stick are moved out of neutral position when the power is turned ON, those positions will be set as the neutral position, causing incorrect game control during game play.

To reset the controller, release all buttons and sticks to allow them to return to the correct neutral position, then hold down the X, Y and START/PAUSE Buttons simultaneously for 3 seconds.



*This official seal is your assurance that Nintendo has reviewed this product and that it has met our standards for excellence in workmanship, reliability and entertainment value. Always look for this seal when buying games and accessories to ensure complete compatibility with your Nintendo product.*

All Nintendo products are licensed by sale for use only with other authorized products bearing the Official Nintendo Seal of Quality.®



1 Player

**THIS GAME SUPPORTS GAME PLAY WITH ONE PLAYER AND ONE CONTROLLER.**



Memory Card

**THIS GAME REQUIRES A MEMORY CARD FOR SAVING GAME PROGRESS, SETTINGS OR STATISTICS.**

**Important Legal Information**

*Copying of any video game for any Nintendo system is illegal and is strictly prohibited by domestic and international intellectual property laws. "Back-up" or "archival" copies are not authorized and are not necessary to protect your software. Violators will be prosecuted.*

*This video game is not designed for use with any unauthorized copying device or any unlicensed accessory. Use of any such device will invalidate your Nintendo product warranty. Nintendo (and/or any Nintendo licensee or distributor) is not responsible for any damage or loss caused by the use of any such device. If use of such device causes your game to stop operating, disconnect the device carefully to avoid damage and resume normal game play. If your game ceases to operate and you have no device attached to it, please contact the game publisher's "Technical Support" or "Customer Service" department.*

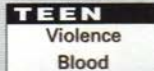
*The contents of this notice do not interfere with your statutory rights.*

*This booklet and other printed materials accompanying this game are protected by domestic and international intellectual property laws.*

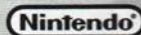
Rev-D (L)



THIS PRODUCT HAS BEEN RATED BY THE ENTERTAINMENT SOFTWARE RATING BOARD. FOR INFORMATION ABOUT THE ESRB RATING, OR TO COMMENT ABOUT THE APPROPRIATENESS OF THE RATING, PLEASE CONTACT THE ESRB AT 1-800-771-3772, OR VISIT WWW.ESRB.ORG.



LICENSED BY



NINTENDO, NINTENDO GAMECUBE AND THE OFFICIAL SEAL ARE TRADEMARKS OF NINTENDO.  
© 2001 NINTENDO. ALL RIGHTS RESERVED.

## TABLE OF CONTENTS

<b>CONTROLS</b>	4
<b>JUMP INTO HELL</b>	5
<b>STARTING THE GAME</b>	6
<b>THE MAIN MENU</b>	7
Next Mission / Level Select / Weapon Status / Options / Save	
<b>THE GAME SCREEN</b>	9
<b>THE STATION MAP</b>	10
Network Nodes	
<b>PLAYING THE GAME</b>	11
Using Weapons / The Jet Pack / Elevators / Dropship Data / Types of Doors / Armed Defensive Systems / Secret Areas	
<b>MODIFIERS</b>	14
<b>TELEPORTERS</b>	15
<b>THE SCORE SCREEN</b>	15
<b>PAUSE MENU</b>	16
<b>SAVING AND LOADING GAME DATA</b>	16
Save Game / Load a Saved Game / Quick Saves and Quick Loads	
<b>THE LEVELS</b>	17
Airlock / Cargo Bay / Science Lab / Crew Quarters / Command Center	
<b>ENEMY TARGETS</b>	18
Aliens / Mutants	
<b>THE WEAPONS</b>	19
<b>GAME PLAY TIPS</b>	21
<b>CREDITS</b>	22

## CONTROLS



## CONTROLS

**NOTE:** These are the default controls (Scheme 1). You can select the other Nintendo GameCube Controller scheme from the Options menu.



## JUMP INTO HELL

The battle platform *Honour Guard* is now under the command of homicidal clones and crawls with a menagerie of genetic horrors. Marshall "Dutch" Cane wants to join the party.

Cane is a member of the Jump Posse, a law enforcement organization that regulates battle platforms crewed by M1-2 human clones. Posse members are heavily armed and can respond quickly in super fast jump ships.

The Properties are commercial interests existing on the very fringe of galactic human influence. The battle platforms guard these interests. It is here that the human clone first demonstrated profitability. The *Honour Guard* crew's DNA originated from the original combat crew. Four generations of Honour Guard clones have served flawlessly, fending off invasion by vandals or hijackers attacking the Properties.

MI-2 types are the ultimate in worker bio-systems. Able to self-replicate when needed, they promise the ultimate dream in human resource management. Genetic engineering insures that emotion and personal ambition are filtered out of the final product. These

humans without souls have transcended legal concerns about human rights. They work, attack, defend or die without shedding a tear.

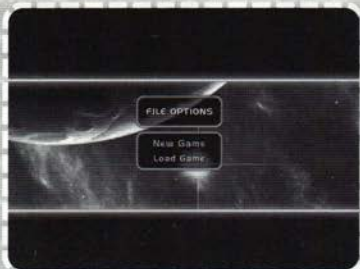


But something went wrong. While defending an incursion on a fuel outpost by alien Xenos invaders, a gunner clone named C.F. Stephens (ver. 4) was exposed to a genome virus carried by one

of the attackers. The clone's first reaction was to become self-aware and like his original, voraciously ambitious. Stephens quickly learned how to clone himself with the intent of creating a personal army. The virus spread with each replication and DNA can take only so much abuse. The Stephens clones, already tortured and psychotic, exploded into monstrous life forms. They slaughtered every other clone on the ship. Now C.F. Stevens is in command of Honour Guard and his hideous offspring are about to populate the solar system. They'll have to go through "Dutch" Cane first.

## STARTING THE GAME

1. On the Title Screen, press **START**.
2. Press the **CONTROL PAD Up/Down** to highlight **NEW GAME** and press the **X BUTTON** to display the Main Menu.
3. Select **NEXT MISSION** from the Main Menu and press the **A BUTTON** to begin the game.



## THE MAIN MENU

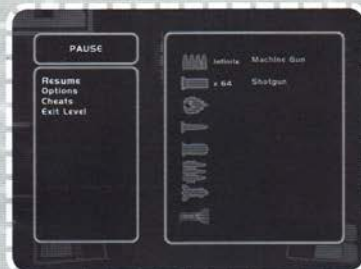
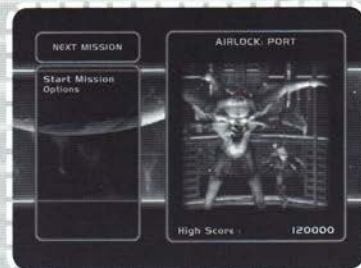
### NEXT MISSION

Begin the next mission based on your progress through the game.



### LEVEL SELECT

Select a level you have already completed. Locked missions are those you have not yet completed.



### WEAPON STATUS

View your weapon, its level and how much ammunition you have.

## OPTIONS

Make Controller, sound and display adjustments here.

### AIM SPEED

Set how fast the gun sight responds when you take aim.

### RUMBLE FEATURE

Toggle Controller Rumble Feature **ON** or **OFF**. When set to **ON** the Controller will Rumble in response to certain game events.

### EFFECTS VOLUME

Set special effects volume.

### MUSIC VOLUME

Set music volume.

### BRIGHTNESS

Adjust the amount of ambient light.

### CONTROLLER SCHEMES

View and select Controller Scheme 2 (Default) or 1.

### CHEAT CODES

Use the **CONTROL PAD** to enter four words that create a phrase that unlocks a cheat for the game.

- Press the **CONTROL PAD** Up/Down to scroll through the word options.
- Press the **CONTROL PAD** Right to select the word and press **CONTROL PAD** Left to delete it.

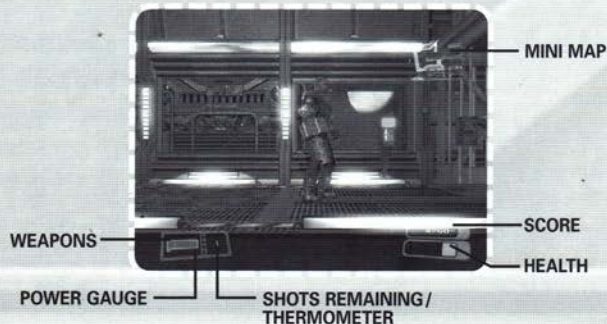
After selecting the fourth word, press the **A** **BUTTON** to see if your phrase is valid and what cheat, if any, you have unlocked.

### SAVE

Save your progress through the game. You can save up to six games to a Nintendo GameCube Memory Card. **BLOWOUT** only supports memory cards inserted into Slot A. You will also be prompted to save game progress upon completion of a level. However, if you pass through a laser door your game will start again from that if you are killed.



## THE GAME SCREEN



### MINI MAP

View Dutch's position in the ship. Press the **B** **BUTTON** to open the Station Map for a very detailed view. See "THE STATION MAP" on the next page.

### WEAPONS

Displays the weapon Dutch is currently holding. Cycle to the next or previous weapon by pressing the **X** **BUTTON** and **Y** **BUTTON**. Dutch always carries the machine gun but must find additional weapons and ammo throughout Honour Guard. See "The Weapons" on page 19.

### SHOTS REMAINING/THERMOMETER

Shows shots/fuel remaining for the selected weapon. When using the machine gun, the thermometer appears here to monitor muzzle temperature. When the gun reaches max temperature it quits firing. Wait for the gun to cool off before firing.

### WEAPON POWER GAUGE

Shows the power level of weapons from 1 to a maximum of 4. Find the **WEAPON POWER MODIFIER** to raise weapon power.

### SCORE

This is your score for the current level.

### HEALTH

Find Health Paks to keep this full or increase Dutch's health capacity.

## THE STATION MAP

Use the Station Map to navigate through *Honour Guard*. Press the **B BUTTON** to display the Station Map. Press the **CONTROL STICK** to scan the map and the **C STICK** [Up/Down] to zoom the map in and out.

- View the Map Legend to see icons for each map feature.
- If you see a passageway on the map that you can't see from where Dutch is standing, maybe you can blast your way through.
- Mission objectives and their location are also displayed on the **STATION MAP**. View the objective at the bottom of the screen and its corresponding number on the **STATION MAP**.



## NETWORK NODES

Reach Network Nodes in *Honour Guard* and press the **A BUTTON** to download additional data which will be displayed on the Station Map.



## PLAYING THE GAME

Battle through the passageways of *Honour Guard* killing the Stephens clones and alien monstrosities that control the ship.

## USING WEAPONS

Like every other Jump Posse member, Dutch wears a universal weapon mount on his forearm that allows for instant weapon changes. A quick press of the **X BUTTON** or **Y BUTTON** instantly cycles his available weapons into the mount and the selected weapon is highlighted on the weapon display. Press the **R BUTTON** to fire the weapon while aiming or changing direction with the **CONTROL STICK**.

- Find additional weapons throughout *Honour Guard*.
- You must find ammo, fuel cells or battery packs to reload weapons.

See "THE WEAPONS" on page 19.

## THE JET PACK

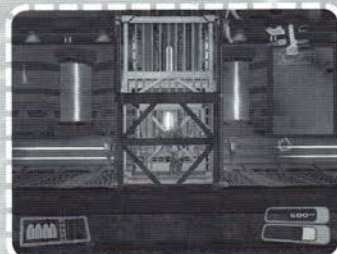
Press the **L BUTTON** to get a rocket pack boost. Steer while airborne by pressing the **CONTROL STICK**. Use the rocket pack to jump up through shafts, over shafts to avoid falling in or to hover. You can fire weapons while Dutch hovers.



## ELEVATORS

Use elevators to move between decks on M-12.

- To call an elevator that is on a different floor, walk up to an elevator call panel and press the **A BUTTON**.
- To ride an elevator, press the **CONTROL PAD** Up/Down



## DROPSHIP DATA

Your progress through *Honour Guard* is being monitored by the dropship crew and at certain times during your mission, you will receive dropship voice communication to give you important data.

## TYPES OF DOORS

### COLOR-CODED DOORS AND KEYS

These security doors require keys that you must find. When Dutch carries the correct key, doors open automatically when approached.



### ONE-WAY DOORS

One-way doors are locked on one side. If you cannot enter, you have to find a route to the other side of the door to unlock it. Once unlocked, the door stays open and you can pass in either direction.



### BLAST DOORS

Blast Door access is controlled from a remote location. You have to find the blast door control panel for a specific door. Press the **A BUTTON** to activate the panel.



### BULKHEAD DOORS

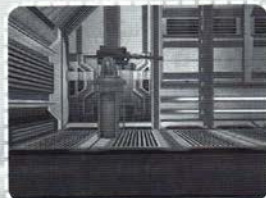
These doors divide the port and starboard side of the station. You exit through one of these when moving to the next level in the ship.

## ARMED DEFENSIVE SYSTEMS

In addition to the biological threat, be prepared to battle these station defense systems.

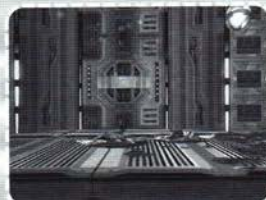
### SENTRY GUN

Arranged throughout *Honour Guard's* passageways, these wall or floor mounted auto-tracking systems detect movement and open fire with machine guns.



### SENTRY DRONES

Sentry drones generally hover in a small area waiting to attack with a nasty electric shock. Disable them temporarily with any weapon.



### LASER BEAMS AND BLADES

Navigating around these requires timing. Disable them temporarily with any weapon.



### PROXIMITY MINES

A variation on the old Bouncing Betty, this anti-personnel mine detects motion, deploys to approximately chest level and detonates.





## SECRET AREAS

Find well-hidden secret areas to pick up vital weaponry, ammo or health paks. Look at details around you and the **STATION MAP** to help find hidden areas on *Honour Guard*.

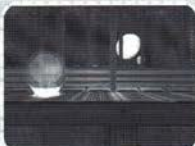
## MODIFIERS

Dutch's suit and weapons make up a highly evolved combat system providing offensive and defensive features. Modifiers enhance the system by adapting the suit and weapons to specialized or more powerful combat roles. Modifiers activate upon pickup and function until depleted.



## WEAPON POWER

Increase the damage of all weapons to a level of 4. It also increases the maximum amount of ammo for each weapon.



## HEALTH

Replenishes health to a maximum of 100.



## MAX HEALTH INCREASED

Increases maximum health potential from 100 to 200.



## SPEED

This metabolic tweak speeds up every action Dutch takes for a duration of 15 seconds. An enemy experiences that same time period as about three seconds.



## ABSORB

Will heal Dutch 50% of the attack power inflicted on him.

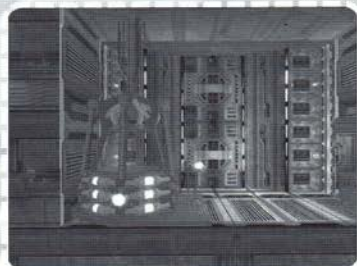
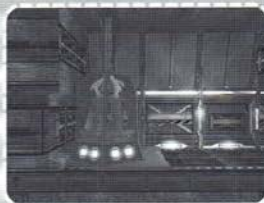


## BOUNCE

Randomly re-directs attack energy for 100% effective damage protection.

## TELEPORTERS

Teleporters move Dutch from one area of *Honour Guard* to the next and mark the completion of the mission for one section of the ship. Reaching a teleporter involves fighting some of the ship's deadliest creatures. However, the teleporters found in the middle of a level will replenish Dutch's health to maximum.



## THE SCORE SCREEN

When you complete a level the Score Screen displays your total points earned including any bonus points received for exceptional performance.

Stats include:

- **ENEMY BONUS:** Points earned for enemy kills and shooting accuracy (measured by the damage each shot inflicted on monsters or destroyable objects) raises your enemy bonus.
- **ITEM BONUS:** Points earned picking up items throughout the level.
- **TIME BONUS:** Points earned based on elapsed time to complete level.



## PAUSE MENU



### RESUME

Continue play.

### MAP

View the Station Map. See "THE STATION MAP" on page 10.

### OPTIONS

See "OPTIONS" on page 8.

### EXIT LEVEL

Return to the MAIN MENU.

## LOADING A SAVED GAME

Continue playing a saved game. On the TITLE SCREEN select LOAD GAME. Select one of your saved games.

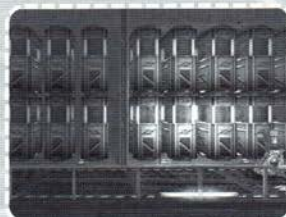
## THE LEVELS

The player can select one of the ten levels that are in the game if they have already played them or they can proceed to the next level.

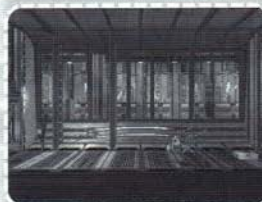
### AIRLOCK



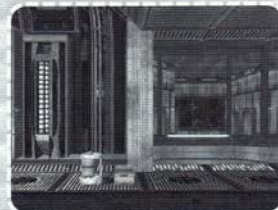
### CARGO BAY



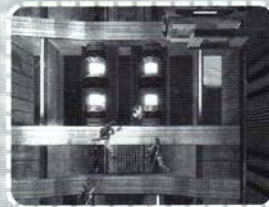
### SCIENCE LAB



### CREW QUARTERS



### COMMAND CENTER



## ENEMY TARGETS

DNA gone wild has created a huge variety of deadly bugs and alien mutants.

### BUGS

ROACHES



PIRANHA



PARASITE



SWARM



### MUTANTS

These genetic nightmares can contain human, canine and alien bug DNA. Some may show intelligence and all are fiercely aggressive.

DOG MUTANT



SPIDER DOG



BEAST MUTANT



CRAWLER MUTANT



## THE WEAPONS

Jump Posse weaponry ranges from basic to bizarre, and all weapons are lethal. To pick up a weapon or ammo, just walk up to it.

### MACHINE GUN



This is the basic weapon and a real life saver because it never runs out of 9mm slugs. However, it can overheat and will stop firing until it cools off. Fire quick bursts to keep the temperature down.

### ROTARY SHOTGUN



This Jump Posse version of a street sweeper is nicknamed a "B-B Gun." It sprays 150 steel balls in a wide swath of pulverizing destruction – great for clearing bugs from passageways.

### FLAMETHROWER



Hose 'em down until they glow like a charcoal briquette. The 20mm slow-burst incendiary canister bathes the enemy in a shower of searing plasma flames.

### MINIGUN

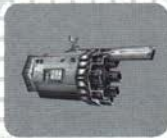


Six barrels spin out 1000 rounds per minute of hand-held mutilation. The muzzle velocity of the 7.62 rounds is jacked up to six times normal for pulverizing impact on hardened bunkers.



### FLECHETTE NAIL GUN

Hammer anything with this belt-driven weapon that fires six-inch hardened steel nails at three rounds per second.



### GRENADE LAUNCHER

This 40mm high explosive grenade sends shrapnel ripping through the air at about 1500 meters per second. Everything in the blast zone gets shredded.



### MISSILE LAUNCHER

This shoulder launched mini-missile delivers a devastating high-explosive blast to take out multiple targets.



### SONIC IMPULSE CANNON

The impulse cannon is the most powerful Jump Posse weapon Dutch carries. It emits a coned concussive blast that shatters just about anything. Press and hold the fire button to charge and release to fire the weapon.

## GAME PLAY TIPS

- Explore everywhere! You never know where a new weapon might be hiding.
- Watch your Temperature! The machine gun will overheat and stop functioning correctly if you fire continuously. Use short bursts to keep it cool.
- There's no ammo shortage on the Honour Guard, so fire away with all munitions.
- Watch and learn. Each enemy has certain behaviors. Pay careful attention and you may be able to avoid their attacks.
- Your Jetpack is not just for jumping. Use your jetpack to hover, giving you 2 levels to fight on.
- Your gun can aim in any direction. Use this to your advantage.
- Bigger monstrosities lurk around the ship. Keep your health up so you'll have a chance to survive those long fights.
- Check your map! The Honour Guard is a big place and you can easily get lost. Use your map to help guide you.
- Listen to your radio. Red will give you good advice. Listen to him and you may have a chance.
- Destroy those containers! Ammo dumps can be found inside barrels and crates, helping you to fend off the enemy.



**1-900-285-TIPS**

1-900-285-8477

(\$1.99 per minute.) Must be 18 years or older, or have a parent's permission to call. Touch tone phones only.

**TERMINAL REALITY**  
**EXECUTIVE PRODUCER**  
Brett Russell

**PRODUCER**  
Brendan Goss

**ASSOCIATE PRODUCER**  
Paul Eckstein

**LEAD PROGRAMMER**  
Craig Reichard

**PRESIDENT / ENGINE  
PROGRAMMER**  
Mark Randel

**PROGRAMMERS**  
Omar Aziz  
Jennifer Lear  
Nathan Peugh  
Daniel Young

**GAME DESIGN**  
Drew Haworth  
Jeff Mills

**ART LEAD**  
David Haber

**ARTISTS**  
Chuck Carson  
Mark Leon  
Jared Morton  
Travelle McEntyre

**SENIOR LEVEL DESIGNER**  
Eric Schatz

**SCRIPTING**  
David Glasscock  
Jeff Mills  
Jeff Morales  
Cliff Nordman  
Brett Russell

**MUSIC AND SOUND  
DIRECTOR**  
Kyle Richards

**MUSIC COMPOSITION**  
Sean Kolton

**LEAD SOUND DESIGN**  
Matt Persall

**LEAD DIALOGUE WRITER**  
Mark Orvik

**VOICE TALENT**  
Patrick Amos  
Parisa Fakhri  
Christopher Robin Sabat

**ADDITIONAL  
PROGRAMMING AND  
EDITOR CREATION**  
Fletcher Dunn

**ADDITIONAL ART**  
Glen Gamble  
Jason Sussman  
Chad Walker  
Tomas Gonzalez

**VP**  
Brett Evan Russell

**PRODUCT MANAGER**  
Paul Eckstein

**QUALITY ASSURANCE  
SUPERVISOR**  
Tatum Tippet

**TESTING LEAD & TRC  
MANAGER**  
Patrick Goss

**INTERNAL TESTERS**  
Josh Cook  
Greg Schiestl

**CHARACTER AND DESIGN  
AND CG MOVIE**  
Atgames

**OTHER CONTRIBUTORS**  
Javier Ojeda  
Marvin Douma  
Brent Slocum  
Peter DeFrank

## **MAJESCO**

**CREATIVE DIRECTOR**  
Joseph Sutton

**VP OF DEVELOPMENT**  
David Elmekies

**PRODUCT DEVELOPMENT  
MANAGER**  
Catherine Biebelberg

**VP MARKETING**  
Ken Gold

**PRODUCT MANAGER**  
Roozbeh Ashtyani

**ASSOCIATE PRODUCER**  
Sean Scott

**CREATIVE SERVICES**  
Leslie Mills  
Tavio Castrillo  
Chris Moryl

**PACKAGE ART**  
Frank Lam

**QA MANAGER**  
John Arvay Jr.

**LEAD TESTER**  
Robert Cooper

**TESTERS**  
Russell Mock  
Eric Jezercak  
Kevin Kurdes  
John D'Angelo  
Nick Verhoski  
Anthony Mariquit  
Robert Boone  
Andrew Bado  
Steve Macko  
Scott Trager  
Randall Green  
Lucio Barbarino

**MANUAL**  
Hanshaw Ink & Image

**SPECIAL THANKS**  
Morris Sutton  
Jesse Sutton  
Joseph Sutton  
Adam Sutton  
Raymond Holmes  
Maricor Gardner  
Kim Kephart  
Jeff Morales  
John O'keefe  
Marilyn Webb  
Made in Lewisville, TX

Any resemblance to persons fictional or real who are living, dead, or undead is purely coincidental.

Copyright © 2003 Majesco Sales, Inc.  
All rights reserved. Copyright © 2003  
Terminal Reality Inc. All rights reserved.

NOTES

NOTES

NOTES

NOTES

## WARRANTY INFORMATION

### MAJESCO SALES, INC. LIMITED WARRANTY

Majesco Sales, Inc. warrants to the original purchaser that this product is free from defects in materials and workmanship for a period of 90 days from the date of purchase. Majesco Sales, Inc. is not liable for any losses or damages of any kind resulting from the use of this product. If the product is found to be defective within the 90-day warranty period, Majesco Sales, Inc. agrees to repair or replace the product at its option free of charge. This warranty shall not be applicable and shall be void if the defect in the product is a result of abuse, unreasonable use, mistreatment or neglect.

### LIMITATIONS

This warranty is in place of all other warranties and no other representations or claims of any nature shall be binding on or obligate Majesco Sales, Inc. Any implied warranties applicable to this product, including warranties of merchantability and fitness for a particular purpose, are limited to the 90-day period described above. In no event will Majesco Sales, Inc. be liable for any special, incidental or consequential damages resulting from possession, use or malfunction of this Majesco Sales, Inc. software product.

Some states do not allow limitations as to how long an implied warranty lasts and/or exclusions or limitations of incidental or consequential damages so the above limitations and/or exclusions of liability may not apply to you. This warranty gives you specific rights, and you may also have other rights that vary from state to state.

### RETURNS WITHIN THE 90-DAY WARRANTY PERIOD

Please return the product along with a copy of the original sales receipt, showing the date of purchase, a brief description of the difficulty you are experiencing, and your name, address and phone number to: Majesco Sales, Inc., 160 Raritan Center Parkway, Edison, NJ 08837. If the product was damaged through misuse or accident, this 90-day warranty is rendered void. We strongly recommend that you send your product using a traceable delivery method. Majesco Sales, Inc. is not responsible for products not in its possession.

### MAJESCO SALES, INC. CUSTOMER WARRANTY NOTICE

Majesco Sales, Inc. reserves the right to make improvements in the product described in this manual at any time and without notice. This manual and the software described in this manual are copyrighted. All Rights Reserved. No part of this manual or the described software may be copied, reproduced, translated, or reduced to any electronic medium or machine-readable form without the prior written consent of Majesco Sales, Inc.

### TECHNICAL SUPPORT

If you need technical assistance with this product, call us toll-free at (800) 826-0015 Monday through Friday between 9:00 A.M. and 5:00 P.M. Eastern Standard Time. No hints or codes are available from this line. For hints and codes call us at (900) 285-8477 Eastern Standard Time. Be advised that there is a \$1.99 per minute charge.

### HOW TO REACH US ONLINE:

For technical and game support visit us at <http://www.majescogames.com> and click on the "Support" link.