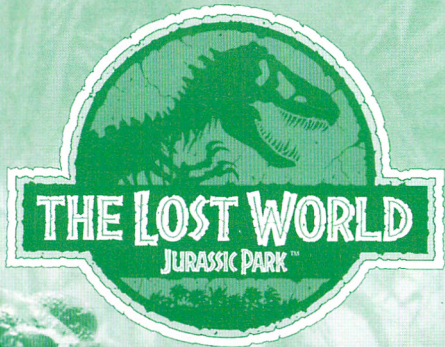


TIGER®



MODEL 71-784
7170401|WTIE-01

game.com™

CONTENTS

I	n	t	r	o	d	u	c	t	i	o	n	/	O	b	j	e	c	t		3
P	l	a	y	i	n	g	t	h	e	G	a	m	e		4	-	6			
G	a	m	e	T	r	a	i	l		7	-	8								
N	e	s	t	A	r	e	a		9	-	11									
O	p	t	i	o	n	s		12												
P	a	s	s	w	o	r	d		13											
D	e	f	e	c	t	i	v	e	C	a	r	t	r	i	d	e	s		14	
W	a	r	r	a	n	t	y		14	-	15									

INTRODUCTION / OBJECT

Found. The secret island that was used to supply Jurassic Park with its dinosaurs has finally been found. Site B, as the island is known, was once the “factory” that housed the genetic engineering wing of InGen, the company backing that most unique project.

When the original Jurassic Park failed and was overrun by its inhabitants, Site B was quickly abandoned. Those that fled gave no thought to the welfare of their creations. The scientists felt that without the chemicals they had been supplying, all of the dinosaurs would eventually die. This was not the case, however. The creatures not only survived, but began to thrive in this tropical home.

Sarah Harding, anthropologist, has led a small group of conservationists to Site B in hopes of studying the dinosaurs in their natural habitat. A second team, funded by InGen, has also landed. This team is intent on hunting the dinosaurs and returning them to the mainland, which would be disastrous. The lead hunter is the famous Roland Tembo.

You may play the game as either Harding or Tembo. Each of the characters must navigate the various Game Trails to individual dinosaurs’ Nest Areas. Tembo wants to collect the dinosaur eggs in the nest and return them to the mainland. Harding wants to retrieve the dino eggs and keep them out of Tembo’s hands. In either case, these are dangerous missions. Game Trail dinosaurs will attempt to destroy your vehicle. Nest Area dinosaurs, some babies, some full grown, will attack.

PLAYING THE GAME

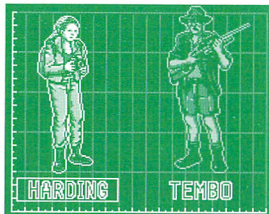
Make sure your game.com system is OFF. Insert the LOST WORLD cartridge into cartridge slot 1. Turn on game.com. Touch CARTRIDGE on the Main Menu Screen. After a brief animation, you'll find yourself at the main Lost World screen. Here you'll have three choices: START, OPTIONS and PASSWORD.

On the main Lost World screen, touch START. This will begin the game. The other choices will be explained later.



TOUCH START TO DISCOVER THE LOST WORLD

Now you must choose to play as either Harding or Tembo. Touch, or press the D-pad in the direction of, the character you wish to play. Touch the area again (or press the "A" button) to lock in your choice.



YOU MAY PLAY AS EITHER HARDING OR TEMBO!

Next you will be taken to the Map Screen. Here you will see all the areas of Site B. Each area represents a different dinosaur habitat. There are six areas that must be played through in order. Your goal is to collect eggs from five of the areas and then escape off of the island through the sixth. Once you have been shown what area of the island you will be entering, you will be allowed to choose what vehicle is best suited to that dinosaur and terrain.

HERE YOU WILL BE SHOWN WHAT AREA YOU WILL BE ENTERING.



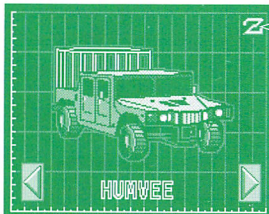
Some vehicles are swift, but may not take much damage. Some are slow and heavy, but will stand up to the punishment of the dinosaurs a lot better. Harding and Tembo share some of the same vehicles, but some are different. You may want to experiment with the various vehicles on the Game Trails. Some are more suited to certain types of dinosaur attacks than others.

You may select from the following:

HARDING'S VEHICLES: -RV MOBILE LAB -RV 3	TEMBO'S VEHICLES: -HUMVEE CARGO CARRIER -HUMVEE SNAGGER	SHARED VEHICLES: -HUMVEE -MOTORCYCLE
---	--	---

When you begin the game, you will have two of each vehicle at your disposal. Once destroyed, however, a vehicle cannot be replaced. The number in the top right corner of the screen will let you know how many of that particular type of vehicle you have left. When you have no vehicles left of any type, you cannot go on, and the game will be over. Drive carefully!

When you have decided which vehicle to use, press the "A" button to lock in your choice.



THIS INDICATES THE NUMBER YOU HAVE LEFT OF THAT TYPE OF VEHICLE.

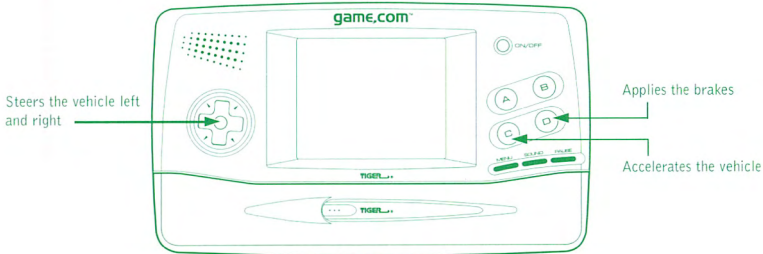
PRESS LEFT OR RIGHT ON THE DIRECTIONAL PAD TO CYCLE THROUGH YOUR CHOICES.

GAME TRAIL

Once your selection is made you will enter the Game Trail. Each Game Trail is specific to a certain type of dinosaur; however, sometimes other types of dinosaurs will join the panic. Be prepared for anything!

Use the Directional Pad to move left and right. Try to avoid the dinosaurs that are stampeding, and steer clear of the road hazards. Each time a dinosaur hits you or you hit a road hazard, the vehicle becomes damaged. Once the vehicle's damage bar is depleted, the vehicle is lost and you must try the Trail again with another one.

GAME TRAIL CONTROLS

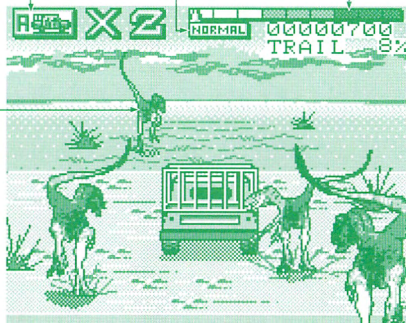


GAME TRAIL SCREEN

Indicates how many of that type of vehicle you have left.

Watch out for road hazards.

Shows vehicle damage. Keep away from the black!



Try to avoid these monsters!!

Indicates the percentage of the Trail you have completed.

NEST AREA

Once you have reached the Nest Area, you must search for five dinosaur eggs. There is an indicator in the lower left corner that will point to where you can find these eggs. Watch it closely.

As you search the nest areas, many of the younger dinosaurs will roam around and try to attack you. Remember that this is their home and they are just trying to protect it. Each time you are attacked, you will lose a little health. Lose all of your health and you will lose a life. You get three lives for the hard level, four lives for the medium level and five lives for the easy level.

To help frighten off the dinosaurs, you will be issued Tranquilizer Darts. Additionally, Flares will be given to Harding and a Sonic Screamer Device to Tembo. A Flare or Screamer will scare the dinosaur and make it run the other direction. A Tranquilizer Dart will paralyze the dinosaur for a short time. You have a limited number of Darts and Flares/Screamers, so use them wisely. You may pick up more along the way, however, if you watch carefully for them. You may also pick up extra lives. These will come in handy later in the game.



Darts



Flares



Screamer

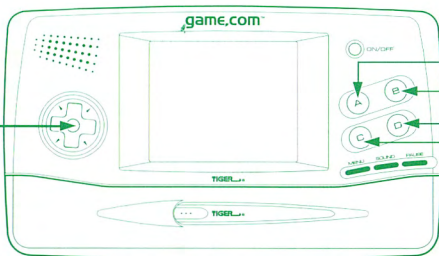


Extra Life

After you have found all five eggs in the Nest Area, you must find the Exit. This is located just past the Mother Dinosaur, who is guarding her remaining eggs. Be very careful when nearing the protective parent; she can be extremely dangerous!

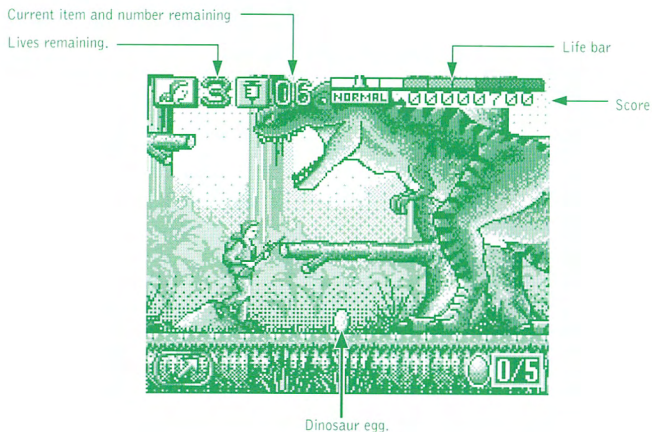
NEST AREA CONTROLS

Moves you left and right. Press ▼ to crawl. Push repeatedly in one direction to swing on a vine.



Changes current item/
weapon.
Activates current item/
weapon.
Not Used.
Jumps.

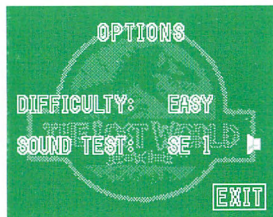
NEST AREA SCREEN



OPTIONS

If you touch OPTIONS on the Lost World title screen, you will be taken to the OPTIONS Screen. Using this menu, you will be able to change the options that affect your game.

To change any of the options on this screen, first touch the option to highlight it. You may then tap the option again to cycle through the choices.



YOU MAY CHANGE THE GAME DIFFICULTY ON THIS SCREEN

You may choose between EASY, MEDIUM or HARD gameplay. The harder the game, the more damage enemies will do.

If you want to listen to selections from the game's sound, touch SOUND TEST. You may cycle through the different choices. When you are happy with your choice, press the "A" button to listen to your selection.

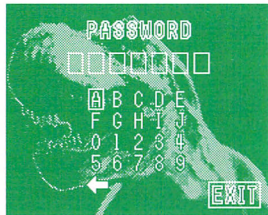
PASSWORD SCREEN

If you touch PASSWORD on the title screen, you will be taken to the PASSWORD Screen. Here you may return to a previous game.

After each completed level, you will be given a password. Write it down! If you want to return to a game previously started, you need to enter the Password.

To do this, move the cursor by using the Directional Pad. When you have highlighted the the character you wish, press the "A" button to enter it. If you make a mistake, press the ◀ symbol or the "B" key to back up and try again. When you have finished, press ENTER. If you have entered a valid password, you will be taken to the level you last played. If you have entered an incorrect password, you will get a chance to try again.

Enter your password here.



DEFECTIVE CARTS

If you find that your new LOST WORLD game.com cartridge is damaged or non-functional, DO NOT RETURN THE GAME TO THE STORE. The store will not have replacement cartridges. Instead write to us at:

TIGER ELECTRONICS REPAIR CENTER
980 Woodlands Parkway
Vernon Hills, Illinois 60061

Please include a note with your return explaining the problem along with a sales slip, date, place of purchase and price paid. We will do our best to repair or replace your cart promptly.

90 DAY LIMITED WARRANTY

Tiger Electronics, Inc. (Tiger) warrants to the original consumer purchaser of this product that the product will be free from defects in materials or workmanship for 90 days from the date of original purchase. This warranty does not cover damages resulting from accident, negligence, improper service or use or other causes not arising out of defects in materials or workmanship.

During this 90-day warranty period, the product will either be repaired or replaced (at Tiger's option) without charge to the purchaser, when returned with proof of the date of purchase to Tiger.

Product returned to Tiger without proof of the date of purchase or after the 90-day warranty period has expired, but prior to one year from the original date of purchase, will be repaired or replaced (at Tiger's option) for a service fee of U.S. \$15. Payments must be by check or money order payable to Tiger Electronics, Inc.

The foregoing states the purchaser's sole and exclusive remedy for any breach of warranty with respect to the product.

All product returned must be shipped prepaid and insured for loss or damage to:

Tiger Electronics, Inc. Repair Dept.

980 Woodlands Parkway

Vernon Hills, Illinois 60061 USA

The product should be carefully packed in the original box or other packing materials sufficient to avoid damage during shipment. Include a complete written description of the defect, a check if product is beyond the 90-day warranty period, and your printed name, address and telephone number.

THIS WARRANTY IS IN LIEU OF ALL OTHER WARRANTIES AND NO OTHER REPRESENTATIONS OR CLAIMS OF ANY NATURE SHALL BE BINDING ON OR OBLIGATE TIGER IN ANY WAY. ANY IMPLIED WARRANTIES APPLICABLE TO THIS PRODUCT, INCLUDING WARRANTIES OF MERCHANTABILITY OR FITNESS FOR A PARTICULAR PURPOSE, ARE LIMITED TO THE NINETY (90) DAY PERIOD DESCRIBED ABOVE. IN NO EVENT WILL TIGER BE LIABLE FOR ANY SPECIAL, INCIDENTAL, OR CONSEQUENTIAL DAMAGES RESULTING FROM POSSESSION, USE, OR MALFUNCTION OF THIS TIGER PRODUCT.

Some states do not allow limitations as to how long an implied warranty lasts and/or exclusions or limitations of incidental or consequential damages, so the above limitations and/or exclusions of liability may not apply to you. This warranty gives you specific rights, and you may also have other rights which vary from state to state.

If your product is not working properly, or if you have any questions and/or comments, please call us toll-free at 1-888-TIGR-SOS, and a service representative will be happy to help you.

©, TM, & © 1997 Tiger Electronics, Inc. All rights reserved.
THE LOST WORLD: JURASSIC PARK™ & © 1997 Universal City
Studios, Inc. and Amblin Entertainment, Inc. All Rights Reserved.
Licensed by MCA/Universal, Inc.

TIGER ELECTRONICS, INC.
980 Woodlands Parkway
Vernon Hills, Illinois 60061 USA
1-888-TIGR-SOS
www.game.com

© 1997 TIGER ELECTRONICS (UK) LLC.
Belvedere House, Victoria Avenue
Harrogate, North Yorkshire HG1 1EL, England.