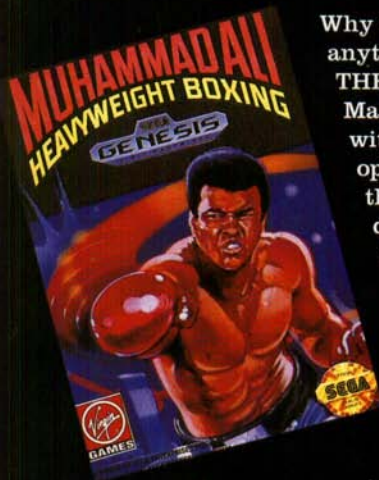


CHECKOUT THIS LINEUP!



Why settle for anything but THE GREATEST? Make the rounds with 9 ruthless opponents in this down-dirty fight to the finish for the heavy-weight title. These features will knock you out!

- 360 degree rotating ring so you don't miss any of the action
- Digitized sound so real you can feel that blow connect!
- Tournament or exhibition mode.

LICENSED BY SEGA ENTERPRISES LTD. FOR PLAY ON THE SEGA™ GENESIS™ SYSTEM.

SEGA AND GENESIS ARE TRADEMARKS OF SEGA ENTERPRISES LTD.



Virgin Games, Inc.
15061 Filch Avenue
Irvine, CA 92714 USA

FOR CUSTOMER SERVICE
PLEASE CALL (714) 833-1999

CHI'S PRO CHALLENGE GOLF is a trademark of Virgin Games, Inc. © 1993 Coconuts Japan, Co. All rights reserved. Virgin is a registered trademark of Virgin Enterprises, Ltd.

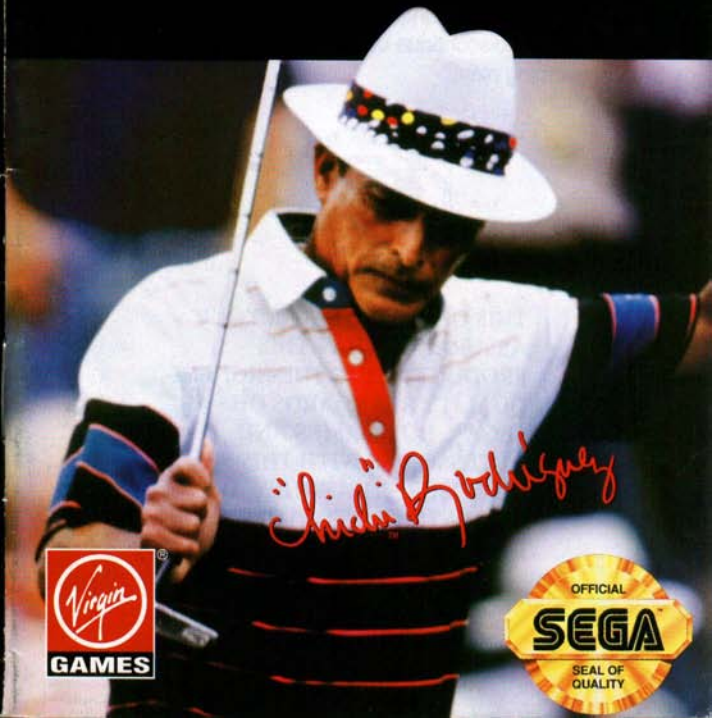
EmuMovies

PRINTED IN JAPAN

SEGA
GENESIS
16-BIT CARTRIDGE



INSTRUCTION MANUAL



EPILEPSY WARNING

WARNING: READ BEFORE USING YOUR SEGA VIDEO GAME SYSTEM

A very small percentage of individuals may experience epileptic seizures when exposed to certain light patterns of flashing lights. Exposure to certain patterns or backgrounds on a television screen or while playing video games may induce an epileptic seizure in these individuals. Certain conditions may induce undetected seizures or epilepsy. If you, or anyone in your family, has an epileptic condition, consult your physician prior to playing. If you experience any of the following symptoms while playing a video game: dizziness, altered vision, eye or muscle twitches, loss of awareness, disorientation, any involuntary movement, or convulsions, IMMEDIATELY discontinue use and consult your physician before resuming play.



THIS OFFICIAL SEAL IS YOUR ASSURANCE THAT THIS PRODUCT MEETS THE HIGHEST QUALITY STANDARDS OF SEGA™. BUY GAMES AND ACCESSORIES WITH THIS SEAL TO BE SURE THAT THEY ARE COMPATIBLE WITH THE SEGA™ GENESIS™ SYSTEM.

SEGA and GENESIS are trademarks of Sega Enterprises Ltd.

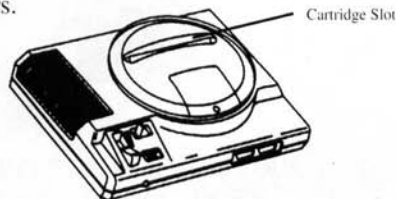
Chi Chi's



PRO CHALLENGE

Setting Up

1. Set up your Genesis System as described in its instruction manual. Plug in Control Pad 1. (Chi Chi's Pro Challenge requires only one Control Pad, even on two, three, or four-player games.)
2. Make sure the power switch is in the OFF position. Then, insert the Chi Chi's Pro Challenge cartridge into the cartridge slot, with the label facing the front of the console, and press it down firmly into place.
3. Move the power switch to the ON position. In a few moments, the Sega screen appears.
4. Press the Start Button when the Title screen appears.



Important: *If the Sega screen does not appear, turn the power switch to the OFF position. Make sure your system is set up correctly and the cartridge is properly inserted. Then turn the power switch ON again. Always make sure the power switch is in the OFF position before inserting or removing the cartridge.*

Table Of Contents

| | |
|---------------------------------------|----|
| Meet The Challenge | 4 |
| Become "Lord of the Links"! | 5 |
| Quick Start! | 6 |
| Choose Your Options! | 6 |
| Take Your Best Shot! | 9 |
| Four! | 13 |
| Putting Around | 13 |
| Check Out Your Score | 14 |
| The Mark of Chi Chi | 15 |
| Score Card | 18 |
| Warranty Information. | 19 |
| Credits | 20 |

Meet The Challenge !



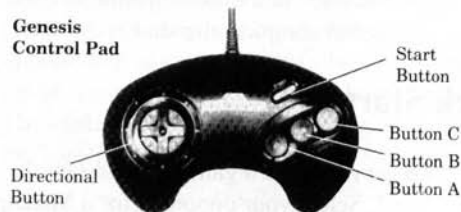
Set upon islands of fantasy, golf courses beyond your wildest dreams beckon you to set foot on their fabulous fairways, and PGA World Hall of Famer Chi Chi Rodriguez challenges you to play them all — and beat them!

Chi Chi's Pro Challenge will challenge beginner and ace alike with a mixture of masterfully planned holes and accurate player parameters. Defeat your opponents, beat the courses, and meet the challenge!

After pressing the Start Button when the Title Screen appears, you may move the Directional Button up or down to choose between a Quick Start game, or to set up a game in the Option Menus. Then press the A or C Button to start your game.

Become “Lord of the Links”

Use the following controls to conquer *Chi Chi's Pro Challenge*:



Directional Button (D-Button):

- For use with the Option menu, press up or down to move between options.
- For use aiming and choosing shot direction, simply move the marker, or cursor, to indicate the desired direction.

Press the Start Button:

- To begin play when the Title Screen appears.
- To skip the Hole Preview display.
- To surrender a hole in competitive play.

Press Button A or C:

- To make selections from the Option menu or to select a club, shot direction, and ball characteristics.
- To skip the Hole Preview display, or to skip the Scorecard display after each hole.

Press Button B:

- To “back up” to a previous choice. If, while setting up a shot you change your mind about a certain choice you have made, you can simply “back up” to that selection and choose again. Please note that once the Power Meter has been activated the player may no longer “back up” and make adjustments, but must instead complete the shot.

Quick Start!

To get right into a game, choose Quick Start! Select your opponent for a Matchplay game — the course will be chosen automatically, and you may begin play. If you choose Quick Start, please skip to the section entitled “Take Your Best Shot”. For more information about Matchplay games, see Match further on.

Choose your Options!

Stroke

This menu allows the player to set up a Strokeplay game with one to four human players.

In a Strokeplay game, players are scored by the number of strokes needed to complete each hole. The player who completes the course with the least amount of strokes is the winner.

Once the number of players has been determined, the course can be selected. The USA

course has a medium challenge rating, while the Japan course is difficult. After selecting the course, you must choose representative golfers from the established line up.

Match

Choose the Match menu to set up a Matchplay game with one or two players. In One Player mode, you must choose a golfer to represent you, and also pick a computer opponent to compete against. In Two Player mode, your opponent is another human player. The character selections take place after choosing a golf course.

In a Matchplay game, the player who completes a hole with the least number of strokes wins the hole. Players are scored on the number of holes won, regardless of how many strokes were actually needed to complete each hole. The player who wins the majority of the holes on the course wins the match.

The running score reflects the relative position between golfers. For example, the leader may be +3 compared to a trailing golfer this means the leader has won 3 more holes than the trailing player. When the score reads “even”, all players have won an equal number of holes.

Handicap

In this special Matchplay game, the winner of each hole chooses a club to remove from the loser's inventory, forcing the opponent to make due with the remaining clubs* for the remainder of the course.

*Both players will always have a putter and a one-wood club to ensure completion of the course.

Tournament

Choose the Tournament menu to enter up to four human players into the Virgin Cup Tournament. The human players will compete against the scores of up to 29 computer opponents in the semi-finals. Survivors of the semi-finals will go on to the finals. A password will be provided after completion of each course to allow players to save their place in the tournament.

Password

Use the Password menu to enter a password and resume play from a saved position within the Virgin Cup Tournament.

Move the Directional Button to the left or right to select different digits, then up or down to place the appropriate letters in those digits. When the entire password has been entered, press the A or C Button to start where you last left off.

Sound Test

In the Sound Test you can listen to any of the songs used in the game regardless of hole or course. You can even test your memory of where the sound effects are used! To hear the different songs, press the Directional Button up,

then left or right to choose different song numbers. To listen to the various sound effects, press the Directional Button down, then left or right to select different sound effects.

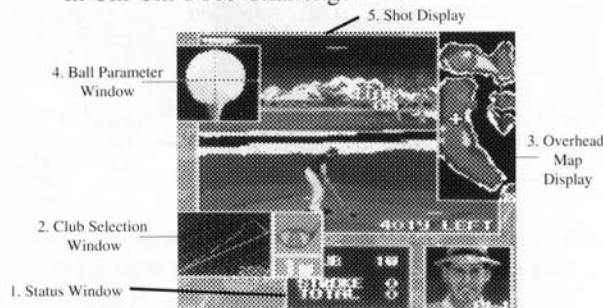
When finished, press the B Button to exit the Sound Test.

Take Your Best Shot!

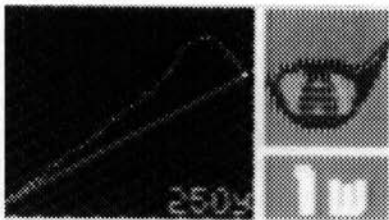
Upon setting foot on a hole, the player will be provided an aerial overview of the hole layout following a direct path from the tee to the cup, revealing any traps or obstacles which may lie along the way. You may skip the Hole Preview by pressing either the Start Button or the A or C Buttons.

After the preview you can begin to set up your shot.

To properly set up a shot, you will need to familiarize yourself with the menu interface used in Chi Chi's Pro Challenge:



1. The Status Window holds information about the current golfer, including the club in use, stroke count, and score.



2. The Club Selection Window identifies the various clubs and their respective ranges. This window is activated at the beginning of each hole. When active, moving the Directional Button left and right will change the current club in use.

Once the desired club is presented in the Club Selection Window, pressing the A or C Button will select the club and proceed to the next window. If necessary, the player may later return to this window by pressing the B Button to "back up" to this selection.

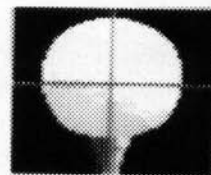


3. The Overhead Map Window offers a scaled view of the entire hole. Once a club has been

selected, the Overhead Map Window is activated. The shot direction is chosen by positioning the marker within the current club range. The golfer's current position is marked by a flashing point. The hole resides at the bottom of the representative flag. The wind direction is indicated by the direction of the red arrow.

Just as shot range is a factor in choosing a club, the wind direction and speed should be considered when specifying a shot direction. Once the ball is in flight, the wind will have an effect on the intended path of the ball resulting in a path which varies in accordance with the magnitude and direction of the wind. Through experience the player should be able to compensate for this deviation.

Once the direction is deemed satisfactory, press the A or C Button to proceed to the next Action Window.

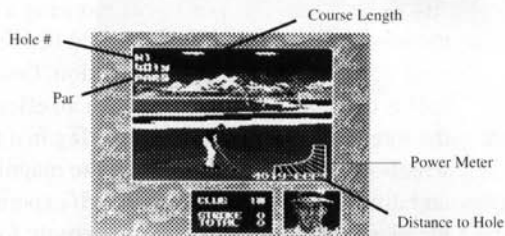


4. The Ball Parameter Window allows the player to specify hook and slice parameters and place top or bottom spin on the ball.

For example, setting the vertical cross hair to the far right side of the ball will result in a "Hook" which curves the ball to the left rather than traveling straight. Setting the horizontal cross hair to the far bottom of the ball will place the

maximum amount of bottom spin on the ball.

The Ball Parameter Window is activated once the club and direction selections have been made. Once the window is active, the player may move the crosshairs using the Directional Button to indicate the desired vertical and horizontal parameters.



5. The Shot Display offers a first person perspective of the shot to the cup and will appear full-size once the Ball Parameters have been selected.

Once the window is updated with the new perspective, the player may either "back up" to a previous selection, by pressing the B Button, or complete the shot by pressing the A or C Buttons.

When making a shot, the power meter is used to test the player's timing and coordination skills. Once the other windows are removed, pressing the A or C Buttons will bring up the power meter. Pressing either button a second time will set the Power Meter into motion.

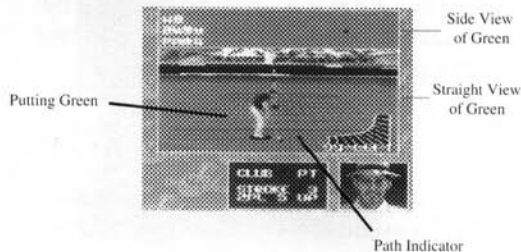
Once activated, the power in the Power Meter,

represented by blue shading, will fluctuate between minimum power and maximum power. While the Power Meter is in motion, the player must press either the A or C Button to determine the amount of force used in the shot.

Four!

Once a shot has been made, the display will switch to an aerial view from the perspective of the ball as it travels through the air above the fairway, eventually dropping back down onto the course. Please note: In the aerial view, the slopes within the green are exaggerated to provide details which would otherwise be lost at such a distance.

Putting Around



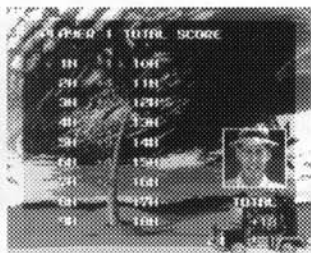
Once a player has reached the green, the Hole Display will offer some additional features for more precise shots. In the split-screen view of the green, the bottom section displays the normal first-person view, while the top section displays the side view of the green, offering another

perspective to the slope of the green.

While on the green, shot direction is specified by aligning the Path Indicator in the desired direction. The direction is selected by pressing the A or C Button. A Putting Grid is created automatically providing slope and trough information to the golfer.

Once the Putting Grid is constructed, the player may activate the Power Meter by pressing the A or C Button once. A second button press will set the Power Meter in motion. As with the Shot Display, pressing the A or C Button a third time will select the amount of force which is applied to the shot.

Check Out Your Score!



Score Display

After the completion of each hole, your scorecard will reflect your course performance. To skip the scorecard display, press the A or C Button. After completion of a course a summary of statistics will be presented. This may also be skipped by pressing the A or C Button.

The Mark of Chi Chi!

One of the most respected senior golfers in the world, Juan A. "Chi Chi" Rodriguez, a PGA World Golf Hall of Fame inductee, has certainly left his mark on the sport of golf. With more than 25 tour victories across both regular and senior circuits (and 20 of those in just the last six years), there's no end in sight to his winnings.

From Chi Chi's beginnings in the hot, dusty sugar fields of Rio Piedras, to his job as a ball marker, he worked hard at becoming what he is today. At the age of twelve, Chi Chi scored a 67 and knew he was destined to play the game that was to become his life — golf.

After joining the Army at age 19, Chi Chi came back to an assistant golf pro job at the Dorado Beach resort. He was taken under the guidance of Ed Dudley and Pete Cooper who sponsored his first two years on the Tour.

Laurence Rockefeller then stepped in as his sponsor and Chi Chi was on his way with his first Tour victory, the Denver Open. He has never looked back, and has been admired by both players and fans ever since.

Chi Chi is also respected for his humanitarian achievements which include the Chi Chi Rodriguez Youth Foundation, a home for troubled and abused youngsters. He has been

recognized Father of the Year, the Replica Hispanic Man of the Year, and honored with the Salvation Army Gold Crest Award, First Ambassador of Golf Award, and the 1989 Bobby Jones Award. The list goes on and on just like the man himself!

Regular Tour Victory Highlights:

- 1963 Denver Open • 1964 Lucky International, Western Open • 1967 Texas Open
- 1972 Byron Nelson Classic

Senior Tour Victory Highlights

- 1986 Senior TPC • 1986-88 Digital Seniors Classic • 1987 PGA Seniors Championship
- 1987 Vintage at the Dominion, Silver Pages Classic & Senior Players Reunion Pro-Am
- 1991 Vintage Arco Invitational

Other Career Highlights:

- Represented Puerto Rico on 12 World Cup Teams • Won the Charlie Bartlett Award from Golf Writer Association of America in 1974
- Named Senior Player of the Year and received the St. Arnold Palmer Award in 1987
- Hit eight birdies en route to winning the 1987 Silver Pages Classics, joining Bob Goulby and Fuzzy Zoeller in the record books.
- Received the NPRC Life Achievement Award in 1988

WARNING:

DO NOT USE THIS VIDEO GAME WITH A FRONT OR REAR PROJECTION TELEVISION. PLAYING VIDEO GAMES ON A PROJECTION TELEVISION MAY CAUSE PERMANENT DAMAGE TO YOUR PROJECTION TELEVISION SET. NEITHER VIRGIN GAMES NOR SEGA WILL BE LIABLE FOR DAMAGE TO YOUR PROJECTION TELEVISION RESULTING FROM THE USE OF ANY VIDEO GAME SYSTEM.

"Handling Your Cartridge"

- The Sega Genesis Cartridge is intended for use exclusively for the Sega Genesis System.
- Do not bend it, crush it, or submerge it in liquids.
- Do not leave it in direct sunlight or near a radiator or other source of heat.
- Be sure to take an occasional recess during extended play, to rest yourself and the Sega Cartridge.

CHI CHI'S PRO CHALLENGE Score Card

| Date | Course | Score | Comments |
|------|--------|-------|----------|
| | | | |
| | | | |
| | | | |
| | | | |
| | | | |
| | | | |
| | | | |
| | | | |
| | | | |
| | | | |
| | | | |
| | | | |
| | | | |
| | | | |
| | | | |
| | | | |
| | | | |
| | | | |
| | | | |
| | | | |

VIRGIN GAMES, Inc. Limited Warranty

VIRGIN GAMES, INC. WARRANTS TO THE ORIGINAL PURCHASER OF THIS VIRGIN GAMES, INC. CARTRIDGE THAT THE MEDIUM ON WHICH THIS COMPUTER PROGRAM IS RECORDED IS FREE FROM DEFECTS IN MATERIALS AND WORKMANSHIP FOR A PERIOD OF NINETY (90) DAYS FROM THE DATE OF PURCHASE. THIS VIRGIN GAMES, INC. CARTRIDGE IS SOLD "AS IS" WITHOUT EXPRESS OR IMPLIED WARRANTY OF ANY KIND AND VIRGIN GAMES, INC. IS NOT LIABLE FOR ANY LOSSES OR DAMAGES OF ANY KIND, RESULTING FROM USE OF THIS CARTRIDGE. VIRGIN GAMES, INC. AGREES FOR A PERIOD OF NINETY (90) DAYS TO EITHER REPAIR OR REPLACE, AT ITS OPTION, FREE OF CHARGE, ANY VIRGIN GAMES, INC. CARTRIDGE PRODUCT, POSTAGE PAID, WITH PROOF OF DATE OF PURCHASE AT ITS FACTORY SERVICE CENTER.

THIS WARRANTY IS NOT APPLICABLE TO NORMAL WEAR AND TEAR. THIS WARRANTY SHALL NOT BE APPLICABLE AND SHALL BE VOID IF THE DEFECT IN THE VIRGIN CARTRIDGE PRODUCT HAS ARISEN THROUGH ABUSE, UNREASONABLE USE, MISTREATMENT OR NEGLIGENCE. THIS WARRANTY IS IN LIEU OF ALL OTHER WARRANTIES AND NO OTHER REPRESENTATIONS "OR CLAIMS OF ANY NATURE SHALL BE BINDING ON OR OBLIGATE VIRGIN GAMES, INC., ANY IMPLIED WARRANTIES OF MERCHANTABILITY AND FITNESS FOR A PARTICULAR PURPOSE, ARE LIMITED TO THE NINETY (90) DAY PERIOD DESCRIBED ABOVE, IN NO EVENT WILL VIRGIN GAMES, INC. BE LIABLE FOR ANY SPECIAL, INCIDENTAL. OR CONSEQUENTIAL DAMAGES RESULTING FROM POSSESSION, USE OR MALFUNCTION OF THIS CARTRIDGE.

SOME STATES DO NOT ALLOW LIMITATIONS AS TO HOW LONG AN IMPLIED WARRANTY LASTS AND/OR EXCLUSIONS OR LIMITATIONS OR INCIDENTAL OR CONSEQUENTIAL DAMAGES SO THE ABOVE LIMITATIONS AND /OR EXCLUSIONS OF LIABILITY MAY NOT APPLY TO YOU. THIS WARRANTY GIVES YOU SPECIFIC RIGHTS, AND YOU MAY ALSO HAVE OTHER RIGHTS WHICH VARY FROM STATE TO STATE.

Credits

Developed by Soft Vision
Programmed by Atsuo Kazama
Produced and Published by Virgin Games, Inc.
Executive Producer Neil Young
Associate Producer Erik Yeo
Manual Written by Michael Winfield
Edited by Lisa Marcinko
Q/A Manager Michael Gater
Quality Assurance Team Noah Tool, Justin Norr,
Mike Glosecki, Scott Duckett,
Danny Lewis, Eugene Martin

Patents: U.S. Nos. 4,442,486/4,454,594/4,462,076;
Europe No. 80244; Canada No. 1,183,276;
Hong Kong No. 88-4302; Singapore No. 88-155;
Japan No. 82-205605 (Pending)