

# STAR WARS BOUNTY HUNTER™

LET THE HUNT BEGIN!



- You are Jango Fett, the most fearless bounty hunter in the galaxy, hired to capture a deranged dark Jedi.
- Fly, fight and pursue your bounty with an arsenal of weapons, including a missile-equipped jetpack, a flamethrower and more.
- Eliminate the scum of the galaxy with multiple targeting abilities and powerful dual blasters.
- The hunt spans across 6 diverse worlds and 18 unique levels, from the cities of Coruscant to the deserts of Tatooine.



Violence

PlayStation 2



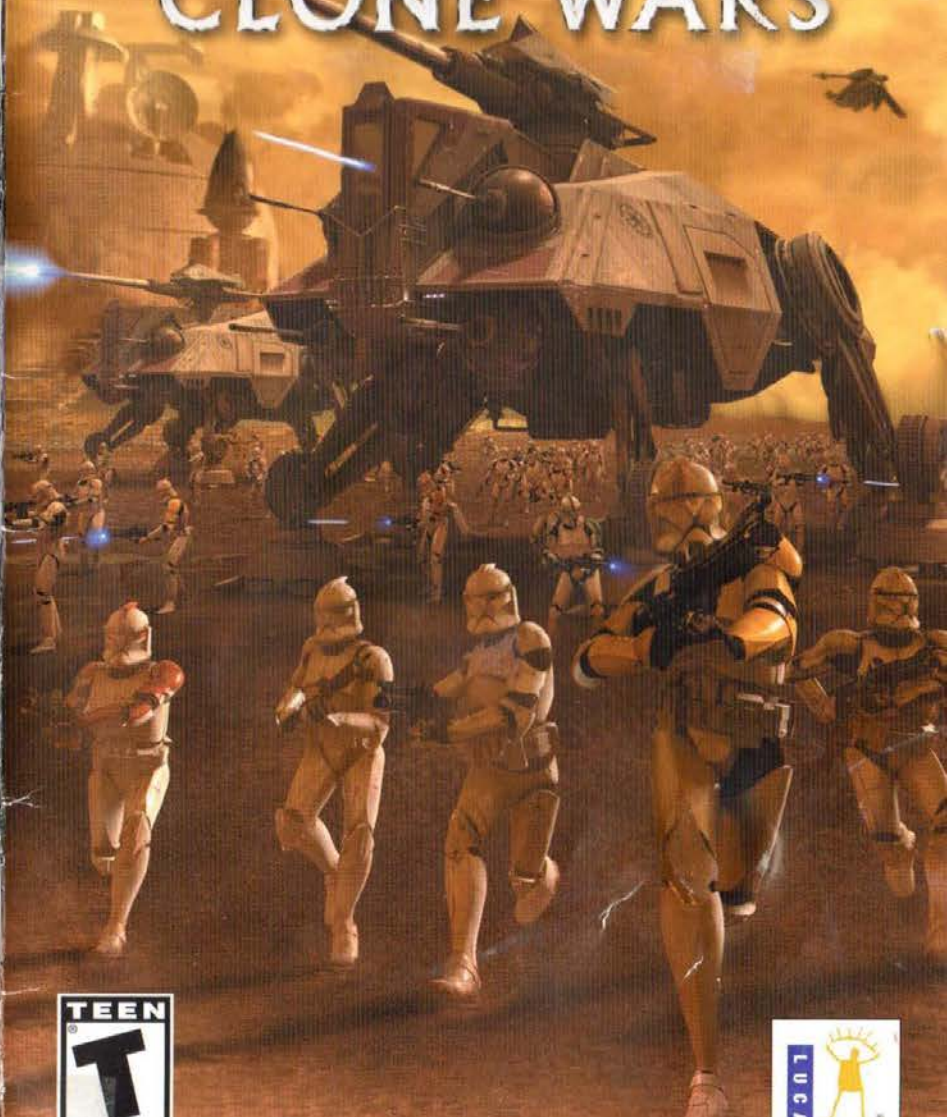
## LUCASARTS COMPANY STORE

VISIT US ONLINE TO FIND GREAT GAMING DEALS  
PLUS EXCLUSIVE ITEMS FOUND HERE AND  
NOWHERE ELSE. [STORE.LUCASARTS.COM](http://STORE.LUCASARTS.COM)

EmuMovies

LUCASARTS ENTERTAINMENT COMPANY PRESENTS

# STAR WARS THE CLONE WARS



## WARNING: READ BEFORE USING YOUR PLAYSTATION®2 COMPUTER ENTERTAINMENT SYSTEM.

A very small percentage of individuals may experience epileptic seizures when exposed to certain light patterns or flashing lights. Exposure to certain patterns or backgrounds on a television screen or while playing video games, including games played on the PlayStation 2 console, may induce an epileptic seizure in these individuals. Certain conditions may induce previously undetected epileptic symptoms even in persons who have no history of prior seizures or epilepsy. If you, or anyone in your family, has an epileptic condition, consult your physician prior to playing. If you experience any of the following symptoms while playing a video game — dizziness, altered vision, eye or muscle twitches, loss of awareness, disorientation, any involuntary movement, or convulsions — IMMEDIATELY discontinue use and consult your physician before resuming play.

## WARNING TO OWNERS OF PROJECTION TELEVISIONS:

Do not connect your PlayStation 2 console to a projection TV without first consulting the user manual for your projection TV, unless it is of the LCD type. Otherwise, it may permanently damage your TV screen.

## USE OF UNAUTHORIZED PRODUCT:

The use of software or peripherals not authorized by Sony Computer Entertainment America may damage your console and/or invalidate your warranty. Only official or licensed peripherals should be used in the controller ports or memory card slots.

## HANDLING YOUR PLAYSTATION 2 FORMAT DISC:

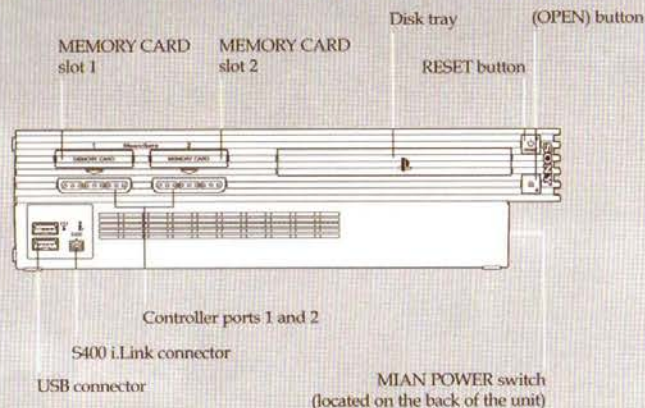
- This disc is intended for use only with PlayStation 2 consoles with the NTSC U/C designation.
- Do not bend it, crush it or submerge it in liquids.
- Do not leave it in direct sunlight or near a radiator or other source of heat.
- Be sure to take an occasional rest break during extended play.
- Keep this compact disc clean. Always hold the disc by the edges and keep it in its protective case when not in use. Clean the disc with a lint-free, soft, dry cloth, wiping in straight lines from center to outer edge. Never use solvents or abrasive cleaners.

## TABLE OF CONTENTS

GETTING STARTED	2
DEFAULT CONTROLS	3
PREPARING TO PLAY	4
PLAYING THE GAME	8
IN-GAME DISPLAY	9
MAIN CHARACTERS	10
REPUBLIC UNITS	12
BONUS POINTS	13
POWER-UPS	14
MULTIPLAYER MODES	14
SPECIAL COMBAT TIPS	15
LUACASARTS COMPANY STORE	16
CREDITS	20
HOW TO CONTACT LUCASARTS	21
SOFTWARE LICENSE/ LIMITED WARRANTY	22

## GETTING STARTED

### PLAYSTATION®2 COMPUTER ENTERTAINMENT SYSTEM

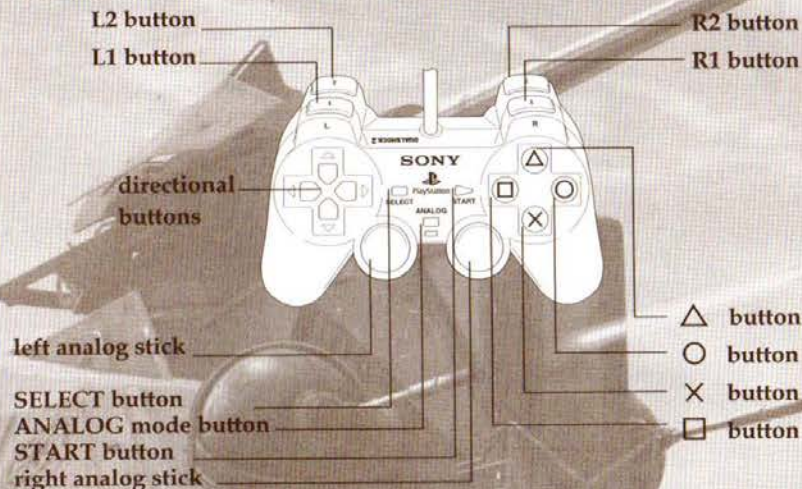


Set up the PlayStation®2 computer entertainment system according to the instructions in its Instruction Manual. Make sure the MAIN POWER switch (located on the back of the console) is turned on. Press the standby/RESET button. When the power indicator lights up, press the open button and the disc tray will open. Place the *Star Wars: The Clone Wars* disc on the disc tray with the label side facing up. Press the open button again and the disc tray will close. Attach game controllers and other peripherals, as appropriate. Follow onscreen instructions and refer to this manual for information on using the software.

*Star Wars: The Clone Wars* supports the PlayStation®2 DUALSHOCK®2 analog controller and the memory card (8MB) (for PlayStation®2) if you wish to save your progress.

## DEFAULT CONTROLS

### DUALSHOCK®2 ANALOG CONTROLLER CONFIGURATIONS



#### LEFT ANALOG STICK:

**Thrust/Steer:** Controls vehicle movement and turning. The control is pressure-sensitive so the farther you push the control, the faster you move.

#### DIRECTIONAL BUTTONS:

**Squad Commands:** Each directional button issues a different command to the player's squad.  
**Up:** Attack player's target.  
**Left:** Break formation and attack at will.  
**Right:** Hold current position.  
**Down:** Return to formation and follow player vehicle.

#### × BUTTON:

**Primary Fire:** Press to fire your primary weapon.

#### ■ BUTTON:

**Secondary Fire:** Press to fire your secondary weapon.

#### ● BUTTON:

**Special Abilities:** These abilities vary for different vehicles.

**Tank, Speeder Bike and STAP:**

Turbo boost.

**Gunship:** Composite beam lasers.

**Jedi:** Force Push.

**Assault Walker:** Plasma shields.

**Maru:** Seismic pulse emitter.

#### ▲ BUTTON:

**Camera Viewpoint:** Switch the camera between first- and third-person perspectives.

- L1 BUTTON:** Special Abilities/Turbo Boost (same as ● button)
- R1 BUTTON:** **Zoom:** Hold button to remain in zoom view.
- L2 BUTTON:** **Tank, Speeder Bike, STAP, Maru, Jedi and AAT Controls:** Strafe left (move laterally to the left).  
**Walker Controls:** Turn walker turret left.  
**Gunship Controls:** Gunship slows down to its minimum speed.
- R2 BUTTON:** **Tank, Speeder Bike, STAP, Maru, Jedi and AAT Controls:** Strafe right (move laterally to the right).  
**Walker Controls:** Turn walker turret right.  
**Gunship Controls:** Gunship speeds up to its maximum speed.
- START BUTTON:** Pause Menu or Skip Cutscene

## PREPARING TO PLAY

Upon starting *Star Wars: The Clone Wars*, the game's Title screen will appear. Press the START button to continue. Assuming you have a memory card in the PlayStation<sup>2</sup>, select MEMORY CARD slot 1, and then press the X button to confirm your selection.

While a memory card is not required to play the game, it is strongly recommended so that you can save your progress. If you do not have a memory card in MEMORY CARD slot 1, a screen will appear to indicate this fact. Press the X button to continue playing the game without a memory card, or insert a memory card in MEMORY CARD slot 1, press ↓ on the directional buttons, and then press the X button to retry.

Before long, the game's Title Screen will appear. Press the START button to enter the Player Profile screen.

## SELECTING OR CREATING A PLAYER PROFILE

If you haven't previously played *Star Wars: The Clone Wars*, you will need to create a player profile to save your game. The game will default to MEMORY CARD slot 1.

The game will establish a save file in MEMORY CARD slot 1 to update your progress. *Star Wars: The Clone Wars* has room for five player profiles, all of which take up a total of 134KB of memory on your memory card. Press the X button to set up your first saved game/player profile. If you have previously played *Star Wars: The Clone Wars*, you can move between player profiles by pressing ↑ and ↓ on the left analog stick or the directional buttons, and then pressing the X button to select the player profile you want to play. Player profiles in *Star Wars: The Clone Wars* record your mission progress, as well as your bonus points.

If you are starting a new player profile, you must select a name (up to 11 characters) for your profile. Press the left analog stick or the directional buttons ←, →, ↑ and ↓ to choose the letters or numbers, and then press the X button to insert the letter or number. If you make a mistake, select DELETE to erase the last character selected. After entering a name, select OK to proceed and BACK to cancel. **NOTE:** Players can also use the directional buttons to move the cursor in all menu screens.

## ERASING A SAVED PLAYER PROFILE

If you choose to delete a player profile, you can do this from the Player Profile screen. Move the left analog stick or the directional buttons ↑ or ↓ to select the profile you want to delete. Then press the ▲ button to delete. Confirm that you want to delete the profile by selecting YES and pressing the X button.

## MAIN MENU SCREEN

When you enter the Main Menu screen you will have three choices: CAMPAIGN, MULTIPLAYER and OPTIONS. Push ← or → on the left analog stick or directional buttons, and then press the X button to make your selection.



## CAMPAIGN SELECTION SCREEN

After selecting Campaign from the Main Menu, you will move to a holographic map of the *Star Wars* galaxy that shows you which missions are available to play. When you first start the game, the only mission available will be Geonosis: The Rescue Begins. *Star Wars: The Clone Wars* requires that you complete missions in order before moving to the next. Once you've completed one or more missions, you will be able to scroll through the available missions by pressing ← or → on the left analog stick or the directional buttons to see the number of bonus objectives completed for this mission. Also, you can replay any missions that you have already completed. For more information, see Bonus Points on page 13. **NOTE:** After completing a mission, your progress is automatically saved if you have a memory card in MEMORY CARD slot 1.

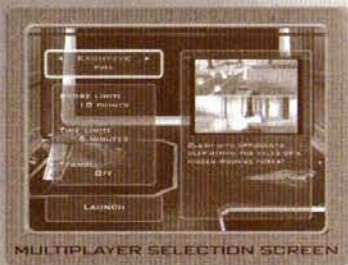


Once you have found the mission that you want to play, press the X button to select it. Choose the difficulty level of the mission. Padawan is easiest, Jedi Knight is normal difficulty and Jedi Master is the hardest. Press the X button again to start the mission.

## MULTIPLAYER SELECTION SCREEN

After selecting Multiplayer on the Main Menu, you'll see the Multiplayer Selection screen. The top left section allows you to scroll through available multiplayer levels by using the left analog stick or the directional buttons.

The right side of the screen gives you a description of the selected level. Press the **X** button to select the level. After selecting a level, you can select and change various options, such as Score Limit and Time Limit, as well as toggle Teams on/off. You move between options by pressing **↑** and **↓** on the left analog stick or the directional buttons and change options by pressing **←** and **→**. After the options are set, press the **X** button to move to the Launch area. Press the **X** button again to begin the multiplayer game. You can back up at any time by pressing the **▲** button.



### OPTIONS SELECTION SCREEN

Selecting Options from the Main Menu allows you to customize various aspects of *Star Wars: The Clone Wars*. **The Clone Wars**: Use the left analog stick or the directional buttons to select Options from the Main Menu and press the **X** button to bring up the following options menus.

**NOTE:** Throughout the option menus, use the left analog stick or the directional buttons to select between menu options by pressing **↑** or **↓**. Press the **X** button to go to a sub-menu or to confirm a selection. The **▲** button reverts you back to the previous menu option. The **BACK** option at the bottom of any menu has the same functionality.



### Game Options

To further enhance your experience while playing *Star Wars: The Clone Wars*, you can customize the following gameplay details.

**CAMERA 1ST PERSON/3RD PERSON:** Allows you to toggle between first-person and third-person view.

**VIBRATION ON/OFF:** You can turn on and off the Vibration feature on your DUALSHOCK™2 analog controller.

**CROSS HAIR ON/OFF:** This option allows you to toggle on and off the cross hair that helps you aim at your enemies.

**DISPLAY FULL SCREEN/WIDE SCREEN:** You can adjust the display of *Star Wars: The Clone Wars* to match your television's aspect ratio. Standard TVs use the Full Screen setting, while many newer TVs use the 16x9 Wide Screen aspect ratio. Please consult your TV's user manual if you are unsure which setting to use.

**RESET OPTIONS:** Select this option to return to the original settings on all game options.

**BACK:** This takes you back to the Options Selection screen.

### Audio Options

You can customize the audio experience as well with the following options:

**MUSIC VOLUME:** Select this option to adjust the music volume that plays during the game and in the menu system.

**SOUND EFFECTS VOLUME:** Manipulate the volume of the game's sound effects.

**SPEECH VOLUME:** Adjust the volume of the speech you hear throughout the game.

**MODE SURROUND/STEREO/MONO:** Toggle between the sound modes using the **X** button and the left analog stick or the directional buttons.

**RESET OPTIONS:** Select this option to return to the original settings on all sound options.

**BACK:** This takes you back to the Options Selection screen.

### Bonuses

This menu allows you to access the various extra materials you may open as you play through the game.

**MOVIES:** Select this option to scroll through all of the cutscenes for completed missions.

**BONUS MATERIALS:** This option allows you to view all of the various bonuses unlocked throughout your progress in the game. See the section Bonus Points on page 13 for further details.

**CODES:** If you have a special code for *Star Wars: The Clone Wars*, this is where you enter it. Press **←** or **→** and **↑** and **↓** on the left analog stick or the directional buttons to select a letter or number. Press the **X** button to insert a letter and the **▲** button or **DELETE** to erase letters. When finished entering the code, select the **OK** option to enter it. If you have entered a correct code, you will hear a confirmation sound.

**BACK:** This takes you back to the Options Selection screen.

### Credits

View the credits for all the people who produced *Star Wars: The Clone Wars*.

### Back

This option will take you back to the Main Menu.

## PAUSE MENU SCREEN

**OBJECTIVES:** This section lists your mission-critical objectives. If you don't succeed in the objectives, you will fail the mission.

**BONUS OBJECTIVES:** These are extra goals that you can achieve on every mission. They vary from mission to mission, and will unlock bonus items. You must successfully complete all mission-critical objectives in order to receive bonus points for completed bonus objectives. See Bonus Points on page 13 for more information on what you get when you achieve bonus objectives.

**CONTINUE:** This returns you back to the game.

**OPTIONS:** Change game or audio options and view statistics.

**CONTROLS:** View a diagram of the current control scheme.

**RESTART:** Begin the mission again.

**QUIT:** You can exit the mission at any time.



## PLAYING THE GAME

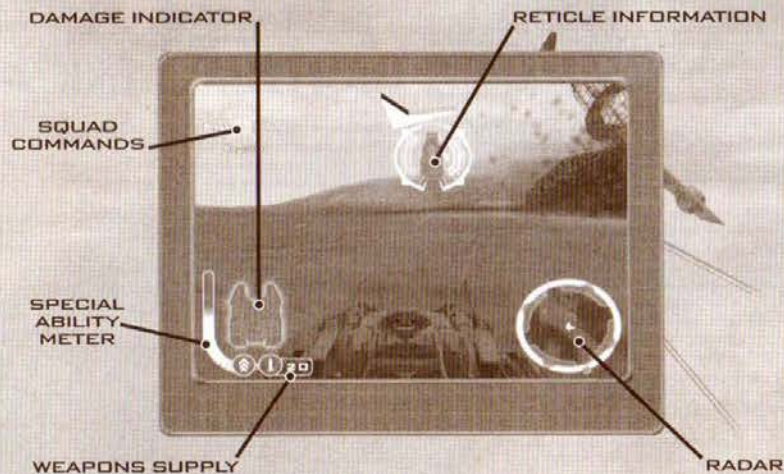
You will pilot a variety of craft in *Star Wars: The Clone Wars*, but an on-screen interface remains consistent throughout the game and guides you toward your goals, as well as providing important information on the status of your character.

**RADAR:** This display indicates your current position (the green triangle in the center) as well as the locations of other targets and objects in a mission. Green icons are friendly units, while red icons are enemy units. Pulsing green icons show mission-critical objectives that you must complete to pass a mission. These objectives can be friendly or enemy units as well as locations. The radar is also useful for finding your way through obstructions because paths between buildings or other objects are always clearly marked.

**DAMAGE INDICATOR:** This icon in the shape of your vehicle shows how much hull damage your vehicle has left before it is destroyed. The blue glow around the icon shows your shields. The hull of your ship is not damaged until your shields are depleted.

**WEAPONS SUPPLY:** The area below your Damage Indicator displays how many secondary weapons you have left to use.

## IN-GAME DISPLAY



**SQUAD COMMANDS:** Here's where you give your supporting units orders using the directional buttons.

**RETICLE INFORMATION:** Thin, circular lines appear around all enemy units. When you target a unit, the lines become thicker and an enemy Damage Indicator appears on the right side of the reticle. Any unit that is part of a primary objective will have an additional marking, small triangles that move in a circle, to clearly separate them from the rest of the units.

**SPECIAL ABILITY METER:** This bar that runs up the left side of your Damage Indicator shows how much turbo boost you have left when piloting the hover tank and the speeder bike. When in the gunship and on the maru, it tracks your special weapon; while in the walker, it indicates your special shield energy.

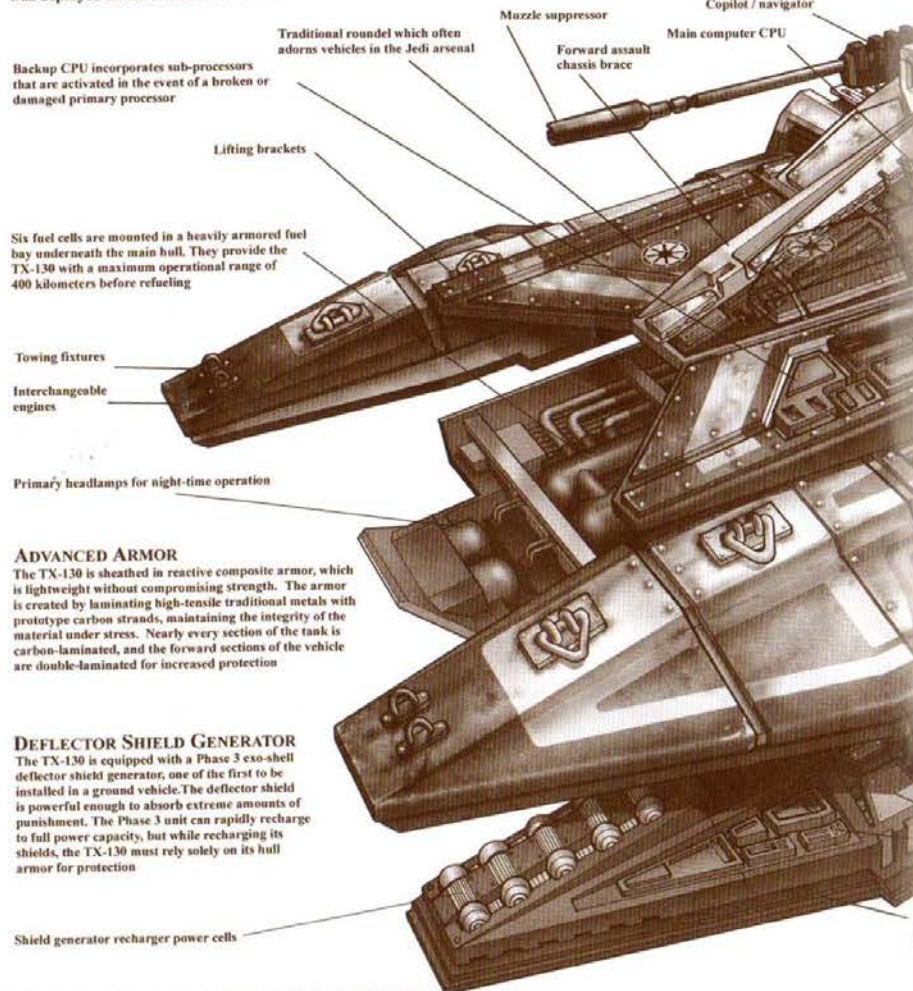
## END-OF-CAMPAIGN SCREEN

This screen resembles the Pause Menu, listing all of the primary and bonus objectives for a mission. Objectives highlighted in green have been successfully completed, objectives in white are incomplete and red shows failed objectives. All primary objectives must be completed to pass a mission. Text will appear beneath the bonus objectives if you have unlocked any bonuses. You must go to the Bonuses Menu to see what you have unlocked.

# STAR WARS THE CLONE WARS TX-130 FIGHTER TANK

When the war between the Galactic Republic and the Separatists first began, the Jedi foresaw the need for a new ground assault vehicle to bolster their military forces. The Republic army chose the TX-130, a new armored vehicle developed and manufactured by Rothana Heavy Engineering. The highly advanced combat tank was quickly transformed from a relatively untested prototype to the Republic's primary ground superiority unit.

The TX-130 is a versatile craft capable of filling a number of combat roles, from maintaining defensive perimeters to spearheading hit-and-run attacks. The craft is a near-perfect balance of maneuverability and armor, and is a formidable opponent in combat. While clone troopers pilot unmodified versions of the TX-130, Jedi are known to add custom parts and modifications to their tanks. Many Jedi use prototype parts too expensive to be included in the standard production model. Mace Windu pilots a customized version of the TX-130, which was deployed in the Battle of Geonosis.

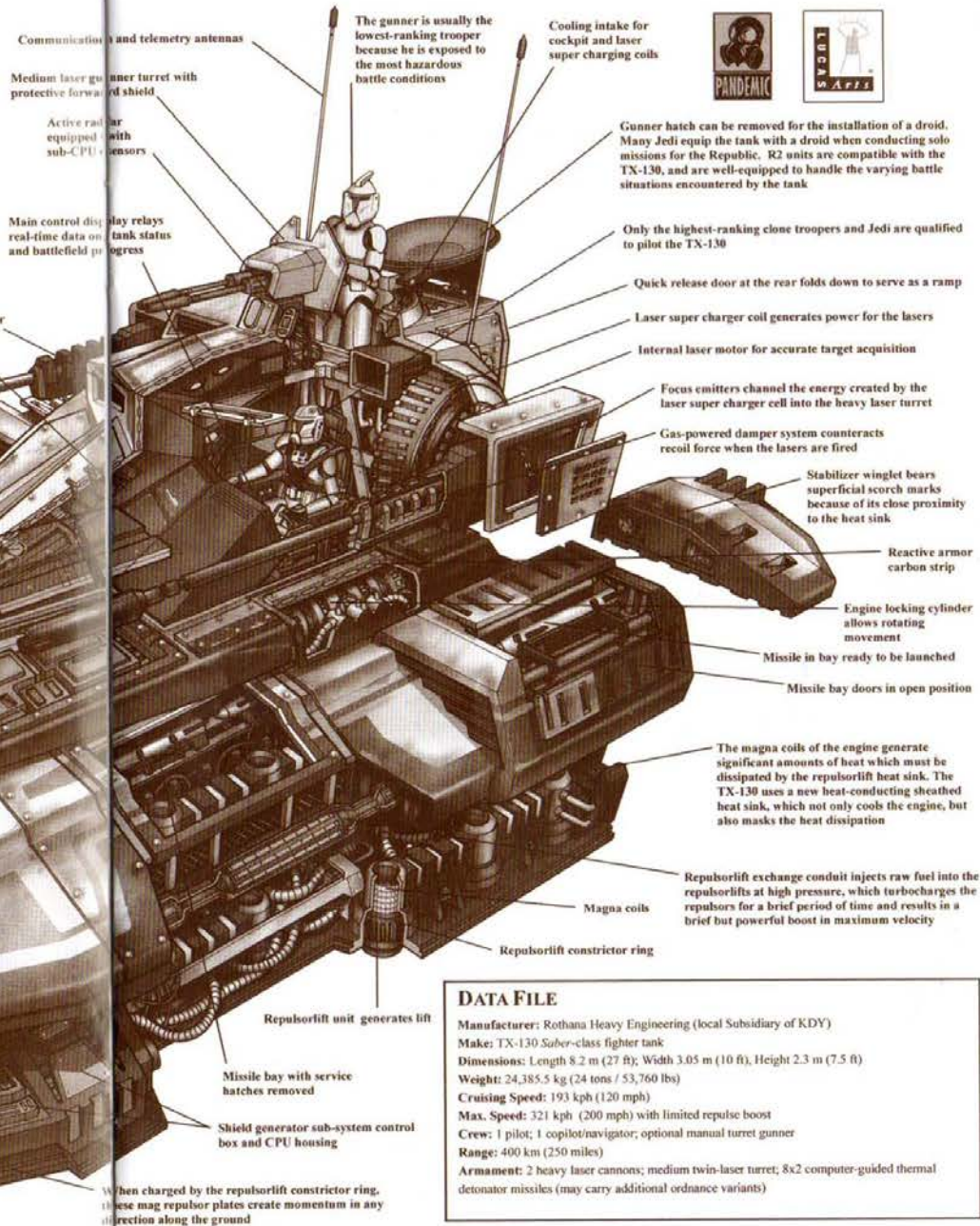


## ADVANCED ARMOR

The TX-130 is sheathed in reactive composite armor, which is lightweight without compromising strength. The armor is created by laminating high-tensile traditional metals with prototype carbon strands, maintaining the integrity of the material under stress. Nearly every section of the tank is carbon-laminated, and the forward sections of the vehicle are double-laminated for increased protection

## DEFLECTOR SHIELD GENERATOR

The TX-130 is equipped with a Phase 3 exo-shell deflector shield generator, one of the first to be installed in a ground vehicle. The deflector shield is powerful enough to absorb extreme amounts of punishment. The Phase 3 unit can rapidly recharge to full power capacity, but while recharging its shields, the TX-130 must rely solely on its hull armor for protection



## DATA FILE

**Manufacturer:** Rothana Heavy Engineering (local Subsidiary of KDY)  
**Make:** TX-130 *Suber*-class fighter tank  
**Dimensions:** Length 8.2 m (27 ft); Width 3.05 m (10 ft); Height 2.3 m (7.5 ft)  
**Weight:** 24,385.5 kg (24 tons / 53,760 lbs)  
**Cruising Speed:** 193 kph (120 mph)  
**Max. Speed:** 321 kph (200 mph) with limited repulse boost  
**Crew:** 1 pilot; 1 copilot/navigator; optional manual turret gunner  
**Range:** 400 km (250 miles)  
**Armament:** 2 heavy laser cannons; medium twin-laser turret; 8x2 computer-guided thermal detonator missiles (may carry additional ordnance variants)

## MAIN CHARACTERS

### ANAKIN SKYWALKER

A headstrong and powerful young Jedi, Anakin was discovered on the Outer Rim planet of Tatooine by Qui-Gon Jinn. Anakin was late in starting his Jedi training by the Jedi Order's standards, but he quickly excelled in many areas, as he was incredibly strong with the Force. Anakin is a very capable Jedi, but can also be unpredictable, which gives many in the Jedi Order cause for concern.



### OBI-WAN KENOBI

Much like his Master Qui-Gon Jinn, Obi-Wan is an unconventional Jedi Knight, adept with a lightsaber, powerful in the Force, but possessing a unique outlook on life. Obi-Wan accepted the task of training young Anakin Skywalker, fulfilling Qui-Gon's dying wish. A cunning swordsman and a quick wit, Obi-Wan

dutifully obeys his elders in the Jedi Council but often finds his own way through many of the challenges he's faced as a Jedi Knight.

### MACE WINDU

Sharing the title of Senior Member of the Jedi Council with Master Yoda, Mace Windu is as well respected as any in the order. He's an amazingly powerful swordsman, nearly unrivaled in his balance of both strength and finesse. It's the combination of a cool head and the furious might of his signature purple-bladed lightsaber that makes Mace Windu the consummate Jedi Master.



### COUNT DOOKU

Former Jedi Master and current leader of the Confederacy of Independent Systems, Count Dooku was one of the most respected members of the Jedi Order before leaving it after the Battle of Naboo. An unmatched swordsman who still practices an elegant and ancient style of lightsaber combat, Dooku was a great loss to the Jedi. His political ideals, as well as

his charisma and considerable Force powers, have made him and his group of Separatists a formidable threat to the Republic.

### CYDON PRAX

Cydon Prax is one of the most ruthless of Count Dooku's mercenaries and became Dooku's right-hand man after the death of Jango Fett. He pilots a fighter tank modified with special repulsorlifts and thrusters that make the craft extremely maneuverable. Also, the craft's customized weapon systems make it amazingly accurate and deadly for its size.



### BERA KAZAN

Bera is a notorious smuggler who has run with some of the most heinous criminals in the galaxy. She's also a connoisseur of unusual and rare technological artifacts, amassing quite a collection as her work takes her from one side of the galaxy to the other. Bera's ship, the *Sarpazium Rose*, is covered with scars and scorch marks

collected during many close escapes, which speaks to her ability to deliver in a crunch.

### LUMINARA UNDULI

Hailing from Mirial, Luminara has dedicated her life to the protection of justice and order. She ascended to the rank of Jedi Master more than ten years prior to the outbreak of the Clone Wars. Her quiet disposition and unique lightsaber combat style fool many strangers into thinking that Luminara is a passive Jedi Master, but those who have fought beside her know that she is a fierce warrior.



### ULIC QEL-DROMA

One of the most tragic figures in the history of the Jedi Order, Ulic was a respected Jedi Knight in his day, nearly 4,000 years before the Clone Wars. Ulic took on a daring mission to infiltrate the Sith and "conquer the dark side from within." Unfortunately the allure of the dark side was too great. During this campaign, known as

the Sith War, Ulic aided the Sith in constructing the Dark Reaper, a weapon of mass destruction. Ulic was eventually captured by the Jedi and stripped of his connection to the Force.



## REPUBLIC UNITS

### SPEEDER BIKE

The Aratech 74-Z military speeder bike is a fast, one-man craft that allows troopers to get quickly from one end of a battlefield to the other to deliver reconnaissance information. Used by the Republic in nearly all of their conflicts in the Clone Wars, this multipurpose craft is much faster than a Trade Federation STAP and contains nearly the same amount of firepower.

- ✦ PRIMARY WEAPON: Underbody-mounted light laser turret.
- ✦ SECONDARY WEAPON: None.
- ✦ SPECIAL ABILITY: Repulsor boost.



### REPUBLIC FIGHTER TANK

Considered to be the Jedi starfighter of ground combat, the TX-130 fighter tank is a specially designed repulsor craft that makes use of the heightened abilities of its Jedi pilots. Its repulsorlifts are specially tuned for quick maneuvering, yet the Republic fighter tank still carries a heavy payload of firepower. The Jedi

commanders of the Clone Wars find the TX-130 to be the perfect complement to their increased agility and vision.

- ✦ PRIMARY WEAPON: Dual medium laser cannons.
- ✦ SECONDARY WEAPON: Concussion missiles.
- ✦ SPECIAL ABILITY: Repulsor boost.



### AT-XT ASSAULT WALKER

These two-legged assault walkers employ faster movement than their six-legged counterparts, but also deliver high firepower and a solid defense. An experimental craft created by Rothana Heavy Engineering and produced at the Kuat Drive Yards facilities, the AT-XT did not go into full mass-production during the Clone Wars, as the engineers were constantly revising its design.

- ✦ PRIMARY WEAPON: Heavy laser cannons.
- ✦ SECONDARY WEAPON: Proton mortar.
- ✦ SPECIAL ABILITY: Plasma shields.



### MARU

The maru is a creature native to the Kashyyyk system, and has been domesticated by the Wookiees inhabiting the small moon Alaris. The Wookiees raise the maru as beasts of burden, and as a means of transportation. It is a reptilian creature, agile and dexterous, possessing a long tail that it uses to attack enemies. The maru's saddle is equipped with dual bowcasters and a seismic pulse emitter.



- ✦ PRIMARY WEAPON: Mounted twin bowcasters.
- ✦ SECONDARY WEAPON: Thermal detonator.
- ✦ SPECIAL ABILITY: Seismic pulse emitter.

### REPUBLIC GUNSHIP

The Rothana Heavy Engineering Low Altitude Assault Transport/infantry (LAAT/i) repulsorlift gunship is the workhorse of the Republic clone army. Primarily used for troop transport and air support, these versatile aircraft combine ultra-maneuverability with amazing firepower.

Piloted by one of the highly trained clone pilots, these craft can perform deft maneuvers in all environments and weather conditions. In the hands of a Jedi pilot, these ships can do the unimaginable.

- ✦ PRIMARY WEAPON: Multiple laser cannons.
- ✦ SECONDARY WEAPON: Concussion missiles.
- ✦ SPECIAL ABILITY: Composite-beam pinpoint laser turrets.



### MOBILE ASSAULT CANNON (MAC)

Probably due to its cumbersome name, the Kuat Drive Yard's Self-Propelled Heavy Artillery-Turbolaser (SPHA-T) has many nicknames, from the MAC to the bug gun, but it has just one use: heavy firepower. These slow-moving cannons fire the heaviest turbolasers in the Republic army and are used to great effect in the invasion of Geonosis.

- ✦ PRIMARY WEAPON: Heavy turbolaser.

### AT-TE ASSAULT WALKER

The All-Terrain Tactical Enforcer (AT-TE) can perform a wide variety of missions, from troop transport to straightforward assault missions. The AT-TE's six legs allow it to traverse almost any terrain, while its firepower is nearly unmatched. A heavy projectile cannon mounted on a turret is the main weapon, but it is also equipped with six anti-personnel lasers that defend the craft from both front and rear attacks.

- ✦ PRIMARY WEAPON: Long-range heavy laser cannon.
- ✦ SECONDARY WEAPON: Six laser turrets.



## BONUS POINTS

In every mission there are three bonus objectives. A player receives bonus points only if all of the mission-critical objectives are completed. If a player completes one bonus objective, they get one bonus point. Completing any two bonus objectives grants the player two bonus points. Completing all three rewards the player with three bonus points. There are 48 bonus points in total, but you only need 45 points to unlock all the extras.

## POWER-UPS



**One-Fourth Health Pack:** Adds 25 percent to player's Health. Health will not exceed 100 percent.



**Full Health Pack:** Brings player's Health to 100 percent.



**Ammunition:** Refills a player's secondary weapon ammunition to full.



**Invincibility:** Brings player's Health and Shields to 100 percent and creates a shield that gives the player temporary invulnerability to damage.



**Super Blasters:** Gives player three times the weapon power for a limited time.



**Disintegration Field:** For a limited time, if the player comes in contact with any enemy while equipped with the Disintegration Field, the enemy will be destroyed instantly.



**Cloaking:** The player becomes completely invisible to all enemies for a limited time.

## MULTIPLAYER MODES

*Star Wars: The Clone Wars* features several multiplayer modes, each supporting two simultaneous players. There are four different modes of play. In many multiplayer games, extra points can be earned by running over Jedi credits that appear on the map.

### DUEL

Two players battle it out for supremacy.

Players can choose different vehicles after each time they are killed. Victory is achieved by scoring a set number of kills or getting the most kills within a set time limit. A player can choose to restart the match by pressing the START button.

### CONTROL ZONE

In each level there is one "control zone" which is denoted by a ring on the ground. Players receive one point for killing opposing players and additional points for remaining the sole player in the control zone. When control is established, there is an audio cue and the control zone ring will change to that player's color. If both players are within the control zone, the zone will return to a neutral color.

### CONQUEST

Conquest is played between two teams, the Republic and the Separatists. The Republic team pilots TX-130 fighter tanks and the Separatists pilot GATs. Each team has a home base, which it must defend. The objective is to destroy the other team's base. In the center of the playing field are a series

of outposts, which are captured by a player moving into the outpost. As long as a player is within an outpost, defensive turrets (up to a maximum of four) will be built around the outpost. Once there are four turrets around an outpost, the outpost will then produce one AI unit. If the AI unit is destroyed, the outpost will produce another one. AI units can be given orders using the directional buttons. If any one turret on an outpost is destroyed, the outpost will not produce an AI unit until all turrets have been rebuilt. Control of an outpost changes sides if all defensive turrets are destroyed and an opposing team member moves into the outpost. The game is won when one team destroys the other's home base.

### JEDI ACADEMY

There are two different versions of this game, one is played with vehicles, the other with Jedi, but the rules remain the same. Both players are on the same team and cannot harm one another, except during special gladiator rounds. The players begin in the center of an arena and opposing forces come in waves to destroy the players. If a player dies, he/she will not respawn (except in an elimination round where players battle each other for points and all destroyed players respawn before the next wave of enemies). The game finishes when the last player alive has fallen to enemy units. Players score points depending on what they destroy. The last player alive may not necessarily have the highest final score.

## SPECIAL COMBAT TIPS

- ✦ Use the zoom function to take out enemies in the distance before they get too close.
- ✦ When your primary objective is to destroy something, use your teammates' supporting fire (by pressing **↑** on the directional buttons) to take out the objective quickly.
- ✦ While piloting the gunship, holding down the L2 button will allow you to turn faster.
- ✦ Master circle strafing in your Republic hover tank (hold down the L2 or R2 button, and then press the left analog stick the opposite direction) to keep your tank continually moving while attacking.
- ✦ Mix missiles and secondary laser fire while in the gunship to maximize the effectiveness of your firepower without running out of missiles.
- ✦ A speeder bike is hard to turn when using its turbo boost — be sure to save turbo for straightaways.
- ✦ Save the AT-X1 walker's shield special ability for when you face multiple powerful enemies. Do not waste it on smaller enemies because it takes a long time to recharge.



MULTIPLAYER SCREEN

## THE LUCASARTS COMPANY STORE

### Never Underestimate the Power of the Force

Be among the legions of fans that enjoy safe, quick and convenient shopping at [store.lucasarts.com](http://store.lucasarts.com).

You will find more information on exclusive items and great gaming deals—all with our money-back guarantee. (See Web site for details.)

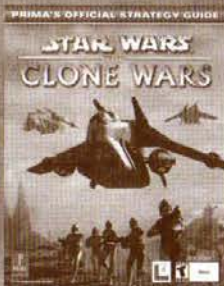


To order, visit our Web site or call us toll-free at 888-532-4263.

Operators are available Monday-Friday, 7 a.m. to 6 p.m. Pacific time.

*(Please note: Product support is not available on this line.)*

### Available Now



#### *Star Wars*: The Clone Wars™ Official Strategy Guide

Prepare yourself for war and lead the Republic's clone army to victory with the extra tips and tricks provided in Prima's official strategy guide. 168 pages.

\$14.95

## LUCASARTS COMPANY STORE EXCLUSIVE ITEMS!



### Mandalorian Cap

The fearsome Mandalorian skull will affix the gaze of anyone who dares look in its direction. The skull is embroidered in strong blue on our gray, soft twill cap with inconspicuous "vents" at the seams for extra comfort. One size fits most.

\$16.95



### LucasArts 20th Anniversary Mug

LucasArts celebrates 20 years of gaming this year, so raise a glass—or better yet, a mug! Our sleek black 14 oz. coffee mug in heavy, break-resistant acrylic is microwave and dishwasher safe and comes with a removable rubber lid. Features our 20th Anniversary logo and our standard logo.

\$12.95



### LucasArts Portrait Shirt

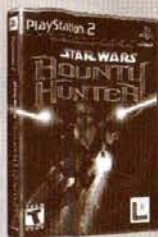
Generations collide in our uniquely eye-catching tee displaying LucasArts faces of past, present and future. Short sleeve, 50 percent cotton/50 percent polyester, royal blue.

Adult sizes.

M-XL \$13.95    XXL \$15.95

## AVAILABLE NOW!

For the PlayStation®2 Computer Entertainment System!



### Star Wars® Bounty Hunter™

The hunt begins! You are Jango Fett, the most dangerous bounty hunter around. Grab your blasters and get ready to face off against galactic scum, fearsome beasts and brutal competition as you pursue your prey, a deranged dark Jedi. For the galaxy's most wanted, there is no place to hide...  
\$49.95



### Star Wars® Racer Revenge™

Jockey for position with a tangle of opponents or leave the pack behind at intense, nerve-jangling, plant-scorching simulated speeds of up to 600 mph. Crash and bash competitors into oblivion as you take them out of the race for good. It's racing—with a vengeance!  
\$19.95



### Star Wars® Starfighter™

Join three starfighter pilots in a series of harrowing missions to save Naboo and the galaxy from the oppressive abuse of the Trade Federation. May the Force be with you, young starfighter pilot.  
\$19.95



### Star Wars® Jedi Starfighter™

The galaxy is in turmoil as the evil Captain Toth and a mysterious figure threaten the Galactic Republic. It is up to Adi Gallia—a top Jedi of the Council, dispatched by Mace Windu—to investigate disturbances in the Karthakk system. Single- or dual-player action in over 15 story-based missions!  
\$29.95



## COMING SOON!



### Indiana Jones® and the Emperor's Tomb™

Join Indy as he travels to 1935 China to prevent a powerful artifact from falling into evil hands. Indy's latest globe-spanning adventure takes you from the jungles of Ceylon and underwater palaces in Istanbul, to the deadly streets of Hong Kong and beyond. It will take more than just your trusty whip and pistol to avoid deadly traps and to navigate through danger.



### RTX Red Rock™

2103. Brutal alien invaders have captured our colony on Mars and threaten Earth. You are Wheeler, Army major, astronaut, and trained Radical Tactics Expert—a samurai of the future. Plunge into battle on the Red Planet armed with deadly alien weapons and your own superpowers. Control robots. Drive rovers. It's the ultimate adventure on man's farthest frontier.



For availability, please visit [store.lucasarts.com](http://store.lucasarts.com) today!

## CREDITS

Developed by  
**Pandemic Studios**

Directed by  
Greg Borrud

Lead Designer  
Eric Gewirtz

Art Director  
Carey Chico

Programmers  
Dan Andersson, Lead  
Adam Batters  
Brad Pickering  
Chris Baker  
Chris Fandrich  
David Givone  
John Northan  
Ken Miller  
Nathan Mates  
Salah Nouri  
Wallace Huang

Additional  
Programmers  
Dan Stanfill  
Dan Yu

Designers  
Jack Davis  
Robert Lo  
Sean Soucy

Additional Design  
Dax Berg  
Jens Andersen

Artists  
David Griffiths, Lead  
Chris Arden  
Chris Hunt  
Chris McGee  
Jason Shum  
Joon Choi  
Katy Hargrove

Additional Art  
Roger Suen  
Stan Woo

Concept Artist  
Miles Teves

Production  
Coordinator  
David Baker

CEO  
Andrew Goldman

President  
Josh Resnick

Support Staff  
Mario Cabrera  
Joseph Donaldson  
Kent Schuelke  
Rick Viscariello

Additional Character  
Models  
Studio Mythos

Artists  
Mark Pajarillo  
Richard Smith  
Tom Nguyen  
Ryan Odagawa  
Sean McKinney  
Richard Wong  
Brian Sanchez

Production  
Irene Mapua  
Christy Jue  
Newton Mapua  
Kevin Hendrickson  
Franck De Girolami

Hi-Res Cutscenes  
Creat Studios

Executive Producers  
Anton Petrov  
Daniel Prouline

Production Director  
Natalia Kholiavko

Project Leader  
Avenir Sniatkov

Director  
Vladimir Aleksandrov

Storyboard Artist  
Fidail Guilmutdinov

Artists  
Vitaly Anikin  
Andrey Kalukin

Modelling & Texture  
Mapping  
Alla Zubakova  
Andrey Gromov  
Andrey Povarov  
Blagoy Borisov  
Dmitry Astakhov  
Ekaterina Serezhina  
Yury Tchernych

Character Setup  
Anton Oparin

3D Animation and  
Special Effects  
Anna Zibrova  
Elena Lesakova  
Irina Nikiforova

Olga Trifanenkova  
Roman Bykov  
Stanislav Volodarsky

Lighting  
Dmitry Kholodov  
Peter Anikin  
Yury Tchernych

Post-Processing  
Olga Cheremissova

Motion Capture  
Service  
hOuse of mOves

Uses Bink Video. ©  
1997-2002 by RAD  
Game Tools, Inc.

LucasArts  
Entertainment  
Company

Producer  
Jim Tso

Assistant Producer  
Nate Schaumberg

QA Testers  
Johnny Szary, Lead  
Patrick Bratton, Asst.  
Lead GameCube  
K.C. Coleman, Asst.  
Lead PS2

Bob McGehee  
Brian Koenig  
Henry Hall

Ian Wolfard  
Isaiah Webb  
Jeffrey Gullett  
Sean Thomson

International  
Associate Producer  
Bryan Davis

International Tester  
David Chapman, Lead

Lead Sound  
Design/Music Editing  
Nick Peck

Sound Design  
Andrea Gard

Additional Sound  
Design  
Larry the O  
Erik Foreman

Voice  
Director/Producer  
Darragh O'Farrell

Voice Editing  
Will Beckman

Voice & International  
Dept. Coordinator  
Jennifer Sloan

Original Star Wars  
Sound Effects  
Ben Burtt

Sound Design  
Services Provided by  
Skywalker Sound, a  
division of Lucas  
Digital Ltd., Marin  
County.

Original Star Wars  
Music Composed by  
John Williams

© and © Lucasfilm  
Ltd. & J.M. All rights  
reserved. Used under  
authorization.

Published by Bantha  
Music (BMI).  
Administered by  
and/or copublished  
with Warner-  
Tamerlane Music  
Publishing Corp.

Voice Credits  
Amidala, Bera Kazan  
Grey Delisle

Anakin  
Matt Lucas

Battle Droid Scout,  
Count Dooku  
Corey Burton

Clone Trooper,  
Cylon Prax  
Andre Sogliuzzo

Outpost Commander,  
Wookiee  
Frank Welker

Luminara  
Lori Tritel

Mace Windu  
T.C. Carson

Obi-Wan  
Jonathan Love

Lilic Qel-Droma  
Charles Dennis

Yoda  
Tom Kane

Dark Acolyte, Engineer  
Darran Norris

Voice Recorded at  
Screenmusic Studios,  
Studio City, CA

Engineers  
Paul Andris  
Arnold Geber  
Ernie Sheesley  
Gordon Sutherland

Asst. Engineers  
Lisa Carlon  
Eric Lewis  
Crystal Wright

SyncSpot Digital  
Audio Post, Calgary,  
AB Canada

Engineer  
Beau Shiminsky

Content Coordinator  
Justin Lambros

Product Marketing  
Sam Saliba

Public Relations  
Alexis Mervin  
Heather Twist Phillips  
Tom Sarris

International  
Marketing/PR  
Kathy Apostoli-Greene

Marketing  
Coordinator  
Karina Hallum

Sales and Channel  
Marketing  
Meredith Cahill  
Alyx Huynh

Greg Robles  
Katy Walden  
Mike Maguire  
Tim Moore

Internet Marketing  
Jim Passalacqua  
Melissa Federoff  
Tony Dewesse

Manual Writers  
Jim Tso

Justin Lambros

Manual Editor  
Brett Rector

Manual Design  
Cassia Dominguez

Package Design  
Blind Mice Studio

Very Special Thanks  
George Lucas

## HOW TO CONTACT LUCASARTS

LucasArts has set up a variety of services to provide you with information about our latest games, hint and gameplay assistance, and technical support.

### HINT LINE U. S.

If you need a hint, you may call our automated Hint Line. This service costs 95 cents per minute, requires a touch tone phone, and you must be at least 18 years old or have a parent's permission to call. The number is **1-900-740-JEDI (1-900-740-5334)**. The option to speak with a live Hint Operator is also available from this number. Hint line operators are available during regular business hours, 8:30 a.m. to 5:00 p.m. (Pacific Standard Time), Monday-Friday. (Average call length is three minutes.)

### Canada

Our Hint Line is also available to our Canadian customers. This service costs \$1.25 (U.S.) per minute, requires a touch tone phone, and you must be at least 18 years old or have a parent's permission to call. The number is **1-900-677-JEDI (1-900-677-5334)**. Hint line operators are available during regular business hours, 8:30 a.m. to 5:00 p.m., Monday-Friday (Pacific Standard Time). (Average call length is three minutes.)

### WHERE TO FIND US ONLINE

Visit the LucasArts Technical Support Web site at [support.lucasarts.com](http://support.lucasarts.com). From there, you can receive online technical support through Yoda's Help Desk, browse technical documents, or leave a message for an online representative.

### YODA'S HELP DESK

We are proud to feature Yoda's Help Desk, an interactive knowledge base, which is available in the Technical Support section of the LucasArts Web site at [support.lucasarts.com](http://support.lucasarts.com). Yoda's Help

Desk offers solutions to technical issues based on information you provide. Visitors to Yoda's Help Desk will be able to receive technical support 24 hours a day, seven days a week. If Yoda's Help Desk is unable to provide you with a solution to your problem, you can send an e-mail message to an online representative

### TECHNICAL SUPPORT PHONE NUMBER

This number is for technical assistance only. Hints will not be given out over the Technical Support line.

You can reach our Technical Support department by calling **1-415-507-4545**. We are available to help you Monday-Thursday 8:45 a.m.-5:30 p.m. and on Friday 8:45 a.m.-4:30 p.m. (Pacific Standard Time). We are closed daily 11:45 a.m.-1:00 p.m.

### TECHNICAL SUPPORT FAX

For your convenience, we also offer the option of faxing us with your technical questions at **1-415-507-0300**. When sending us a fax, please include your name, return fax number with the area code, and a voice phone number so we can contact you if we experience any problems when trying to fax you back.

### TECHNICAL SUPPORT MAILING ADDRESS

LucasArts Entertainment Company LLC  
P.O. Box 10307  
San Rafael, CA 94912  
Attn: Product Support

### LUCASARTS COMPANY STORE

Safe, quick, convenient shopping is just a click away. Visit our secure online store at [store.lucasarts.com](http://store.lucasarts.com) for great deals on games and unique items you won't find anywhere else—hats, T-shirts and so much more. Place your order online or call us toll-free at **1-888-LUC-GAMES**. (Technical support is not available on this line.)

## SOFTWARE LICENSE AND LIMITED WARRANTY

PLEASE READ THIS LICENSE CAREFULLY BEFORE INSTALLING OR USING THE SOFTWARE. BY USING THE SOFTWARE, YOU ARE AGREEING TO BE BOUND BY THE TERMS OF THIS LICENSE. IF YOU DO NOT AGREE TO THE TERMS OF THIS LICENSE, DO NOT INSTALL OR USE THE SOFTWARE, DELETE THE SOFTWARE AND ALL RELATED FILES, AND PROMPTLY RETURN THIS PACKAGE AND ITS CONTENTS TO THE PLACE OF PURCHASE FOR A REFUND OR EXCHANGE SUBJECT TO THE RETURN POLICY OF THE RETAILER.

The computer software, artwork, music, and other components included in this product (collectively referred to as the "Software") are the copyrighted property of LucasArts Entertainment Company LLC and its licensors (collectively referred to as "LEC"). The Software is licensed (not sold) to you, and LEC owns all copyright, trade secret, patent and other proprietary rights in the Software. You may use the Software only in connection with a Sony PlayStation®2 computer entertainment system. You may not: (1) copy (other than once for back-up purposes), distribute, rent, lease or sublicense all or any portion of the Software; (2) modify or prepare derivative works of the Software; (3) transmit the Software over a network, by telephone, or electronically using any means, except in the course of your network multiplayer play of the Software over authorized networks; (4) engage in matchmaking for multiplayer play over unauthorized networks; (5) design or distribute unauthorized levels; or (6) reverse engineer, decompile or disassemble the Software. You may transfer the Software, but only if the recipient agrees to accept the terms and conditions of this Agreement. If you transfer the Software, you must transfer all components and documentation and erase any copies residing on the game console and/or computer equipment. Your license is automatically terminated if you transfer the Software.

LEC warrants to the original consumer purchaser that the media furnished in this product will be free from defects in materials and workmanship under normal use for a period of ninety (90) days from the date of purchase (as evidenced by your receipt). If the media furnished in this product proves to be defective, and provided that the original consumer purchaser returns the media to LEC in accordance with the instructions in this paragraph, LEC will replace the defective media: (a) free of charge to the consumer purchaser, if the media proves to be defective within the ninety (90) day period following the date of purchase, and (b) for a fee of \$15.00 per Compact Disc, if the media proves to be defective after the expiration of the ninety (90) day warranty period. To obtain a replacement CD, please return the CD only, postage prepaid, to LucasArts Entertainment Company LLC, P.O. Box 10307, San Rafael, CA 94912, accompanied by proof of date of purchase, a description of the defect, and your name and return address, as well as a check for \$15.00 per CD made payable to LucasArts Entertainment Company LLC if after expiration of the warranty period. LEC will mail a replacement to you.

You expressly acknowledge and agree that use of the Software is at your sole risk. Except for the limited ninety (90) day warranty on the media set forth above, the Software and any related documentation or materials are provided "AS IS" and without warranty of any kind. LEC EXPRESSLY DISCLAIMS ALL WARRANTIES, EXPRESS AND IMPLIED, INCLUDING, BUT NOT LIMITED TO, THE IMPLIED WARRANTIES OF MERCHANTABILITY, FITNESS FOR A PARTICULAR PURPOSE AND NONINFRINGEMENT. LEC DOES NOT WARRANT THAT THE FUNCTIONS CONTAINED IN THE SOFTWARE WILL MEET YOUR REQUIREMENTS, THAT THE OPERATION OF THE SOFTWARE WILL BE UNINTERRUPTED OR ERROR-FREE OR THAT DEFECTS IN THE SOFTWARE WILL BE CORRECTED. THE ENTIRE RISK AS TO THE RESULTS AND PERFORMANCE OF THE SOFTWARE IS ASSUMED BY YOU AND YOU (AND NOT LEC) ASSUME THE ENTIRE COST OF ALL SERVICING, REPAIR AND/OR CORRECTION. SOME JURISDICTIONS DO NOT ALLOW THE EXCLUSION OF IMPLIED WARRANTIES, SO THE ABOVE EXCLUSION MAY NOT APPLY TO YOU.

UNDER NO CIRCUMSTANCES INCLUDING NEGLIGENCE SHALL LEC, OR ITS DIRECTORS, OFFICERS, EMPLOYEES, LICENSORS OR AGENTS, BE LIABLE TO YOU FOR ANY INCIDENTAL, INDIRECT, SPECIAL OR CONSEQUENTIAL DAMAGES (INCLUDING DAMAGES FOR LOSS OF BUSINESS PROFITS, BUSINESS INTERRUPTION, LOST DATA, LOSS OF BUSINESS INFORMATION, AND THE LIKE) ARISING OUT OF THE POSSESSION, USE, OR MALFUNCTION OF THIS PRODUCT, INCLUDING WITHOUT LIMITATION DAMAGE TO PROPERTY AND, TO THE EXTENT PERMITTED BY LAW, DAMAGES FOR PERSONAL INJURY, EVEN IF LEC OR AN LEC AUTHORIZED REPRESENTATIVE HAS BEEN ADVISED OF THE POSSIBILITY OF SUCH DAMAGES OR LOSS. SOME JURISDICTIONS DO NOT ALLOW THE LIMITATION OR EXCLUSION OF LIABILITY FOR INCIDENTAL OR CONSEQUENTIAL DAMAGES, SO THE ABOVE LIMITATION OR EXCLUSION MAY NOT APPLY TO YOU.

YOU AGREE THAT THE LIABILITY OF LEC ARISING OUT OF ANY KIND OF LEGAL CLAIM (WHETHER IN CONTRACT, TORT, OR OTHERWISE) WILL NOT EXCEED THE AMOUNT YOU ORIGINALLY PAID FOR THE USE OF THE SOFTWARE.

WARRANTY GIVES YOU SPECIFIC LEGAL RIGHTS, AND YOU MAY HAVE OTHER RIGHTS DEPENDING ON THE LAWS IN YOUR STATE.

If the Software is acquired under agreement with the U.S. government or any contractor thereof, it is acquired as "commercial computer software" subject to the provisions hereof, as specified in 48 CFR 12.212 of the FAR and, if acquired for Department of Defense (DoD) units, 48 CFR 227-7202 of the DoD FAR Supplement, or sections succeeding thereto.

© 2002 LucasArts Entertainment Company LLC. © 2002 Lucasfilm Ltd. & TM or ® as indicated. All rights reserved. Used under authorization. LucasArts and the LucasArts logo are registered trademarks, and the Human Figure Design logo is a trademark, of Lucasfilm Ltd.

This is a work of fiction. All of the characters and events portrayed in this game are fictional. Any resemblance to real persons, living or dead, or actual events, is purely coincidental.



LUCASARTS ENTERTAINMENT COMPANY LLC  
P.O. BOX 10307  
SAN RAFAEL, CA 94912

WWW.STARWARS.COM

WWW.LUCASARTS.COM



SWFAN.WIZARDS.COM

1-800-TRUE-FAN



STAR WARS: THE CLONE WARS  
0-23272-32035-5