

**PLAY IT WILD!**  
**AVAILABLE NOW**

PlayStation 2

COLUMBIA PICTURES  
animation

SONY PICTURES  
ENTERTAINMENT  
PRODUCTS



UBISOFT

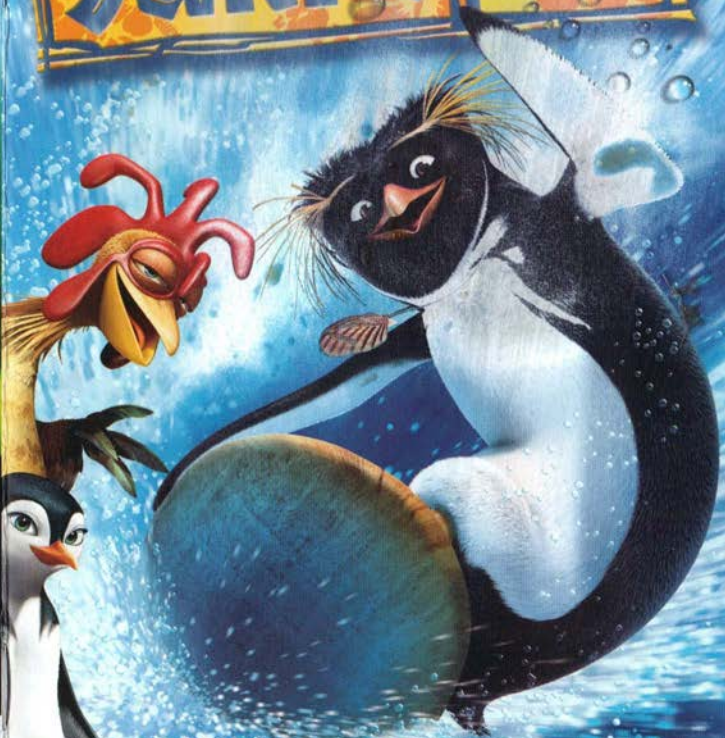
Ubisoft, Inc. - 625 Third St. - San Francisco, CA 94107

Open Season: TM & © 2007 Sony Pictures Animation Inc. All rights reserved. Game Software excluding Sony Elements: © 2006 Ubisoft Entertainment. All rights reserved. Ubisoft, Ubi.com, and the Ubisoft logo are trademarks of Ubisoft Entertainment in the U.S. and/or other countries. "PlayStation" and the "PS" Family logo are registered trademarks of Sony Computer Entertainment Inc.

EVERYONE 10+  
E  
Cartoon Violence  
Crude Humor

The ratings icon is a trademark of the Entertainment Software Association. Manufactured and printed in the U.S.A. 393559-MNL

# SURF'S UP



EVERYONE 10+  
E  
CONTENT RATED BY  
ESRB



UBISOFT

EmuMovies

**⚠ WARNING: PHOTOSENSITIVITY/EPILEPSY/SEIZURES**

**READ BEFORE USING YOUR PLAYSTATION®2 COMPUTER ENTERTAINMENT SYSTEM.**

A very small percentage of individuals may experience epileptic seizures or blackouts when exposed to certain light patterns or flashing lights. Exposure to certain patterns or backgrounds on a television screen or when playing video games may trigger epileptic seizures or blackouts in these individuals. These conditions may trigger previously undetected epileptic symptoms or seizures in persons who have no history of prior seizures or epilepsy. If you, or anyone in your family, has an epileptic condition or has had seizures of any kind, consult your physician before playing. **IMMEDIATELY DISCONTINUE** use and consult your physician before resuming gameplay if you or your child experience any of the following health problems or symptoms:

- dizziness
- altered vision
- eye or muscle twitches
- loss of awareness
- disorientation
- seizures
- any involuntary movement or convulsion

**RESUME GAMEPLAY ONLY ON APPROVAL OF YOUR PHYSICIAN.**

**Use and handling of video games to reduce the likelihood of a seizure**

- Use in a well-lit area and keep as far away as possible from the television screen.
- Avoid large screen televisions. Use the smallest television screen available.
- Avoid prolonged use of the PlayStation 2 system.
  - Take a 15-minute break during each hour of play.
- Avoid playing when you are tired or need sleep.

Stop using the system immediately if you experience any of the following symptoms: lightheadedness, nausea, or a sensation similar to motion sickness; discomfort or pain in the eyes, ears, hands, arms, or any other part of the body. If the condition persists, consult a doctor.

**WARNING TO OWNERS OF PROJECTION TELEVISIONS:**

Do not connect your PlayStation 2 system to a projection TV without first consulting the user manual for your projection TV, unless it is of the LCD type. Otherwise, it may permanently damage your TV screen.

**HANDLING YOUR PLAYSTATION 2 FORMAT DISC:**

- This disc is intended for use only with PlayStation 2 consoles with the NTSC U/C designation.
- Do not bend it, crush it or submerge it in liquids.
- Do not leave it in direct sunlight or near a radiator or other source of heat.
- Be sure to take an occasional rest break during extended play.
- Keep this compact disc clean. Always hold the disc by the edges and keep it in its protective case when not in use. Clean the disc with a lint-free, soft, dry cloth, wiping in straight lines from center to outer edge. Never use solvents or abrasive cleaners.

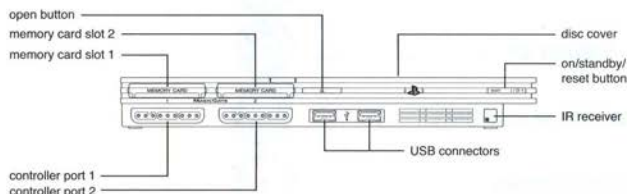
# TABLE OF CONTENTS

|                                  |                   |
|----------------------------------|-------------------|
| GETTING STARTED .....            | 2                 |
| STARTING UP .....                | 3                 |
| GAMEPLAY CONTROLS .....          | 4                 |
| INTRODUCTION .....               | 4                 |
| PLAY THE GAME .....              | 5                 |
| THE SURFERS .....                | 8                 |
| GAME SCREEN .....                | 13                |
| SURFING .....                    | 14                |
| SURFER AND BOARD SELECTION ..... | 15                |
| LEAF SLIDING (UNLOCKABLE) .....  | 17                |
| ITEMS AND COLLECTIBLES .....     | 18                |
| MULTIPLAYER .....                | 19                |
| EXTRAS .....                     | 19                |
| TECHNICAL SUPPORT .....          | 24                |
| WARRANTY .....                   | INSIDE BACK COVER |





## GETTING STARTED



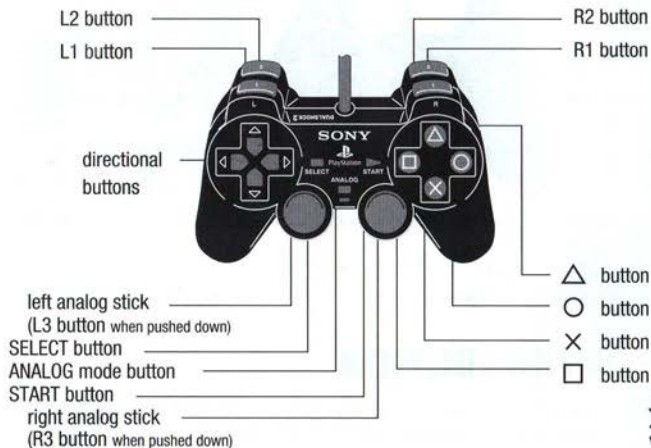
Set up your PlayStation®2 computer entertainment system according to the instructions supplied with your system. Check that the system is turned on (the on/standby indicator is green). Press the OPEN button to open the disc cover. Place the *Surf's Up*™ disc with the label side facing up in the disc holder, and then close the disc cover. Attach game controllers and other peripherals as appropriate. Follow the on-screen instructions and refer to this manual for information on using the software.

### MEMORY CARD (8MB) (FOR PLAYSTATION®2)

To save game settings and progress, insert a memory card (8MB)(for PlayStation®2) into MEMORY CARD slot 1 of your PlayStation®2 system. You can load saved game data from the same memory card or any memory card (8MB)(for PlayStation®2) containing previously saved games.

## STARTING UP

### DUALSHOCK®2 ANALOG CONTROLLER CONFIGURATIONS



### BASIC MENU CONTROLS

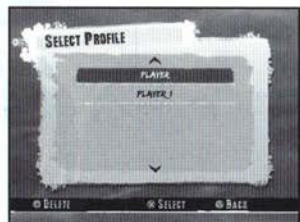
- Press the directional buttons to browse or cycle through the different options.
- Press the (X) button to select an option, go to the next screen, or change the current option.
- Within the submenu, press the (△) button to return to the previous screen.





## SELECT PROFILE

Choose Select Profile and use the left analog stick or directional buttons to move through the options and select your profile. Press the  $\otimes$  button to confirm the selection.



## MAIN MENU

Use the left analog stick or the directional buttons to navigate this menu. Press the  $\otimes$  button to select one of these options:

- **Championship:** Start competing in the championship or continue a saved game.
- **Multiplayer:** Surf against a friend at the surfing spot of your choice.
- **Leaf Sliding (unlockable):** Slide on a leaf inside the volcano's lava-made tunnels.
- **Options:** Adjust various settings. The settings you choose are saved to the current game.
- **Extras:** Watch videos and production art, enter cheat codes, and view the list of people who helped create this game.



## WORLD MAP

Use the left analog stick or the directional buttons to navigate this menu. Choose a surfing spot and press the  $\otimes$  button to zoom in to the area. Once zoomed in, you can select the level.



## PAUSE MENU

During the game, press the START button to access the Pause menu:

- **Return to Game.**
- **Restart Level.**
- **Select Music:** Select the musical track. The number of tracks will increase throughout the game.
- **Options:** Adjust various settings. The settings you choose are saved to the current game.
- **Quit Level:** Lose your current progress and return to the World Map.



## THE SURFERS

### CODY MAVERICK

Quick and brash, Cody knows what it takes to succeed, but he has also learned how to enjoy the ride.

- **Origin:** Shiverpool
- **Style:** Carver
- **Starting board:** Cody's Board



### LANI

A lifeguard and an accomplished surfer, Lani knows how to keep her cool in dicey situations.

- **Origin:** Pen Gu Island
- **Style:** Aerial
- **Starting board:** Hibiscus Board



### CHICKEN JOE

Chicken Joe is a mellow but talented surfer. He may be a little bit "out of it," but he's a surfer with moves no one's seen before.

- **Origin:** Lake Michigan
- **Style:** Acrobat
- **Starting board:** Corn Board



### RORY NUBBINS

Rory is a well-balanced surfer with personality. But nobody knows the secret to his success because no one can understand him when he speaks.

- **Origin:** Australia
- **Style:** Aerial
- **Starting board:** Aussie Blast







### **TATSUHI KOBAYASHI (UNLOCKABLE)**

Tatsuhi's success is greatly due to his technologically advanced surfboard.

- **Origin:** Japan
- **Style:** Carver
- **Starting board:** ZX-19



### **ARNOLD (UNLOCKABLE)**

Arnold is a small and cute surfer, but you shouldn't judge a book by its cover...

- **Origin:** Pen Gu Island
- **Style:** Acrobat
- **Starting board:** Cutie Baby



### **TANK (UNLOCKABLE)**

Tank is the current nine-time surf champion. He has lots of brawn and is willing to use it against anyone who stands between him and victory!

- **Origin:** Pen Gu Island
- **Style:** Brawler
- **Starting board:** Reggie Special



### **GEEK (UNLOCKABLE)**

The geek might be an out-of-shape recluse, but he has the heart of a champion and the skills to prove it.

- **Origin:** Pen Gu Island
- **Style:** Soul surfer
- **Starting board:** Barnacle Board



## BIG Z (UNLOCKABLE)

The greatest surfer of all time, Big Z is both a legend and a mystery in the surf community.

- **Origin:** Pen Gu Island
- **Style:** Soul surfer
- **Starting board:** Z Old Board



## SECRET CHARACTER (UNLOCKABLE)

This scrawny fast-talker is making his first appearance in the Reggie Belafonte Big Z Memorial Surf-Off.

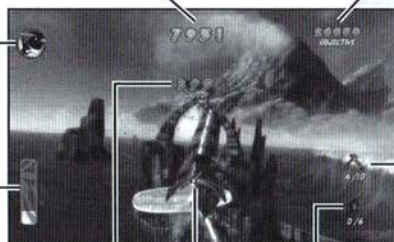
- **Origin:** Timberline
- **Style:** Brawler
- **Starting board:** Tree Hugger

## GAME SCREEN

Selected character

Total points accumulated in the map

Points objective to accomplish



Balance meter (when grinding)

Number of gates passed through

Current points (added to the total points after a successful landing or end of grind)

Number of surf idols collected

Energy bar:

- Use the speed boost to gain speed, break obstacles, and get rid of opponents.
- Activates the Stoke mode when filled, allowing you to perform stoke tricks.



## SURFING

Follow these tips and you'll be surfing in no time!

### GAINING SPEED

- Slaloming on the wave makes you gain speed! If you leave the wave, you'll go slower.

### TRICKS

- To perform tricks, jump off the wave or a ramp and gain points and energy.
- Make sure you finish your trick before landing – otherwise, you'll lose all your points.

### FREESTYLE TRICKS

- Freestyle tricks are launched with the right analog stick, giving you full control of your surfer's rotation.

### GRINDS AND FLOATERS

- To grind, land on a specific object such as a grind rail or trees.
- Once you start grinding, you have to keep your balance using the left analog stick. Keep your eyes on the balance meter!
- To perform a floater, hold the L1 button near the wave's lip.

### SPEED BOOST

- Use energy from the energy bar to launch the speed boost by pushing and holding the R1 button. If your energy bar is full, the speed boost will last longer.
- Use the speed boost to break objects and bump other surfers to gain extra points!

## STOKE MODE

- When your energy bar is full, you can also enter Stoke mode by pressing the  $\triangle$  button to perform stoke tricks.
- Stoke tricks have greater air time and faster execution and provide additional points.

## COMPLETING OBJECTIVES

- Each surfing spot has unique objectives. Completing them lets you progress in the championship. They may also give you rewards!

## TUBES

- In some surf levels you will encounter tubes. Surfing in a tube automatically fills your energy bar!
- Using the Stoke mode in a tube will enable you to perform super moves.



## SURFER AND BOARD SELECTION

Select the Character Selection and Board Selection icons on the World Map to change and customize your surfer and board.

### SURFER SELECTION

Choose from available surfers or change the surfer you're playing. To customize your surfer, press the  $\square$  button.




## SURFER CUSTOMIZATION

Turn on or off the custom item for the associated body part.

- Back
- Head
- Arm
- Wrist



## BOARD SELECTION

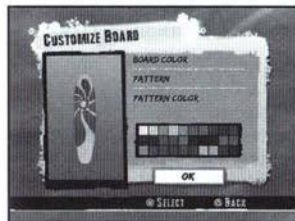
Choose your board from the list of available ones. If your surf board is customizable, press the  button to customize it.



## BOARD CUSTOMIZATION


Choose a color and pattern for your board.

- **Select base color:** Choose the main color of the board.
- **Select pattern:** Choose the pattern that will go over the board's base color.
- **Select pattern color:** Choose the pattern's color.



## LEAF SLIDING (UNLOCKABLE)

If you need a change of pace, why not try one of the leaf slides? Slide down the lava-made tunnels inside the volcano as fast as you can without falling off the track.

- Use the left analog stick to steer while sliding down.
- Use the  button to brake.



Left/Right: Turn  
(Air) Left/Right: Air Control



## ITEMS AND COLLECTIBLES

**Trophies:** Collecting trophies is the main objective of the game. They allow you to unlock new maps.



**Shells:** Shells represent optional objectives. They will unlock boards if the surfer goes through a number of gates in the level or beats the level's high score.



**Gates:** Gates are arch-like structures filled with an eerie light. Go through them to complete objectives or to get 500 extra points.



**Billboards, thin ice walls, and other fragile objects:** You can use your speed boost to break these objects and get 1,000 extra points.

**Bonus objects:** These bonus objects will multiply the points you earn for completing tricks.

- **Orange object:** Multiplies your points by 5.
- **Purple object:** Multiplies your points by 3.
- **Green object:** Multiplies your points by 2.



**Surf idols:** There are 100 surf idols in the game. Collect them to unlock leaf slide levels, art, and videos.



**Energy boost:** Grab this lightning bolt to fill your energy gauge to 100%.



**Clock bonus:** Leaf-slide bonus that stops the timer for a few seconds.

## MULTIPLAYER

This mode is available for two players. Choose Multiplayer from the Main Menu to challenge a friend in a split-screen surfing face-off! Whoever scores the most points wins!

- **Choose Level:** Choose the surf spot where you want to compete.

## EXTRAS

Visit the Extras section to access additional *Surf's Up*™ material such as unlocked artwork and movie clips from the *Surf's Up*™ movie and cheat codes.

## Register this game now and stay in the know!

It's simple: Go to [www.ubireg.com](http://www.ubireg.com) and register your product, and you will receive a coupon code good for 10% off your next purchase at the Ubisoft online store. You can also get exclusive game updates, participate in surveys, and win cool prizes! Look for the details on [www.ubi.com](http://www.ubi.com)!

Thanks,  
The Ubisoft Team

Surf's Up™  
Proof-of-Purchase



Surf's Up: TM & © 2007 Sony Pictures Animation Inc. All rights reserved. Game Software excluding Sony Elements: © 2007 Ubisoft Entertainment. All rights reserved. Ubisoft, Ubi.com, and the Ubisoft logo are trademarks of Ubisoft Entertainment in the U.S. and/or other countries.



SONY  
PICTURES  
CONSUMER  
PRODUCTS



SONY PICTURES  
animation

## NOTES





**NOTES**

**NOTES**

## TECHNICAL SUPPORT

Before contacting Ubisoft's Technical Support Department, please first read through this manual. Also browse through our FAQ listings or search the support database at our website, <http://support.ubi.com>. Here you will find the most recently updated information since the game's release.

Whenever you contact the Technical Support Department, please include the following information or have it available if you are calling:

- Full product title
- Game console you are using

### Support Over the Internet

This is the best way to find answers to common issues with our games. Our Frequently Asked Questions list is available 24 hours a day, 7 days a week and contains the most up-to-date Technical Support information available, including patches that can be downloaded free of charge. We update the Support pages on a daily basis, so please check here first for solutions to your problems: <http://support.ubi.com>.

### Contact Us by Webmail

Due to high volumes of spam, viruses, and other non-support-related contacts, we no longer offer support via standard email. However, we do provide something better, webmail. By taking your questions directly through our website, we have completely eliminated all spam contacts. As a result, we are able to respond to your questions much more quickly than we could through standard email. To send us a webmail, simply log into our site at <http://support.ubi.com>.

From this site, you will be able to enter the Ubisoft Solution Center, where you can browse through our lists of Frequently Asked Questions (FAQ), search our database of known problems and solutions, and send in a request for personal assistance from a Technical Support representative by using the **Ask a Question** feature on the Frequently Asked Questions page. Most webmail contacts are responded to within two business days.

### Contact Us by Phone

You can also contact us by phone by calling (919) 460-9778 (for our customers in Quebec we provide French language support at (866) 824-6515). Please note that this number is for technical assistance only. No gameplay hints or tips are given over the Technical Support line. When calling our Technical Support line, please make sure you are in front of your gaming system and have all of the necessary information listed above at hand.

Be advised that our Technical Support representatives are available to help you **Monday through Friday from 9 am - 9 pm Eastern Time** (French language support available from 7 am - 4 pm EST).

While we do not charge for technical support, normal long distance charges apply. To avoid long distance charges, or to contact a support representative directly after these hours, please feel free to browse our Frequently Asked Questions lists or to send us a webmail. Webmail questions usually receive a response within two business days.

### Contact Us by Standard Mail

If all else fails you can write to us at:

Ubisoft Technical Support • 3200 Gateway Centre Blvd. • Suite 100 • Morrisville, NC 27560

### Return Policy

Please do not send any game returns directly to Ubisoft before contacting Technical Support. It is our policy that game returns must be dealt with by the retailer or online site where you purchased the product. If you have a damaged or scratched CD, please visit the FAQ listing for your game and get the latest replacement policy and pricing. We will not accept unsolicited returns/exchanges without prior approval and an RMA (Return Materials Authorization) number from a support representative.

## WARRANTY

Ubisoft warrants to the original purchaser of its products that the products will be free from defects in materials and workmanship for a period of ninety (90) days from the date of purchase. Ubisoft products are sold "as is," without any expressed or implied warranties of any kind, and Ubisoft is not liable for any losses or damages of any kind resulting from use of its products. Ubisoft agrees for a period of ninety (90) days to either replace defective product free of charge provided you return the defective item with dated proof of purchase to the store from which the product was originally purchased or repair or replace the defective product at its option free of charge, when accompanied with a proof of purchase and sent to our offices postage prepaid. This warranty is not applicable to normal wear and tear, and shall be void if the defect in the product is found to be as a result of abuse, unreasonable use, mistreatment, or neglect of the product.

### LIMITATIONS

This warranty is in lieu of all other warranties and no other representations or claims of any nature shall be binding on, or obligate Ubisoft. Any implied warranties applicable to Ubisoft products, including warranties of merchantability and fitness for a particular purpose, are limited to the ninety (90) day period described above. In no event will Ubisoft be liable for any special, incidental, or consequential damages resulting from possession, use, or malfunction of Ubisoft products. Some states do not allow limitations as to how long an implied warranty lasts and/or exclusions or limitations of incidental or consequential damages. So the above limitations and/or exclusions of liability may not apply to you. This warranty gives you specific rights, and you may also have other rights that vary from state to state.

### NOTICE

Ubisoft reserves the right to make improvements in its products at any time and without notice.

### REFUNDS

Ubisoft cannot provide refunds or otherwise process returns for credit of any kind other than an identical product replacement. Any product refund request must occur at the place of purchase, as the individual retail outlets set their own refund policy. This policy covers identical product replacements only.

### PRODUCT/DOCUMENTATION REPLACEMENTS

Please contact a Ubisoft Technical Support Representative directly before sending your product to us. In many cases, a replacement is not the best solution. Our Support Representatives will help you determine if a replacement is necessary or available. You will need to first acquire an RMA (Return Materials Authorization) number to process your return or replacement. Without an RMA number from a support representative, your replacement request will not be processed.

#### IF WE DETERMINE A RETURN OR REPLACEMENT IS NECESSARY:

**Within the 90-Day Warranty Period:** Please return the product (media only) along with a copy of the original sales receipt, showing the date of purchase, a brief description of the difficulty you are experiencing including your name, address (no PO boxes), and phone number to the address below. If the product was damaged through misuse or accident (cracks, scratches), or if you do not have a dated sales receipt, then this 90-day warranty is rendered void and you will need to follow the instructions for returns after the 90-day warranty period.

**After the 90-Day Warranty Period:** Please return the product (media only) along with a check or money order for the amount corresponding to your product (see replacement fees below) made payable to Ubisoft, a brief description of the difficulty you are experiencing, including your name, address (no PO boxes), RMA number, and phone number to the address below.

#### REPLACEMENT FEES

Our most recent replacement fee schedule is available online. Please visit <http://support.ubi.com> for an updated price list.

#### WARRANTY ADDRESS AND CONTACT INFORMATION

Phone: 919-460-9778. Hours: 9am-9pm (EST), M-F

Address: Ubisoft Support  
3200 Gateway Centre Blvd.  
Suite 100  
Morrisville, NC 27560

Please use a traceable delivery method when sending products to Ubisoft.

To order Ubisoft products in the United States, please call toll free 888-824-7038.