

X-MEN™

NEXT DIMENSION



TEEN
T
CONTENT RATED BY
ESRB

EmuMovies

MARVEL

ACTIVISION

WARNING: READ BEFORE USING YOUR PLAYSTATION®2 COMPUTER ENTERTAINMENT SYSTEM.

A very small percentage of individuals may experience epileptic seizures when exposed to certain light patterns or flashing lights. Exposure to certain patterns or backgrounds on a television screen or while playing video games, including games played on the PlayStation®2 console, may induce an epileptic seizure in these individuals. Certain conditions may induce previously undetected epileptic symptoms even in persons who have no history of prior seizures or epilepsy. If you, or anyone in your family, has an epileptic condition, consult your physician prior to playing. If you experience any of the following symptoms while playing a video game – dizziness, altered vision, eye or muscle twitches, loss of awareness, disorientation, any involuntary movement, or convulsions – **IMMEDIATELY** discontinue use and consult your physician before resuming play.

WARNING TO OWNERS OF PROJECTION TELEVISIONS:

Do not connect your PlayStation®2 console to a projection TV without first consulting the user manual for your projection TV, unless it is of the LCD type. Otherwise, it may permanently damage your TV screen.

USE OF UNAUTHORIZED PRODUCT:

The use of software or peripherals not authorized by Sony Computer Entertainment America may damage your console and/or invalidate your warranty. Only official or licensed peripherals should be used in the controller ports or memory card slots.

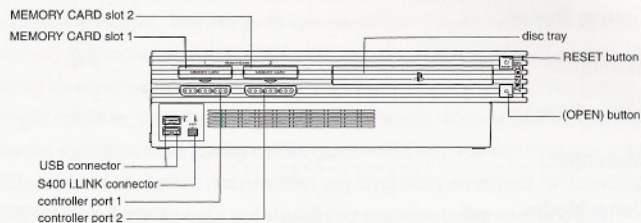
HANDLING YOUR PLAYSTATION®2 FORMAT DISC:

- This disc is intended for use only with PlayStation®2 consoles with the NTSC U/C designation.
- Do not bend it, crush it or submerge it in liquids.
- Do not leave it in direct sunlight or near a radiator or other source of heat.
- Be sure to take an occasional rest break during extended play.
- Keep this compact disc clean. Always hold the disc by the edges and keep it in its protective case when not in use. Clean the disc with a lint-free, soft, dry cloth, wiping in straight lines from center to outer edge. Never use solvents or abrasive cleaners.

CONTENTS

Getting Started	2
Starting the Game	3
Game Controls	3
Main Menu	5
Game Modes	5
Pause Menu	10
On-Screen Display	11
Gameplay	13
Options	15
Characters	18
Credits	24
Customer Support	27
Software License Agreement	29

GETTING STARTED



Set up your PlayStation®2 computer entertainment system according to the instructions in its Instruction Manual. Make sure the MAIN POWER switch (located on the back of the console) is turned on. Press the **RESET** button. When the power indicator lights up, press the **Open** button and the disc tray will open. Place the *X-Men™ Next Dimension* disc on the disc tray with the label side facing up. Press the **Open** button again and the disc tray will close. Attach game controllers and other peripherals, as appropriate. Follow on-screen instructions and refer to this manual for information on using the software.

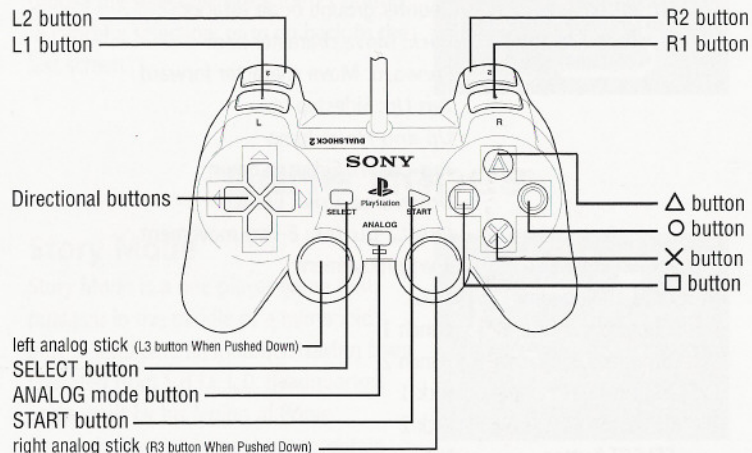
Memory Card

X-Men™ Next Dimension requires a memory card (8 MB) (for PlayStation®2) to save your games. A saved game's data takes up 140 KB. You can obtain a memory card through the retailer where you purchased your PlayStation®2 game console or this game.

To access your memory card (8 MB) (for PlayStation®2), insert your memory card (8 MB) (for PlayStation®2) into MEMORY CARD slot 1.

STARTING THE GAME

DUALSHOCK®2 analog controller CONFIGURATIONS



GAME CONTROLS

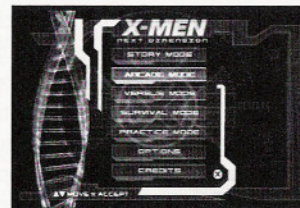
All references to button selection in this manual refer to the default controller configuration. Selecting CONTROLLER from the Options Menu allows the default settings to be changed, as well as the ability to turn the vibration function ON or OFF.

Game Controls (continued)

- L1 buttonPower transfer
L2 button8-way movement
R1 buttonThrow;
Initiate object interaction
R2 buttonCounter ground or air attacks
directional buttons*Back*: Move character back
Forward: Move character forward
Tap Up: Sidestep up
Up and Hold: Jump
Tap Down: Sidestep down
Down and Hold: Crouch
Plus L2 button: 8-way movement
left analog stick8-way movement
right analog stickN.A.
□ buttonPunch 1
△ buttonPunch 2
× buttonKick 1
○ buttonKick 2
SELECT buttonN.A.
START buttonPause Menu

MAIN MENU

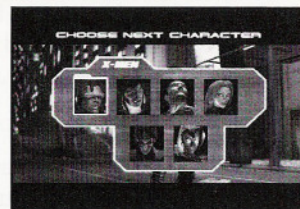
Press **up** or **down** on the **directional buttons** to highlight the desired menu option, and then press the **X** button to choose the selection. Press the **△** button to cancel a selection, or to go back to the last screen.



GAME MODES

Story Mode

Story Mode is a one-player game that puts you in the middle of a humanoid's plot to eradicate all mutants. Having been liberated from S.H.I.E.L.D. headquarters and rebuilt by his legion of Prime Sentinels, Bastion has set out to obtain the one man that can guarantee his victory, the X-Men called Forge. Now, the race is on as Forge's teammates seek to rescue their captured comrade before Bastion can coax secrets from him that are capable of destroying all mutant-kind. In order to do this, the X-Men must ally themselves with their greatest of enemies, the Brotherhood of Mutants and their cunning leader, Magneto. Will the combined might of Earth's most powerful mutants be enough to prevent an impending mutant extinction?



As key stages of the story are reached, you can choose a fighter from a set number of characters. This set of characters will vary from stage to stage. Simply use the directional buttons to make a selection, and press the **X** button to use the selected character until the next key stage is reached. Keep in mind, certain sections of Story Mode require that a particular character be played, so there will not be a selection screen at these times.

Arcade Mode

The Arcade Mode experience is a one-player game where a series of ten matches is fought against the CPU. The opponents get progressively more difficult to defeat as you battle towards the final match. At any time during Arcade Mode, another player can challenge you to a Versus Mode match by pressing the START button on the other controller.

Versus Mode

Versus Mode is a two-player game designed for one-on-one combat. There is no limit to the number of matches that can be fought. Two controllers must be plugged in for this mode.

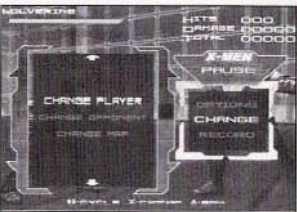
Survival Mode

Survival Mode is another one-player game. Unlike Arcade Mode, here you test your fighting abilities against a never-ending series of enemies and the goal is to achieve as many wins as possible with only one life bar. For each match won, you will be rewarded with extra health.

Practice Mode

Practice Mode allows you to learn a character's moves in a controlled environment. As attacks are executed against the opponent, the actual controller sequence, total hits, damage, and total damage are displayed on the screen. There is also no time limit, so you can practice as long as you need to.

There are a few items that can be toggled while practicing. This includes the ability to change the current player, opponent, or map. (Hit points shown are based off of 30,000 hit points.)



Practice Mode Options

To Change the Player:

- Press the **START** button to display the Pause Menu.
- Use the **directional buttons** to select **CHANGE**, and then press the **X** button.
- Use the **directional buttons** to select **CHANGE PLAYER**, and then press the **X** button.
- Use the **directional buttons** to select a new player, and then press the **X** button.
- Use the **directional buttons** to select **YES** when asked to confirm the selection. Otherwise, select **NO**, and choose another player.

To Change the Opponent:

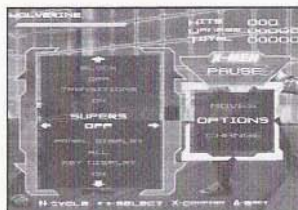
- Press the **START** button to display the Pause Menu.
- Use the **directional buttons** to select **CHANGE**, and then press the **X** button.
- Use the **directional buttons** to select **CHANGE OPPONENT**, and then press the **X** button.
- Use the **directional buttons** to select a new opponent, and then press the **X** button.
- Use the **directional buttons** to select **YES** when asked to confirm the selection. Otherwise, select **NO**, and choose another opponent.

To Change the Map:

- Press the **START** button to display the Pause Menu.
- Use the **directional buttons** to select **CHANGE**, and then press the **X** button.
- Use the **directional buttons** to select **CHANGE MAP**, and then press the **X** button.
- Use the **directional buttons** to select a new map, and then press the **X** button.
- Use the **directional buttons** to select **YES** when asked to confirm the selection. Otherwise, select **NO**, and choose another map.

There are also an abundance of options that you can toggle to customize the learning environment. Below is a list of options:

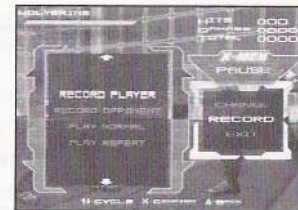
- Supers – supers can be set to infinite, all four meters completely filled just once, or set to default
- Panel Display – the super meters can be enabled or disabled in the panel
- Key Display – turn on or off the display of buttons being pressed
- Dummy – the dummy can be setup to be controlled by a human or the A.I.
- Action – the dummy can be setup to perform a specific action (e.g. counter, jump, block, etc.)
- Block – the dummy can be setup to block punches, or kicks
- Transitions – animated sequences showing the opponent being knocked into the next section



To Toggle Options:

1. Press the **START** button to display the Pause Menu.
2. Use the **directional buttons** to select **OPTIONS**, and then press the **X** button.
3. Use the **directional buttons** to select an option.
4. Press **left** or **right** on the **directional buttons** to change the option.
5. Press the **X** button to accept and save the options changed and return to the Pause Menu.
6. Press the **Δ** button to return to the Pause Menu (none of the changes will be saved).
7. Press the **Δ** button or use the **directional buttons** to select **RESUME**, and then press the **X** button to return to the game.

You also have the ability to record and playback your moves or the opponent's moves. (There is a 15 second maximum to all recordings.)



To Record and Playback Your Moves:

1. Press the **START** button to display the Pause Menu.
2. Use the **directional buttons** to select **RECORD**, and then press the **X** button.
3. Use the **directional buttons** to select **RECORD PLAYER**, and then press the **X** button.
4. Press the **SELECT** button to start recording.
5. Execute a sequence of moves.
6. Press the **SELECT** button to stop recording.
7. Press the **START** button to display the Pause Menu.
8. Use the **directional buttons** to select **RECORD**, and then press the **X** button.

To play the sequence once, use the **directional buttons** to select **PLAY NORMAL**, and then press the **X** button. To repeat the sequence, use the **directional buttons** to select **PLAY REPEAT**, and then press the **X** button. Afterwards, press the **SELECT** button to stop playing the sequence.

To Record and Playback the Opponent's Moves:

1. Press the **START** button to display the Pause Menu.
2. Use the **directional buttons** to select **RECORD**, and then press the **X** button.
3. Use the **directional buttons** to select **RECORD OPPONENT**, and then press the **X** button.
4. Press the **SELECT** button to start recording.
5. Allow the opponent to execute a sequence of moves.
6. Press the **SELECT** button to stop recording.
7. Press the **START** button to display the Pause Menu.

- Use the **directional buttons** to select **RECORD**, and then press the **X** button.

To play the sequence once, use the **directional buttons** to select **PLAY NORMAL**, and then press the **X** button. To repeat the sequence, use the directional buttons to select **PLAY REPEAT**, and then press the **X** button. Afterwards, press the **SELECT** button to stop playing the sequence.

PAUSE MENU

Press the **START** button during gameplay to display the Pause Menu. Use the directional buttons to select a menu item, and then press the **X** button.

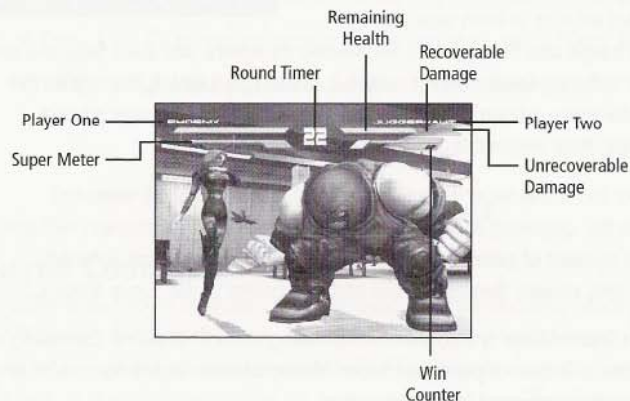
- Resume – return to gameplay.
- Moves – displays the list of moves for the player who hit the **START** button. (All listings read as though the character is on the left side of the screen.)
- Exit – terminate the existing match and return to the Character Selection Screen for the same game mode.



Practice Mode will have these additional menu items:

- Options – parameters for customizing the Practice Mode environment.
- Change – ability to change the existing player, opponent, or map.
- Record – feature of recording player or opponent's sequence of moves, and playing it back.

ON-SCREEN DISPLAY



Health Meter

The Health Meter displays the amount of health each character has left for the current match. Green indicates remaining health, red indicates recoverable damage, and the empty section of the meter indicates damage that is unrecoverable. Avoiding damage for a period of time will restore the recoverable (red portion on the health meter) health. Otherwise, the recoverable damage will convert to permanent damage.

Round Timer

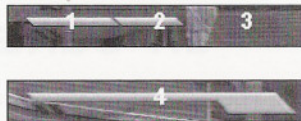
The Round Timer shows the remaining time in a match. If the timer runs out, victory is given to the character with the most remaining health. If both players have the same amount of health at the end of the round, a Draw is called.

Win Counter

The Win Counter indicates the number of rounds each character has won. The number of slots corresponds to the number of rounds needed to win the match.

Super Meters

Each character has a set of four over-the-top signature moves that surpass standard attacks in both their damage and strategic use. These moves are known as supers, and each falls into one of four different levels: Level 1, Level 2, Level 3, or Level 4. The higher the level, the more advantageous the super is. Before these supers can be executed, their respective Super Meter must be filled.



In order to fill the Super Meters, successful attacks must be executed against the opponent. Each punch, kick, or projectile that connect will add a certain number of points across the level 1, level 2, and level 3 meters. Performing certain throws will not add any points to the Super Meters.

Once a Super Meter is full, the corresponding super is enabled. Executing the super will then deplete that Super Meter, whether it was successful or not (e.g. the opponent blocks the super).

Managing the Super Meters

You can easily transfer power from one Super Meter to another. This is useful for quickly activating one super if there's enough combined power across the meters to fill the desired Super Meter, or executing the same super numerous times if there's plenty of power across the meters.

For Player 1:

- Press **L1** + **□** button to transfer power into the Level 1 Super Meter.
- Press **L1** + **△** button to transfer power into the Level 2 Super Meter.
- Press **L1** + **○** button to transfer power into the Level 3 Super Meter.
- All three Super Meters need to be filled up to activate the Level 4 super.

For Player 2:

- Press **L1** + **○** button to transfer power into the Level 1 Super Meter.
- Press **L1** + **△** button to transfer power into the Level 2 Super Meter.
- Press **L1** + **□** button to transfer power into the Level 3 Super Meter.
- All three Super Meters need to be filled up to activate the Level 4 super.

GAMEPLAY

Aerial Combat

Fighting is no longer relegated to the ground, but can also take place in the air. You must first launch an opponent into the air, jump up, and then execute a combo. Each character can execute a special or super while in the air, and air throws (pressing the **R1** button in the air) have been added for certain characters. You will know that you have successfully initiated aerial combat when you see a short sequence of your fighter jumping up towards your opponent.

To Initiate Aerial Combat:

- Execute a launch move.
- Immediately press **up** on the directional buttons.
- After the character jumps up into the air, execute a sequence of attacks.

Flying

Flying characters have the ability to remain suspended in the air for a short period of time. While in the air, these characters can navigate in 3D (e.g., air 8-way movement, air sidestep), and perform numerous attacks. To fly, simply jump in the air, and press the **L2** button. Once, the timer counts down to 0, the character will fall to the ground. Double tapping the **L2** button while flying will also cause the character to return to the ground.

Object Interaction

Characters can either throw opponents on top of specific objects, or smash their opponent's head into specific objects. To smash an opponent's head into an object, stand in between the opponent and the object, and then press the throw button (the **R1** button). To throw an opponent on top of an object, make sure that the opponent's back is facing the object, and then press the throw button. A few character specific forms have been thrown into the mix.

Phoenix: Use her telekinetic powers to pick up objects and throw them at her opponent. Navigate Phoenix near a set of objects and the opponent, and then press the throw button.

Beast: Use his acrobatic abilities to kick his opponent's head into a basketball pole or Egyptian column. Navigate Beast near a pole and the opponent, and then press the throw button.

Toad: Use his tongue to smash his opponent into a basketball pole. Navigate Toad near a pole and the opponent, and then press the throw button.

Counter System

The counter system is a mechanism for thwarting an opponent's attack. Press the **R2** button and the proper direction on the directional buttons to execute a counter. Counters can be used during ground and aerial combat.

Counter Punches: **R2** + forward on the directional buttons

Counter Kicks: **R2** + back on the directional buttons

Counter Crouch Attacks: **R2** + down on the directional buttons

Tech Rolls

Once, a character is knocked down, a tech roll can be performed by quickly pressing any directional buttons. By pressing forward, the character will roll towards the opponent. Pressing back will cause the character to roll away from the opponent. Pressing up or down will make the character roll to the side.

Recovery Attacks

A character can also execute a recovery attack upon being knocked down by pressing the **Δ** button. Doing so will cause the character to quickly return an attack, instead of waiting to stand up in the default fighting stance. These are also known as "wake up" attacks.

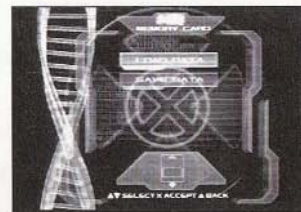
OPTIONS



Use the directional buttons to select the option, and then press the **X** button.

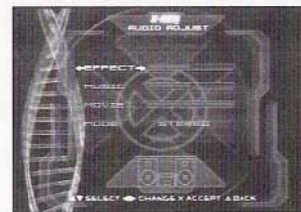
Memory Card

- Select **LOAD DATA** to load a saved game from the memory card (8 MB) (for PlayStation®2).
- Select **SAVE DATA** to save the current game to the memory card (8 MB) (for PlayStation®2). You must have 140 KB free space in order to save a game.



Audio Adjust

- Press **directional buttons left** or **right** to decrease or increase the volume of the sound effects.
- Press **directional buttons left** or **right** to decrease or increase the volume of the music.
- Press **directional buttons left** or **right** to decrease or increase the volume of the movies.
- Press **directional buttons left** or **right** to select mono, stereo, or Dolby Prologic mode.



Screen Adjust

- Press **directional buttons up** to move the screen up.
- Press **directional buttons down** to move the screen down.
- Press **directional buttons left** to move the screen left.
- Press **directional buttons right** to move the screen right.



Controller

The controller configuration can be set to the default configuration, one of three other presets, or customized for each controller.

To Change the Preset:

- Use the **directional buttons** to select **CURRENT SET**.
- Press **directional buttons left** or **right** to select a preset.



To Create a Custom Preset:

- Use the **directional buttons** to select **CURRENT SET**.
- Press **left** or **right** on the **directional buttons** to select **CUSTOM** for the CURRENT SET.
- Use the **directional buttons** to select **EDIT**, and press the **X** button.
- For each action, press the desired button to map it to.

To Adjust the Vibration:

- Use the **directional buttons** to select **VIBRATION**
- Press **directional buttons left** or **right** to turn it **ON** or **OFF**.

Assets

This screen shows the items that have been unlocked in the game. One can also view movies from Arcade Mode or Story Mode that have been unlocked by using the directional buttons to select the movie and pressing the **X** button.

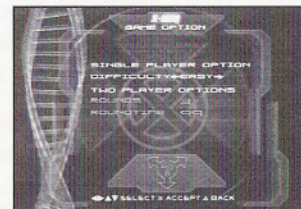


Game Option

Options can be changed for a one or two player game.

Single Player Option

- Press **directional buttons left** or **right** to change the AI difficulty.



Two Player Options

- Press **directional buttons left** or **right** to change the number of rounds.
- Press **directional buttons left** or **right** to change the round time.

CHARACTERS

Cyclops™

Real Name: Scott Summers

Powers and Abilities: Through the use of his visor with ruby red quartz lenses, he can unleash a concussive beam of various magnitudes against opponents. A strong, medium speed fighter, Cyclops can combine his beam with powerful punches and kicks for devastating results. He's not the X-Men's team leader for nothing.



Phoenix™

Real Name: Jean Grey-Summers

Powers and Abilities: A flying character that can launch fiery projectiles at will and use telekinesis to levitate objects and hurl them against her enemies. Phoenix also has telepathic capabilities that can be used both to confuse and attack opponents. Her fire may look pretty, but get too close and you will "feel the burn."



Wolverine™

Real Name: Logan

Powers and Abilities: Wolverine possesses razor sharp adamantium claws, and a natural gift for rapid healing, which allows him to recover from extensive injuries. These attributes, along with his fast, powerful combos make Wolverine the consummate melee fighter.



Gambit™

Real Name: Remy Entienne Lebeau

Powers and Abilities: Ability to transform the potential energy of any object and convert it into kinetic energy. When the object is hurled at an opponent, this energy explodes upon impact. Being the reformed thief and scoundrel that he is, Gambit's preferred weapon is a deck of playing cards and he always has an ace up his sleeve.



Rogue™

Real Name: Unknown

Powers and Abilities: A flying character that has superhuman strength and the ability to absorb the powers of any being through a "Southern Kiss." This power can then be turned against the opponent during combat. Be careful your power doesn't become her power.



Nightcrawler™

Real Name: Kurt Wagner

Powers and Abilities: The ability to teleport himself along with another person to a different location. During the process, Nightcrawler actually travels to another dimension, and then returns back to the original dimension, but at a different place. In combat, this allows Nightcrawler to instantly "bamf" towards his enemy, making him an unpredictable and deadly opponent.



Psylocke™

Real Name: Elizabeth "Betsy" Braddock

Powers and Abilities: On top of excelling in martial arts, Psylocke can use her powers to form a "psychic dagger" that can be contrived effortlessly in combat. What Psylocke lacks in size, she more than makes up for with speed. Not only does she have quick kick and punch combinations, which take advantage of her psychic knife, Psylocke also has fast evasion moves. Hit her if you can.



Storm™

Real Name: Ororo Munroe

Powers and Abilities: A flying character that possesses the psionic ability to control the weather in a specific area. This allows her to unleash lightning bolts, powerful currents of wind, and a hail storm against those that stand against her. Enjoy the calm while you can.



Beast™

Real Name: Henry "Hank" P. McCoy

Powers and Abilities: An agile character possessing superhuman strength, who can literally dance around his opponents through his display of acrobatics. With these attributes, Beast's combinations are unpredictable and can be tricky to avoid or defend against.



Havok™

Real Name: Alexander Summers

Powers and Abilities: Able to absorb ambient cosmic energy, transform it, and release it as waves of plasma beams. Not only can Havok shoot these beams at his opponents, he can unleash it as a huge ball of energy. That, combined with his powerful punch and kick combos make him as tough as his brother, Cyclops.



Forge™

Real Name: Unknown

Powers and Abilities: Has a special talent for inventing any mechanical device his mind can conceive, along with mystical abilities from his Native American roots. The result is a gun that can fire different types of attacks and a fearsome super that science can never explain.



Lady Deathstrike™

Real Name: Yuriko Oyama

Powers and Abilities: Her cybernetic implants enhance her strength and fighting distance, while her adamantium claws can tear through most materials. Deathstrike can issue deadly combos and throws close in, while surprising her opponents with a long-range attack using her extending arms.



Magneto™

Real Name: Erick Magnus Lencherr

Powers and Abilities: Possesses the ability to control a broad range of electromagnetic forces. These forces can be used to levitate opponents, or they can be focused into beams of electromagnetic energy. There's a reason why they call him the master of magnetism.



Juggernaut™

Real Name: Cain Marko

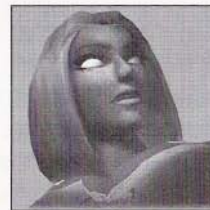
Powers and Abilities: Invulnerable to most forms of attacks, his brute strength can smash his opponents to pieces. His crushing combinations and throws force his opponents to be very careful in how they engage him, making him nearly unstoppable.



Mystique™

Real Name: Raven Darkholme

Powers and Abilities: Her psionic abilities allow her to change her physical shape and the clothes she is wearing into any form she chooses. Armed with a gun that emits powerful plasma beams, she dominates the playing field with a sultry flare.



Sabretooth™

Real Name: Victor Creed

Powers and Abilities: Possesses razor sharp claws and teeth that can rip through many substances and a superhuman healing factor that allows him to recover quickly from most attacks. Sabretooth is large and powerful, but unlike many of the other larger characters, he has speed as well.



Toad™

Real Name: Mortimer Toynbee

Powers and Abilities: A very fast and agile character. He can use his tongue to inflict damage, and hurl opponents around with ease. Toad's bouncy nature and speed make him difficult to hit and grant him many opportunities to unleash his effective, albeit sometimes crass, attacks. Don't let his spit get into your eyes.



Bastion™

Real Name: Unknown

Powers and Abilities: This humanoid was designed to destroy all mutants, and his superhuman strength and mutagenic power-dampening device make him a strong adversary. He will not rest until every last mutant has been destroyed.



Prime Sentinel Male™

Real Name: Unknown

Powers and Abilities: Cybernetic and nano technology provide this former human with superhuman strength and the ability to release powerful plasma beams. Armed with the mutagenic power-dampening device, he can rob a mutant of their powers. The male Sentinel is large, and many of his attacks are not fast, but if they hit you, watch out!



Prime Sentinel Female™

Real Name: Unknown

Powers and Abilities: The female version also has cybernetic and nano technology that allows her to exceed the strength of mere humans, and she also has powerful plasma beam and the mutagenic power-dampening device at her disposal. One major difference from her male counterpart is her ability to fly.



CREDITS

Paradox Development

President/CEO
Christine Hsu

Director of Studio
James Maxwell

Director of Operations
Teresa Chang

Producer
Barclay Smith

Lead Programmer
Peter Jeffries

Technical Director
David "Ollie" Ollman

Programmers
Ben Kutcher
Yong Li
Ian Bullard
Sam Baker
Mark Miller

Art Director
Paul Interrante

Lead Artists
Damon DuBois
Kristian Hedman

Artists
Jeff Wand
Mark Lappin
Martin Kilner
Louis Garcia
Timothy McGrath
Takashi Matsubara
Tom McGuire

Lead Animator
Cory Barlog

Animators
James Che
William Lykke
Abigail Goldsmith
Michael Carr
Bruno Velazquez
Sean Gilley

Lead Designer
Eric Williams

Designers
Adam Puhl
Mark "FlipMeign" Acero
John Edwards
Derek Daniels
Omar Kendall

Lead Level Designer
Bill McDonald

Level Designers
Clive Burdon
Mike Bilodeau

Sound
Todd Piperi

QA Lead
Edwin De Nicholas

QA Tester
Charles Burton

Intern
Peter Olofsson

Special Thanks
Moumine Ballo, Josh Been,
Jennifer Bullard,
Kristin Burbidge,
Hun Chung, Miranda Collins,
Wendy Davis, Ryan Den,
Brienne Drouhard, Xheryl
Durham, Jonathan Evans,

Allen Fernandez, Fifi,
David Frenkel, David Gautrey,
Ginger, Ellis Goodson,
James Guintu, Allan Hayburn,
Milton Mariscal, Jason Maynard,
Mogwai, Pom Pom, Richie Romero,
Elena Scott, Mike Scott,
Beth Sleven, Patrick Strand,
Romalis Taylor, Eri Fujita,
and all of our families

Activision

Producer
Christian Astillero

Associate Producer
Eric Grossman

V.P. North America Studios
Murali Tegulapalle

E.V.P. Worldwide Studios
Lawrence Goldberg

*E.V.P. Global Publ
Brand Manager*
Kathy Vrabeck

Executive Producer
Chris Archer

V.P. Global Brand Management
Tricia Bertero

*Director of Global Brand
Management*
John Heinecke

Global Brand Manager
Victoria Cushey

Associate Brand Manager
Matt Geyer

V.P. Creative Services
Denise Walsh

Creative Services Manager
Jill Barry

Publicist
Lisa Fields

Legal
George Rose
Michael Hand
Mike Larson
David Kay

Vice President, QA & CS
Jim Summers

QA Project Lead
Alex Coleman

QA Senior Project Lead
Ben DeGuzman

QA Console Manager
Joe Favazza

QA Floor Lead
Aaron Camacho

QA Testers
Jim Corbin
Erik Estrada
Orlando Hawkins
Francis Jimenez
Brian Jury

Justin Kaehler
Kevin Kochakji
Michael Lashever
Niles Livingston III
Alex Ortiz
Mike Ryan
Anthony Saunders
Ubong Stowe
Marc Villanueva
Wayne Williams
Yoonsang Yu

Production Testers
Jeremy Evangelista
Dustin Thomas

Customer Support

Customer Support Manager
Bob McPherson

Customer Support Leads
Rob Lim, Gary Bolduc, Mike Hill

Voice Talent

Patrick Stewart, Jenette Goldstein,
Tony Daniels, Don Morrow,
Jennifer Hale, Sybyl Walker,
Julianne Grossman, Carlos Ferro,
Fred Tatasciore, Tim Harrison,
Jim Wise, Mark Klasterin,
Wally Wingert, Alan Dale,
Luray Cooper, Masasa,
Gwendoline Yeo
as Lady Deathstrike

Story Mode Script
Todd Jefferson

*Story Mode CG and Costumes 1A,
2A, 3A, 1B, 2B, 3B.*
Trearor Brothers Animation

Additional CG for Intro Movie
Aurum Digital

Soundtrack
PCB Productions

Sound Designer
Sounddesigner.com

Special Thanks

Ron Doornink, Robert Kotick,
Marc Turndorf, Jay Gordon,
Matt Powers, Gene Bahng,
Joe Shackelford, Juan Valdes,
Brian Clarke, Bryant Bustamante,
Blaine Christine, Peter Muravez,
Brian Pass, Ryan Rucinski,
Jimmie Hudson, David Dalzell,
James Mayeda, Franz Boehm,
Jennifer Daniels, Jeremy Grapner,
Ron Koo, Maryanne Lataif,

Michelle Nino, Darek Connole,
Chris Hepburn, Matt Stubbs,
Kenny Ramirez, Stacy Sooter,
Salvador La Rocca, Heather Sulz,
Nick "Darkslide" Favazza,
Margarita Umil, Jason Wong,
Tim Vanlaw, Nadine Theuzillot,
Marilena Rixford, Chad Siedhoff,
Jennifer Vitiello, Willie Bolton,
Jeremy Gage, Adam Hartsfield,
Indra Gunawan, Mike Beck,
Marco Scatagliani

Marvel Enterprises, Inc.

www.marvel.com

Chief Operating Officer/President
Bill Jemas

Editor-in-Chief
Joe Quesada

*Creative Development/
Business & Legal Affairs*
Seth Lehman
Josh Silverman
Ari Arad
Carl "Sue 'em" Suecoff
John Stires

**Packaging &
Manual Design**
Ignited Minds, LLC

CUSTOMER SUPPORT

NOTE: Please do not contact Customer Support for hints/codes/cheats; only technical issues.

Internet/E-mail: <http://www.activision.com/support>

Our support section of the web has the most up-to-date information available. We update the support pages daily so please check here first for solutions. If you cannot find an answer to your issue you can email us using the support form. A response may take anywhere from 24-72 hours depending on the volume of messages we receive and the nature of your problem.

NOTE: Internet/e-mail support is handled in English only.

Phone: (310) 255-2050

You can call our 24-hour voice-mail system for answers to our most frequently asked questions at the above number. Contact a Customer Support representative at the same number between the hours of 9:00 am and 5:00 pm (Pacific Time), Monday through Friday, except holidays.

Please do not send any game returns directly to Activision without first contacting Customer Support.

It is our policy that game returns/refunds must be dealt with by the retailer or online site where you purchased the product. Please see the Limited Warranty contained within our Software License Agreement for warranty replacements.

3 FOR FREE!*



Get a FREE 3-MONTH SUBSCRIPTION to
the all new, all exciting **ULTIMATE SPIDER-MAN!**
Action and Adventure in the Mighty Marvel Manner!

Call Toll Free 1-800-217-9158

K29PR1
MARVEL
WWW.MARVEL.COM

*Plus \$3.00 for shipping & handling. Offer good thru 6/30/03

Software License Agreement

USE OF THIS PROGRAM IS SUBJECT TO THE SOFTWARE LICENSE TERMS SET FORTH BELOW. "PROGRAM" INCLUDES THE SOFTWARE INCLUDED WITH THIS AGREEMENT, THE ASSOCIATED MEDIA, ANY PRINTED MATERIALS, AND ANY ON-LINE OR ELECTRONIC DOCUMENTATION, AND ANY AND ALL COPIES AND DERIVATIVE WORKS OF SUCH SOFTWARE AND MATERIALS. BY OPENING THIS PACKAGE, AND/OR USING THE PROGRAM, YOU ACCEPT THE TERMS OF THIS LICENSE WITH ACTIVISION, INC. ("ACTIVISION").

LIMITED USE LICENSE. Activision grants you the non-exclusive, non-transferable, limited right and license to use one copy of this Program solely and exclusively for your personal use. All rights not specifically granted under this Agreement are reserved by Activision. The Program is licensed, not sold. Your license confers no title or ownership in this Program and should not be construed as a sale of any rights in this Program.

OWNERSHIP. All title, ownership rights and intellectual property rights in and to this Program and any and all copies thereof (including but not limited to any titles, computer code, themes, objects, characters, character names, stories, dialog, catch phrases, locations, concepts, artwork, animation, sounds, musical compositions, audio-visual effects, methods of operation, moral rights, and any related documentation, incorporated into this Program) are owned by Activision or its licensors. This Program is protected by the copyright laws of the United States, international copyright treaties and conventions and other laws. This Program contains certain licensed materials and Activision's licensors may protect their rights in the event of any violation of this Agreement.

YOU SHALL NOT:

- Exploit this Program or any of its parts commercially, including but not limited to use at a cyber cafe, computer gaming center or any other location-based site. Activision may offer a separate Site License Agreement to permit you to make this Program available for commercial use; see the contact information below.
- Sell, rent, lease, license, distribute or otherwise transfer this Program, or any copies of this Program, without the express prior written consent of Activision.
- Reverse engineer, derive source code, modify, decompile, disassemble, or create derivative works of this Program, in whole or in part.
- Remove, disable or circumvent any proprietary notices or labels contained on or within the Program.
- Export or re-export this Program or any copy or adaptation in violation of any applicable laws or regulations.

LIMITED WARRANTY. Activision warrants to the original consumer purchaser of this Program that the recording medium on which the Program is recorded will be free from defects in material and workmanship for 90 days from the date of purchase. If the recording medium is found to have any implied warranties prescribed by statute are expressly limited to the 90-day period described above.

EXCEPT AS SET FORTH ABOVE, THIS WARRANTY IS IN LIEU OF ALL OTHER WARRANTIES, WHETHER ORAL OR WRITTEN, EXPRESS OR IMPLIED, INCLUDING ANY WARRANTY OF MERCHANTABILITY, FITNESS FOR A PARTICULAR PURPOSE OR NON-INFRINGEMENT, AND NO OTHER REPRESENTATIONS OR CLAIMS OF ANY KIND SHALL BE BINDING ON OR OBLIGATE ACTIVISION.

When returning the Program for warranty replacement please send the original product disks only in protective packaging and include: (1) a photocopy of your dated sales receipt; (2) your name and return address typed or clearly printed; (3) a brief note describing the defect, the problem(s) you are encountering and the system on which you are running the Program; (4) if you are returning the Program after the 90-day warranty period, but within one year after the date of purchase, please include check or money order for \$20 U.S. currency per disc replacement. Note: Certified mail recommended.

In the U.S. send to: Warranty Replacements, Activision, Inc. P.O. Box 67713, Los Angeles, California 90067

LIMITATION ON DAMAGES. IN NO EVENT WILL ACTIVISION BE LIABLE FOR SPECIAL, INCIDENTAL OR CONSEQUENTIAL DAMAGES RESULTING FROM POSSESSION USE OR MALFUNCTION OF THE PROGRAM, INCLUDING DAMAGES TO PROPERTY, LOSS OF GOODWILL, COMPUTER FAILURE OR MALFUNCTION AND, TO THE EXTENT PERMITTED BY LAW, DAMAGES FOR PERSONAL INJURIES, EVEN IF ACTIVISION HAS BEEN ADVISED OF THE POSSIBILITY OF SUCH DAMAGES. ACTIVISION'S LIABILITY SHALL NOT EXCEED THE ACTUAL PRICE PAID FOR THE LICENSE TO USE THIS PROGRAM. SOME STATES/COUNTRIES DO NOT ALLOW LIMITATIONS ON HOW LONG AN IMPLIED WARRANTY LASTS AND/OR THE EXCLUSION OR LIMITATION OF INCIDENTAL OR CONSEQUENTIAL DAMAGES, SO THE ABOVE LIMITATIONS AND/OR EXCLUSION OR LIMITATION OF LIABILITY MAY NOT APPLY TO YOU. THIS WARRANTY GIVES YOU SPECIFIC LEGAL RIGHTS, AND YOU MAY HAVE OTHER RIGHTS WHICH VARY FROM JURISDICTION TO JURISDICTION.

TERMINATION. Without prejudice to any other rights of Activision, this Agreement will terminate automatically if you fail to comply with its terms and conditions. In such event, you must destroy all copies of this Program and all of its component parts.

U.S. GOVERNMENT RESTRICTED RIGHTS. The Program and documentation have been developed entirely at private expense and are provided as "Commercial Computer Software" or "restricted computer software." Use, duplication or disclosure by the U.S. Government or a U.S. Government subcontractor is subject to the restrictions set forth in subparagraph (c)(1)(ii) of the Rights in Technical Data and Computer Software clauses in DFARS 252.227-7013 or as set forth in subparagraph (c)(1) and (2) of the Commercial Computer Software Restricted Rights clauses at FAR 52.227-19, as applicable. The Contractor/Manufacturer is Activision, Inc., 3100 Ocean Park Boulevard, Santa Monica, California 90405.

INJUNCTION. Because Activision would be irreparably damaged if the terms of this Agreement were not specifically enforced, you agree that Activision shall be entitled, without bond, other security or proof of damages, to appropriate equitable remedies with respect to breaches of this Agreement, in addition to such other remedies as Activision may otherwise have under applicable laws.

INDEMNITY. You agree to indemnify, defend and hold Activision, its partners, affiliates, contractors, officers, directors, employees and agents harmless from all damages, losses and expenses arising directly or indirectly from your acts and omissions to act in using the Product pursuant to the terms of this Agreement.

MISCELLANEOUS. This Agreement represents the complete agreement concerning this license between the parties and supersedes all prior agreements and representations between them. It may be amended only by a writing executed by both parties. If any provision of this Agreement is held to be unenforceable for any reason, such provision shall be reformed only to the extent necessary to make it enforceable and the remaining provisions of this Agreement shall not be affected. This Agreement shall be construed under California law as such law is applied to agreements between California residents entered into and to be performed within California, except as governed by federal law and you consent to the exclusive jurisdiction of the state and federal courts in Los Angeles, California. If you have any questions concerning this license, you may contact Activision at 3100 Ocean Park Boulevard, Santa Monica, California 90405, (310) 255-2000, Attn: Business and Legal Affairs, legal@activision.com.

X-MEN™ WOLVERINE'S™ REVENGE

ONLY BY UNCOVERING YOUR PAST,
CAN YOU SAVE YOUR PRESENT.

You've discovered that a deadly X-virus has been activated in your body. Now, you have only 48 hours to acquire the antidote from the evil organization that gave you the fatal disease.



Enter the Realm of the Senses where you see scent particles, hear distant sounds and detect heat sources to track enemies.



Use your razor-sharp claws to slice and dice opponents at will.

AVAILABLE APRIL 2003



Visit www.esrb.org or call 1-800-771-3772 for Rating Information.

MARVEL

ACTIVISION

activision.com

Activision, Inc. P.O. Box 67713, Los Angeles, CA 90067

MARVEL, X-Men and Wolverine: TM and © 2002 Marvel Characters, Inc. All rights reserved. www.marvel.com.

Game code © 2001-2002 Activision, Inc. and its affiliates. Published and distributed by Activision Publishing, Inc. Activision is a registered trademark of Activision, Inc. and its affiliates. All rights reserved. All other trademarks and trade names are properties of their respective owners.

Licensed for play on the PlayStation 2 computer entertainment systems with the NTSC U/C designation only. "PlayStation" and the "PS" Family logo are registered trademarks of Sony Computer Entertainment Inc. The ratings icon is a registered trademark of the Interactive Digital Software Association. Manufactured and printed in the U.S.A. THIS SOFTWARE IS COMPATIBLE WITH PLAYSTATION 2 CONSOLES WITH THE NTSC U/C DESIGNATION. U.S. AND FOREIGN PATENTS PENDING.

80367.226.US