

#1  
SELLING  
NCAA FOOTBALL  
FRANCHISE

# THE SPIRIT OF COLLEGE FOOTBALL

## FEATURES

### • THE COLLEGE GAME

Feel all the pageantry with over 200 fight songs, 3D cheerleaders, and 144 Division I-A and I-AA schools.

### • MY FAVORITE TEAM

Personalize the game interface based on your team's fight song, mascot, logos, and school colors.

### • BUILD A DYNASTY

Create your own school and schedule, recruit star athletes, and redshirt developing players to build a national powerhouse.

### • RIVALRY MODE

Beat your school's archrival and win one of 23 coveted trophies.

### • TROPHY ROOM

Display over 100 total trophies including conference championships and individual player awards such as the Heisman Memorial Trophy™.



EXPERIENCE COLLEGE PAGEANTRY

ENHANCED OFFENSIVE GAMEPLAY



50 ALL-MASCOT TEAMS



RUN COLLEGE PLAYS LIKE THE OPTION



\*Based on total franchise sales in 2001 from TRST.



EVERYONE

Visit [www.esrb.org](http://www.esrb.org) or call 1-800-771-3772 for Rating information.

1-2 Players | Memory Card (for PS2) - 3.6 MB | Digital Control | Analog Control | DVD ROM

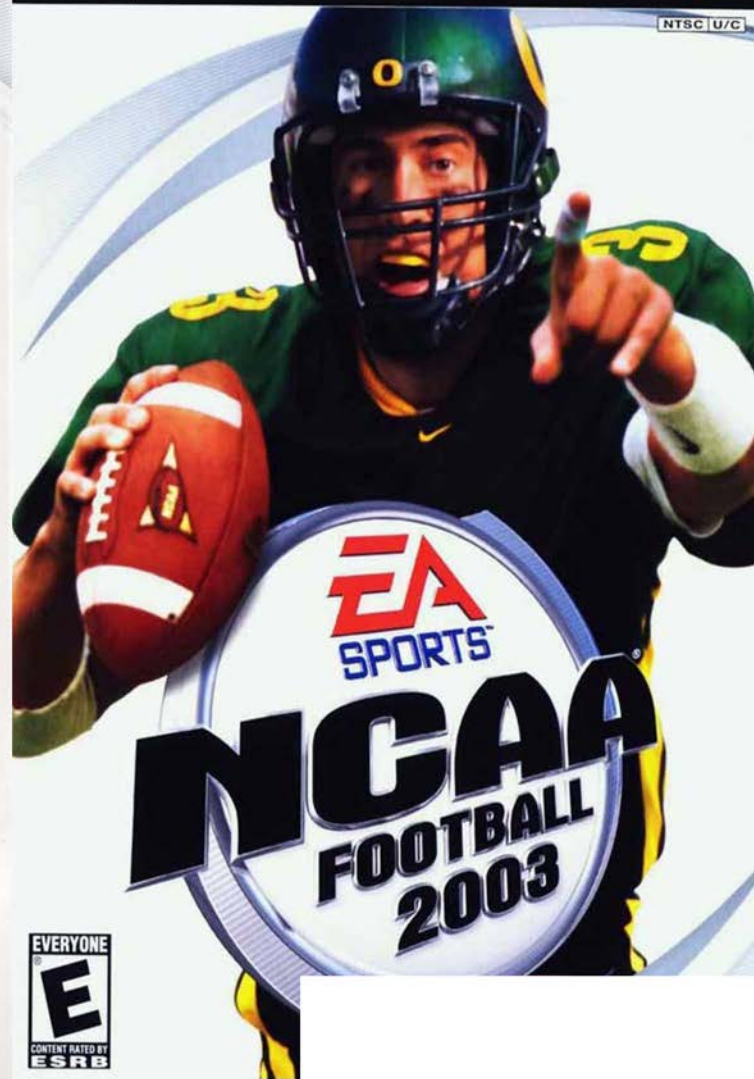
Vibration Function | Pressure Sensitive | Multiplay (for PS2) - 1-8 Players

Electronic Arts, 309 Redwood Shores Parkway, Redwood City, CA 94065. © 2002 Electronic Arts Inc. Electronic Arts, EA SPORTS and the EA SPORTS logo are trademarks or registered trademarks of Electronic Arts Inc. in the U.S. and/or other countries. All rights reserved. The "Officially Licensed Collegiate Products" label is the exclusive property of The Collegiate Licensing Company. The "Collegiate Licensed Product" label is the property of the Independent Labeling Group. All names, logos, team colors, and mascots associated with the NCAA, universities, bowls and conferences are the exclusive properties of the respective institutions. NCAA is a registered trademark of the National Collegiate Athletic Association and the NCAA Football logo is a registered trademark of the NCAA licensed to NCAA Football USA, Inc. Heisman Memorial Trophy and Heisman of the actual trophy are registered service marks by the Downtown Athletic Club under registration numbers 938,653 and 955,652 respectively. Dolby and the double-D symbol are trademarks of Dolby Laboratories. All other trademarks are the property of their respective owners. EA SPORTS™ is an Electronic Arts™ brand. Licensed for play on the PlayStation 2 computer entertainment systems with the NTSC UIC designation only. "PlayStation" and the "PS" Family logo are registered trademarks of Sony Computer Entertainment Inc. The ratings icon is a trademark of the Interactive Digital Software Association. Manufactured and printed in the U.S.A. THIS SOFTWARE IS COMPATIBLE WITH PLAYSTATION 2 CONSOLES WITH THE NTSC UIC DESIGNATION. U.S. AND FOREIGN PATENTS PENDING. 146811

# PlayStation 2



NTSC U/C



EVERYONE



CONTENT RATED BY  
ESRB

EmuMovies

**WARNING: READ BEFORE USING YOUR PLAYSTATION®2  
COMPUTER ENTERTAINMENT SYSTEM.**

A very small percentage of individuals may experience epileptic seizures when exposed to certain light patterns or flashing lights. Exposure to certain patterns or backgrounds on a television screen or while playing video games, including games played on the PlayStation 2 console, may induce an epileptic seizure in these individuals. Certain conditions may induce previously undetected epileptic symptoms even in persons who have no history of prior seizures or epilepsy. If you, or anyone in your family, has an epileptic condition, consult your physician prior to playing. If you experience any of the following symptoms while playing a video game – dizziness, altered vision, eye or muscle twitches, loss of awareness, disorientation, any involuntary movement, or convulsions – IMMEDIATELY discontinue use and consult your physician before resuming play.

**WARNING TO OWNERS OF PROJECTION TELEVISIONS:**

Do not connect your PlayStation 2 console to a projection TV without first consulting the user manual for your projection TV, unless it is of the LCD type. Otherwise, it may permanently damage your TV screen.

**USE OF UNAUTHORIZED PRODUCT:**

The use of software or peripherals not authorized by Sony Computer Entertainment America may damage your console and/or invalidate your warranty. Only official or licensed peripherals should be used in the controller ports or memory card slots.

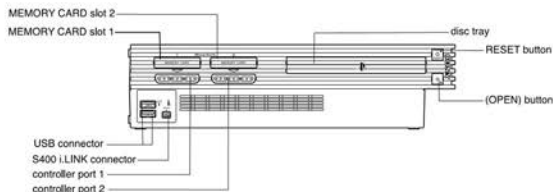
**HANDLING YOUR PLAYSTATION 2 FORMAT DISC:**

- This disc is intended for use only with PlayStation 2 consoles with the NTSC U/C designation.
- Do not bend it, crush it or submerge it in liquids.
- Do not leave it in direct sunlight or near a radiator or other source of heat.
- Be sure to take an occasional rest break during extended play.
- Keep this compact disc clean. Always hold the disc by the edges and keep it in its protective case when not in use. Clean the disc with a lint-free, soft, dry cloth, wiping in straight lines from center to outer edge. Never use solvents or abrasive cleaners.

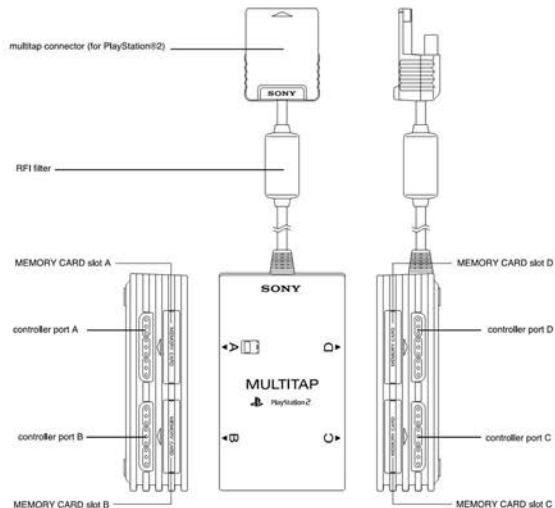
**TABLE OF CONTENTS**

Getting Started . . . . .	2
Intro . . . . .	4
Control Summary . . . . .	5
Menu Controls . . . . .	5
General Gameplay Controls . . . . .	6
Calling Plays . . . . .	6
On Offense . . . . .	8
Before the Snap . . . . .	8
Running the Ball . . . . .	9
Passing . . . . .	13
Quarterback Scramble . . . . .	14
Pass Types . . . . .	15
Catching a Pass . . . . .	16
On Defense . . . . .	17
Before the Snap . . . . .	17
After the Snap . . . . .	18
Special Teams . . . . .	20
Kicking the Ball . . . . .	20
Receiving Punts and Kickoffs . . . . .	20
Replay Controls . . . . .	21
Main Menu . . . . .	22
Game Modes . . . . .	23
Exhibition Mode . . . . .	23
Choosing Teams . . . . .	24
Controller Assignment Screen . . . . .	24
Coin Toss . . . . .	25
Selecting Your Plays . . . . .	25
Season Mode . . . . .	25
Legacy Mode . . . . .	27
Customize . . . . .	35
Options . . . . .	36
Credits . . . . .	37

## GETTING STARTED



Set up your PlayStation®2 computer entertainment system according to the instructions in its Instruction Manual. Make sure the MAIN POWER switch (located on the back of the console) is turned on. Press the RESET button. When the power indicator lights up, press the open button and the disc tray will open. Place the Sega Sports™ NCAA College® Football 2K3 disc on the disc tray with the label side facing up. Press the open button again and the disc tray will close. Attach game controllers and other peripherals, as appropriate. Follow on-screen instructions and refer to this manual for information on using the software.



## STARTING UP

### DUALSHOCK®2 ANALOG CONTROLLER CONFIGURATIONS



## INTRO

On a crisp autumn day, the crowd comes alive as the first notes of the school fight song blast out from the marching band on the field. The season is about to begin and the hopes and dreams of the student body and the alumni are running high. This is your year. The conference championship is there for the taking... a top national ranking is within your grasp. Do you have what it takes to lead your team all the way? Do you have what it takes to go to the Fiesta Bowl and win it all? With NCAA 2K3 you can find out. Select your Alma Matter and lead them into contention for the top spot. You can even win one of your players the Heisman Trophy, but it will take a solid offensive output week in and week out to get there.

NCAA 2K3 is packed with all kinds of great features like an ESPN broadcast presentation, all new player models, all 117 Division 1-A schools, mascots, cheerleaders and rabid student sections to recreate the electricity of a college football game. In Season and Legacy Modes you will get to guide your team through a regular season and see how you stack up in the Writers Poll, Coaches Poll and Sega Championship standings. If you do well enough your school will get invited to one of the 25-post season bowl games. And if you are good enough to wind up in one of the top two spots of the Sega Championship poll at the end of the year, you will compete for the National Championship at the Fiesta Bowl.

But once you've reached the top of the college game, can you stay there? See if you can in Legacy Mode. Build your program with strong recruiting classes. The better you do, the easier it will be to bring in the top talent. You'll also be able to go through Spring Training workouts to improve the skill level of your players. Compete in different regimens of offensive and defensive drills to get your team ready for next year.



## CONTROL SUMMARY

NCAA 2K3 is designed with analog functionality in mind. The DUALSHOCK 2 analog controller provides a fuller range of motion and adds to the overall depth of the game. However, if you're more partial to using the directional buttons, the default control scheme allows you to use this method to control player movement. Either way is acceptable, it's a matter of personal preference.

## MENU CONTROLS

Button	Action
left analog stick	Move cursor
X button	Select Menu Item / Scroll forward through the highlighted selections
● button	Scroll backward through the highlighted selections
■ button	Command Help Menu
▲ button	Cancel selection / return to previous screen

### Coach's Corner: Help

On most menu screens you can get help by pressing the **■** button.

### Coach's Corner: Virtual Control

Are you more than ready to take it to the opposition, but tired of trying to remember all of those buttons? Well, for those of you who just want to get down to the business of playing football, allow Sega Sports to introduce you to your new best friend - Virtual Control. Virtual Control is an analog-focused control system that will allow you to perform any of the game's moves without ever moving your hands from a natural position on the analog sticks. You will be closer to the field than ever before! Getting the most out of this advanced control mode will take some practice, so be sure to look at how the system works by examining Virtual Control commands, found in parentheses () alongside their standard companions throughout this manual.

## GENERAL GAMEPLAY CONTROLS

START button (during gameplay). Pause Menu  
left analog stick . . . . . Highlight

● button (at line of scrimmage) . . . . . Change control of your player

## CALLING PLAYS

R1/L1 button . . . . . Toggle through formations

✕ button . . . . . Select formation or play

▲ button . . . . . View previous formations or play sets

● button . . . . . Flip play or formation

■ button . . . . . View plays by package



### Coach's Corner: Bluff Mode

When you are playing against another human opponent, the last thing you want them to know is what play you are calling. To keep the defense guessing, press the **✕** button and keep it held down. You can then scroll through other pages of plays or formations to hide your play. When you release the **✕** button, it will call the play you originally selected.

When you are playing a game with more than one person per team (e.g. two-on-two), either player on the team can select a play. If you are on offense, the first person to enter a play will be the quarterback. Be careful though, both players will be able to select the play at the same time, so you will want to designate who the playcaller will be.

### Coach's Corner: AI Play Calling

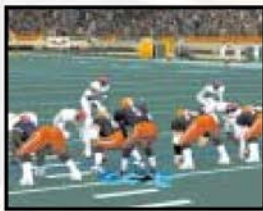
Need a hand? Then ask NCAA 2K3 for assistance. During play calling, press the **✕** button once and either the offensive or defensive coordinator for your team will suggest a play. Press the **✕** button again to accept the selection.

## BEFORE THE SNAP

- X** button (R3) . . . . . Hurry players to the line of scrimmage / snap ball
- ▲** button (right analog stick Up) . . . . . Call up the Audible Menu, press **X**, **●**, or **■** to select an alternate play. Press **▲** to cancel.
- button (left analog stick Left) . . . . . Lower crowd noise (quarterback)
- button (right analog stick Right) . . . . . Fake snap signal
- R2 . . . . . Hot Routes

## NO HUDDLE OFFENSE

The absolute best way to keep the defense on its heels is to go with a no huddle offense. The defense never gets a breather and you will be able to dictate the pace of the game. The no huddle offense is also a great way to score quickly as less time will run off the clock. Press the **▲** button (right analog stick Up) immediately after the completion of the play to quickly run the same play again. From there you can call an audible or create your own variation by sending your receivers out on Hot Routes.



## RUNNING THE BALL

Keep the ball on the ground and pound it out. You will control the clock and your running back will be racking up the yards in his pursuit of the Heisman Trophy. Here are the controls for running with the ball.

- X** button (L3) . . . . . Speed Burst / Power Move
- L1 or R1 button (right analog stick) . . . . . Stiff Arm Left / Right
- L2 or R2 button . . . . . Juke Move
- button (R3) . . . . . Dive
- ▲** button . . . . . Hurdle / High Step
- button . . . . . Spin Move

### Coach's Corner: Instant Energy

Press and hold the **X** button (L3) while running to fill the player arrow completely. You're all charged up now! Press any special move button and you will be able to put a little bit moreumph into it. Your stiff arm will be more devastating, your spin move more elusive, and your juke move more slippery.



## Coach's Corner: Spin City

NCAA 2K3's spin move feature might be a bit different than you are used to. When you press the button, you won't make the spin move right away - it only preps your runner for contact. As soon as a defender makes contact with the ball carrier, you'll execute the spin move - hopefully leaving your defender clutching nothing but air.



## RUN TYPES

There are several ways to move the ball on the ground. Here are some key terms to help you keep the offense moving forward.

**Draw** . . . . . A delayed run up the middle. Draw plays work well against a blitzing defense.

**Dive** . . . . . This is the forte of the power back. The ball carrier takes the ball and plows right up the gut. Get to the hole quickly; if you can make it through the line you will be running free through the secondary.

**Counter** . . . . . Works great against a defense that suffers from over pursuit. The defense thinks the play is going one way, but the ball carrier goes the other way. This only works if your offense can really sell the fake.

**Trap** . . . . . The trap play is designed to suck the linebackers into the wrong hole. Get the linebacker where you want him and the trap play will work well.

**Pitch / Toss** . . . . . If you've got a speedy running back, get him to the corner in a hurry with the pitch or toss play.



### Coach's Corner: Running the option

An offense you see a lot of in college football is the option. The quarterback can hand it off to a running back diving up the middle by pressing the **X** button. If the QB decides to keep it, he'll start running to the outside (like on a pitch or toss play) and then it's decision time once again. The quarterback needs to read the linebacker and either keep the ball, or pitch it to the running back by pressing the R2 button. Option plays are colored yellow in your playbook.



### PASSING

Running the ball will get you yards by the handful, but it is the passing game that will get you yards by the bunches. Be careful though, if you throw the ball up for grabs the momentum of the game can turn in a heartbeat. One of the most deflating things for a team is seeing a cornerback intercept a pass and streak down the sidelines for a touchdown.



- Any button ..... Pass to that receiver  
(double tap to fake)
- L2 button ..... Pump fake
- R2 button ..... Throw the ball away

### Coach's Corner: Set your feet!!!

Having problems completing passes? You probably aren't giving your players the best chance. Most real players can't wing the ball downfield while on the run; they need to plant their feet before they throw. So make sure you do the same when you are playing the game. Stop moving for just a moment and your completion percentage will go up.





## QUARTERBACK SCRAMBLE

Even the best offensive line in college football will let a defender through from time to time. So when you see the defense coming through, you need to make a quick decision - throw the ball away or take off running. Hold down the R1 button and your QB will become a runner so that you can scramble out of the way. Once you've passed the line of scrimmage, you can let go of the R1 button as you can't pass the ball anymore.



- R1+L2 / R2 button . . . . . Juke Move  
(right analog stick Down  
left or right analog  
stick Down Right)
- R1+ X button (L3) . . . . . Speed Burst / Power Move
- R1+ ● button . . . . . Stutter Step / Spin Move  
(right analog stick Right)
- R1+ ■ button (R3) . . . . . Slide
- R1+▲ button . . . . . Hurdle  
(right analog stick Up)
- R1+(right analog stick Left) . . Dive

## PASS TYPES

There are numerous pass plays that you can call, but they break down to three basic categories.

- Normal Pass . . . . . Drop back, find the open man, and let the ball fly.
- Play Action . . . . . The QB fakes a handoff and then drops back to pass. Play Action passes work best when you've been pounding the ball on the ground for a long time.
- Bootleg . . . . . On the bootleg play, the QB will fake a toss to one side of the offensive line and roll out in the other direction.



### Coach's Corner: Maximum Passing

If you want total control over your passing game, turn on Maximum Passing from the Controller Assignment Screen. With Maximum Passing activated, you can lead your receivers to thread the ball in front of, behind, over, and around the defenders. To use Maximum Passing, press the left analog stick in the direction in which you want to adjust the throw. Press the stick a little bit for a fine adjustment, press harder for a bigger adjustment.

With Maximum Passing turned on, you also get total control over getting the ball into the receiver's hands. Tap the pass button to lob the ball, which works great for getting ball over the defender that is between you and your receiver. Press the pass button normally to deliver a normal throw (make sure you let go of the button before it leaves the quarterback's hands). Hold onto the pass button for a bullet pass. Bullet passes work great when the receiver is only open for a short time and when the defender is playing deeper than the receiver is.

### CATCHING A PASS

Now that the ball is in the air your receiver has to make the catch. The best receivers run precise routes, have unshakable concentration, and have a knack for being in the right place at the right time. You'll notice that once the ball is in the air, three icons will appear on screen. The red marker is the shortest place where you can catch the ball, you'll probably have to jump - ▲ button (right analog stick Up) - to do it. The yellow icon is the perfect spot to catch the ball. The red icon is the deepest mark on the field, you'll probably have to dive - ■ button (R3) - to make this catch as it will be coming in low at this point. Press the ● button (right analog stick Right) to select the receiver nearest the ball. You don't have to take control of your receiver to complete the pass, but doing so and pressing the right button (jump or dive) can help make a catch you might otherwise miss.



### ON DEFENSE

The offense gets all of the attention, but real football fans know that it is defense that wins championships. Stuff the run, shut down the passing game, and force the turnovers that will lead your team to glory.

### BEFORE THE SNAP

- (right analog stick) . . . . . Select a defender
- + directional button . . . . . Directional swapping (left analog stick)
- directional button . . . . . Reposition defender (left analog stick)
- L2 or R2 button . . . . . View players (with defensive back selected)
- L1 or R1 button . . . . . Shift defensive line of scrimmage (with defensive lineman selected)
- X button (R3) . . . . . Hurry players to the line of scrimmage
- button . . . . . Pump up crowd (right analog stick Left)
- ▲ (right analog stick Up) . . . . . Call audible

### Coach's Corner: Let the defense play

Would you rather be the strategist than the tactician? Are you afraid that you'll blow the coverage and give up a big TD? Then let the AI worry about it. Just make sure you don't touch the controller (either moving the left analog stick or pressing a button) and the AI will do the rest. If you do touch the controller, then it's up to you.



### AFTER THE SNAP

- button ..... Switch defenders  
(right analog stick Right)
- X button (L3) ..... Speed Burst
- button ..... Dive / Tackle  
(right analog stick Down)
- ▲ button ..... Jump  
(right analog stick Up)
- L1 / R1 button ..... Defensive line  
special move
- left analog stick ..... Control your player

### Coach's Corner: Using the Right Player

Before the snap, use the ● button to select which defender you are controlling. Try to use a lineman or a blitzing linebacker or safety - that way all you have to worry about is getting into the backfield and sacking the QB or tackling the running back. If you select a cornerback or a safety that is dropping back into coverage, you won't be able to see the man you're supposed to be defending if he runs off screen.

### Coach's Corner: Say what?

You'll often hear that the defenders are playing bump-and-run or man-to-man. What does that mean? In man-to-man coverage, your corner back is up at the line of scrimmage and is playing the receiver tight. In loose coverage, your cornerback is locked in on his man, but starts off the line of scrimmage to give the receiver a cushion. Defenses use loose coverage when there is a big speed differential between the receiver and cornerback (in favor of the receiver) and are trying to defend against the big play. With bump-and-run coverage, your cornerback comes up to the line and hits the receiver. This will slow down the receiver and disrupt the timing of the offense. Zone coverage designates the defenders to cover an area rather than a player in particular. The problem with zone coverage, though, is that the offense can flood receivers into a zone so there will be more receivers than defenders.



## SPECIAL TEAMS

Though they're usually the last guys you hear about on the football field, having quality special teams can make a difference in the game. Good punters can pin your opponent inside their own 5-yard line. A good punt or kick returner can break free of the defenders and score a game-changing touchdown.

## KICKING THE BALL

1. Set the ball trajectory and direction with the left analog stick. Be sure you take into account the movement of the arrow - it will drift if you let go of the left analog stick.
2. Press the **X** button to snap the ball / start the play
3. Press the **X** button again to stop the power meter as close to the top as possible for a booming kick

## RECEIVING PUNTS AND KICKOFFS

directional button/

left analog stick. . . . . Control return man  
after reception

- ▲ button (before catch) . . . . . Fair Catch
- ▲ button (after catch). . . . . Down the ball  
(in the endzone only)

### Coach's Corner: Kick the ball!

Too often players get in the habit of going for it on fourth down. In real life teams rarely go for it, but it seems that players on the digital gridiron go for it far too often. Kick the ball and let your defense take care of business. If you don't make the first down, your opponent will wind up with better field position.



## REPLAY CONTROLS

Need to see that play again? Then pause the game (by pressing the START button) and select the Replay option. Now you can watch your Heisman hopeful bust through the line on that 83-yard scamper or watch your corner step in front of the receiver to make the big interception again and again.

- X** button . . . . . Play / Stop
- L1 button. . . . . Rewind
- R1 button . . . . . Fast forward
- left analog stick . . . . . Rotate camera
- directional button . . . . . Move camera focus
- button . . . . . Zoom in
- button . . . . . Zoom out

## MAIN MENU

After the NCAA 2K3 title screen has appeared, press start to see the main menu screen. From here, you can jump to into the game or set things up just the way you like them.



**Quickstart:** Jump into the game with two teams selected at random. This is a great way to brush up on your skills before your buddies come over.

**Game Modes:** Select one of the many game modes and then head out to the field.

**Customize:** Design your own players, teams, and schools.

**Options:** Change the way the game is presented by adjusting the volume, the penalty calling, and many other user configurable options.

**Load/Save:** Load and Save your game settings.

**User Records:** Check out how you have been doing by looking at your stats.

## GAME MODES



**Practice:** Brush up on your favorite team's formations and plays. Champions are built with a solid foundation on the practice field.

**Tourney:** Compete in a 4, 8, 16, tournament to see who comes out on top.

**Exhibition:** Match up any two teams and head out to the field.

**Season:** Lead your team through a regular season. Do well enough and you'll be playing in one of the 25 bowl games at the end of the year.

**Legacy:** With Legacy Mode you will lead your football program through season after season. Can you build the next great powerhouse in college football? Recruit high school seniors, redshirt players, and hold spring training workouts to improve your chances in the upcoming campaign. You've got 25 seasons to mold your school, can you become a legend?

## EXHIBITION MODE

Now that you have all of the basics down, let's head on out to the field and throw the pigskin around. This game won't count for your season standings, but it is a good way to get some practice.

## CHOOSING TEAMS

Note: the team on the left is the visitors and the team on the right is at home.

To make it easier to find the team you are looking for the teams are grouped by conference. Press the R2 / L2 button to scroll through the list of conferences. Then press the R1 / L1 button to select your team. For a change of pace, you can also change the playbook your team is using. Want to see what your team would look like running an option offense? Then try out Nebraska's playbook.



## CONTROLLER ASSIGNMENT SCREEN

Once you've selected the teams, the Controller Assignment screen appears. Press the left analog stick or directional button left/right to align your controller with the team you wish to coach. Once you've picked a team, you can choose Maximum Passing by pressing the X button. When everything is set the way you want, press the START button to advance to the game. Controller Assignment for Exhibition is on the same screen as Team Select; for all other modes, it is separate (this is to allow the user access to his User Records' name during any gaming mode).



## COIN TOSS

The visiting team gets to call it. The winner of the toss gets to choose whether to kick or receive. The loser chooses which goal to defend. Following the coin toss, the Special Teams play calling screen appears and the game is set to begin.

## SELECTING YOUR PLAYS

The National Championship is built around the talent of the athletes, teamwork, and the coach's playbook. This isn't old school AI where you could call the same plays over and over again. To win, you are going to have to mix up your plays on offense and defense. Play to your team's strengths. If you have great cornerbacks, you can gamble more with blitzes and exotic zone defense. If you have a great running back, then pound the ball out on the ground. For the offensive playbook, passing plays are displayed in blue, running plays are displayed in red, and option plays are displayed in yellow.

## SEASON MODE

To make it to the post season bowl games, you first have to make it through the regular season. Play conference and non-conference games as you battle against the rest of the Division 1-A teams. If you rank high up in the Sega Championship poll, you will get invited to one of the premier bowl games. If you're good enough to finish first or second in the poll at the end of the regular season, you can move on to the Fiesta Bowl and battle for the National Championship. In Legacy Mode, the championship game will rotate between the four major bowls in this pattern - Fiesta Bowl (2003), Sugar Bowl (2004), Orange Bowl (2005), and Rose Bowl (2006).

Once you've selected your school, you will come to the Season Menu:

**Schedule:** Take a look at your upcoming opponents.

**Options:** Just like the options menu from the main screen, you can set up the game just how you like it.

**Customize:** Manage your depth chart and rosters with the customize menu.

**Team Select:** Change which team you're looking at.

**Save:** Save your season's progress.

**Quit:** Exit season mode and return to the main menu.



## LEGACY MODE

Welcome to NCAA 2K3's legacy mode. This is the start of the 2002 NCAA season. Check out the management option to see what is happening with your team. Take over an existing college program or build up your own national powerhouse.

**Management:** Set up your team by modifying the depth chart and scouting your opponents.

**Next Week:** Advance to the next week of your season.

**Schedule:** Check out who is playing who in college football.

**Team Schedule:** See who your upcoming opponents will be.

**Stats:** How many yards does your Heisman hopeful have? NCAA 2K3 keeps track of tons of stats. Pour over the numbers to your heart's content.

**Save:** Save your season's progress.

**Options:** Adjust the way the game is played. See page 36 or a description of the various options.

**Quit:** Exit Legacy Mode and return to the main menu.

## MANAGEMENT

**Depth Chart:** Move players from the second string to starting roles to fill in for injuries or to demote poorly playing players.

**Cut Players:** Get rid of players to make room for new recruits and up and comers.

**Scouting:** Check out the stats and numbers of your opponents.

**Coaching Strategies:** Adjust the weighting of your team's play calling.

**Needs:** Check out who's going to be graduating. This will help you when the recruiting period comes up.

**Redshirt:** Did you recruit a phenom at quarterback but he's not ready to unseat your senior QB just yet? Then redshirt him for the year and he won't lose his eligibility.

## AT THE END OF THE SEASON

After the Bowls and before Recruiting, a Coaching Comparison screen will appear where you might be able to see your name amongst the NCAA's greatest coaches of all time (if your teams perform well enough over a long period of time). Points are awarded for: Wins, Bowl Invites, Sega Championship Bowl Invites, Winning Conference, Leading the Nation in several different statistical categories, having the Heisman Trophy winner on your team (and several others). Press the **X** button to see how you did during the previous Season. Press the **START** button to continue on to Recruiting.

## RECRUITING

Pick players off of a list of High School and Junior College recruits (following each season + Bowls). This lasts 5 weeks; press the **START** button to advance 1 week. You may visit up to 12 recruits per week (or revisit players to seal the deal and get them to commit to your program). Amongst the lists of players you can view are the Top 150, separate regional selections, by position, players you've visited, and players who have committed to your program. You switch through these different lists by pressing the R1, R2, L1, and L2 button; select to visit (or remove a visit) by pressing the **X** button, and sort a stat category by pressing the **●** button.

## PLAYER RATINGS

The best players are "A" rated; the worst are "D". You can see what school the player is interested in and the order he'd like to visit them. Additionally you can see where the player is in his decision-making process.

**Committed:** He's signed with a school.

**Packed:** He's made up his mind that he's going to the first school on his list, but hasn't signed yet. There is very little chance that you'll change his mind if you aren't that first school listed.

**Wavering:** He isn't as committed as he once was to the first school in his list. This is normally caused by a school with a great reputation/ranking recruiting him when he didn't even consider going there.

**Slight Lean:** Not that committed to the first school listed; another visit will be needed to get this type of player to change his attitude towards your school (or visits from the CPU-controlled schools can do the same).

**Uncommitted:** Thinking about the schools listed, but not leaning towards any one of them.



### Coach's Tip

– Try to recruit players which are nearest to your school's level within Division 1-A . Did your team win it's Conference and go to a Bowl Game? You will probably find more "A" & "B" rated players that will be interested in coming to your school. If you have a losing record in a weak conference, you will have a hard time finding those "Elite" players wanting to come to your school. Play within your program and slowly build up towards being granted easier access to those "A" & "B" players by getting the best "C"s & "D"s that you can and training them hard.

**Signing Screen** – After the 5th week of recruiting, a list of players you successfully signed will appear. Above this list will be listed a number of "Free Slots" you have available on your roster. If this number is not zero, you can sign everyone that you have successfully recruited; if this number is zero, you might need to check your list to see which players you want to sign. Use the **X** button to select/deselect the currently highlighted player. **START** will take you on to Training.

**Training** – Training gives you the opportunity to drill your team, and see real improvements in their performance. You can distribute your training points in any way that you desire, but be wary. If you see the indicator next to the currently highlighted drill change from **LOW** to **MED** or **MED** to **HIGH**, you are increasing the possibility of bad things happening. Players participating in the drills at these levels will have a higher possibility of getting injured or having their ratings becoming unbalanced by training too much in one area. Also note that points spent on Group Drills (7-on-7, 6-on-7) spend points across all the positions which participate in those drills. After you've spent all your Training Points in all of the positions (Press the **R1** & **L1** buttons to rotate through the different groups), press the **START** button to execute your training. See Page 31 for a brief description of the drills you can run during Spring Training.

### Coach's Tip

– For a quick way to distribute all your Training Points in a reasonably safe fashion, press **R2** and select "yes" from the popup which appears. This distribution of points is not "ideal" or "suggested"; it is just a starting point - the best training results will come from experimentation.

## SPRING TRAINING

During Spring Training you will be able to work with your team to improve their stats and numbers. Here's a breakdown of the various drills offered during your spring workouts.

### Offensive Drills

**7 on 7** - The QB and all receivers, including RB's, run pass routes against the DB's and LB's.

**Rollouts** - The QB's practice moving and throwing on the run.

**Grip Strength** - The QB learns how to hold onto the ball under pressure.

**One Knee** - This drill helps strengthen the QB's throwing arm.

**Routes** - The QB and receivers need to be on the same page when it's time to throw.

**Weight Room** - Everybody pumps iron these days.

**Conditioning** - Run, run, run, and run some more.

**Playbooks and Gamefilm** - You've got to know what you're doing as well as what the opponents will be doing.

**Bag Drills** - Practice running through traffic... get your knees up!

**Gauntlet** - With this drill, you run through tackling dummies and defenders.

**Quick Feet/Block Recognition** - You gotta learn to protect the QB.

**Linebacker Awareness** - If you don't know where the LB's are, the QB will take a pounding.

**Patterns** - Here you learn how to get open and catch the ball.

**One on One (WR's)** - Receivers need to be able to block and run routes.

**Sled Training (TE's)** - TE's work down in the trenches as well. Helps you work on your blocking technique.

**6 on 7** - This drill helps the O-line block as one.

**High Knees** - Offensive linemen need to step on people.

## DEFENSIVE DRILLS

**High Knees** - Bodies fly all over in the trenches. This drill helps the D-Line step over the pile.

**One on One (Def Line)** - You against him. Practice getting around the blocker.

**6 on 7** - It's all about the D-Line and LB's working together, and here's where we get on the same page.

**Tackle Drills** - Practice blasting the pretty-boy ball carriers...and it's fun too!

**Weight Room** - More muscle = more mass, more mass = harder tackles...that's why you play defense.

**Conditioning** - If your offense is turning over the ball, you need to be in shape.

**Playbooks and Gamefilm** - You can't just be fast and strong, you've got to be smart. This is where we'll get an extra step on the offense.

**Zig Zags** - Since DB's are chasing receivers all game, you need to be agile.

**One on One (DB's)** - With this drill everyone gets the chance to be out on an island... being CB isn't so easy, is it?

**Bag Drills (LB's)** - Bodies fly everywhere in the box... this will help you avoid getting tangled up in the pile.

**7 on 7** - With defensive pass coverage, you need to know where everyone is supposed to be, not just yourself. Let's go out and practice some coverages against a passing attack.

### Kickers/Punters

**Weight Room** - Like we said, everyone is pumping iron these days.

**Conditioning** - Who knows... maybe the kicker is the only thing standing between your opponent and a special teams TD.

**Playbooks and Gamefilm** - Even if you just kick a ball there are things that you can learn from film.

**Punting Drills** - Kick the ball. Go pick it up. Kick it again. That's what you do. Now get out there and try for the coffin corner.

**Kicking Drills** - OK, here's the deal. You need to kick the ball far and straight...we don't want to be haunted by any "Wide Right's."

## CUSTOMIZE

Almost everything is customizable in NCAA 2K3, by selecting Customize from the main menu you can change the following options:

**School Create** - Make up your own Division 1A school for the ultimate challenge. Can you create the next great football powerhouse?

**Player Create** - Want to see how you would do on the college level? Do you want to relive your college glory days? Then go ahead and input your stats into NCAA 2K3 and create your own player. Maybe you just want to see if you can create the ultimate collegiate athlete that can win the Heisman Trophy. Select the player create option and see if you can do it.

**Edit Players** - Change the rosters of your favorite college.

**Recruitment** - Set up the high school seniors that will be coming to the college level for the next season

**Depth Chart** - Does your fourth string running back look more promising? Promote him up to a starting role with the depth chart menu.

**Reset Rosters** - Ooops. Did you mess up? Don't worry, you can always reset the rosters with this option.

**Save Rosters** - Save all of your hard work so the players, rosters, depth charts, and recruits are ready for you the next time you play NCAA 2K3.

## OPTIONS

Customize the way you want to play NCAA 2K3 prior to kick off with the options menu. Press the **X** button to cycle forward through an option selection, press the **●** button to cycle backward.

**Game Options:** Change the game options like quarter length, skill level, and game speed.

**Controller:** Change the controller layout from the default.

**Penalties:** Select which penalties you want to be called and the frequency that they are called.

**Presentation:** Change the camera angle, sound effects, volume, and ESPN replays.

**Credits:** Check out the people that brought you NCAA 2K3 .

**Weather:** Want to play in the mud? Then dial up the precipitation and let the rain come falling down.

## CREDITS

### VISUAL CONCEPTS

NCAA 2K3

**Executive Producer**  
Greg Thomas

**Project Manager**  
Happy Keller

**Quality Assurance Director**  
Chien Yu

**Lead Tester**  
Robert Nelson

**Assistant Lead Tester**  
Derek Williams

**Quality Assurance**  
Matthew Allen  
Erik Andreassen  
Stephen Benz  
Brad Blakslee  
Tim Collins  
Derek Davis  
Joey Edwards  
Bertrand Estrellado  
Shane Fenton  
Dan Gildengorin  
Christopher Gross  
Maurice Hill  
Craig Kilcoyne  
Thomas Kim  
Brian Krawchuk  
Erik Lampi  
Damon Perdue  
Andrew Peters  
Michael Regan  
Eli Robles  
Semmy Sebastian  
David Winslow

**Additional Testing**  
Andrew Davies  
Drew Gall  
Kevin Hicks

**Special Thanks**  
Richard Yee  
Jenn Baker  
Jeff Thomas  
Matt Crysdale  
Rustin Lee  
Mark Allen  
Matt Karnes  
Brian Luzietti

NFL 2K2

**Director Of Technology**  
Tim Walter

**Lead Engineer**  
Chris Larson

**Lead Artificial Intelligence Engineer**  
Shawn Lee

**Engineers**  
Matt Hamre  
Nick Jones  
Alex Lee  
Matt Bandy  
Marc LeBlanc  
Aki Rimpilainen  
Boris Kazanskii  
Matt Underwood  
Andrew Marrinson  
Tim Meekins  
Tom Bak

**Library Engineers**  
Ivar Olsen  
Eivind Hagen  
Chuck Batson

**Art Director**  
Matt Crysdale

**Artists**

Eric Apel  
 Fred Wong  
 Joel Flory  
 David Northcutt  
 Desha Chanhadara  
 David Lee  
 Hsing-Wen Hsu  
 David Dame  
 Joyce Rietveld  
 Ji Ahn  
 Alvin Cordova  
 Anton Dawson  
 Marten Lundsten  
 Frank Robbins  
 John Neary  
 Dan Lavender  
 John Lee  
 Bobby Milly  
 Steve Paris  
 Daniel Dawson

**Sound Engineer**

Larry Peacock

**Dialog Editor**

J. Mateo Baker

**Motion Capture Director**

Matt Karnes

**Motion Capture**

Rich Nelson  
 Gavin Mccall

**Executive Producer**

Greg Thomas

**Project Manager**

Jeff Thomas

**Production Assistants**

Rustin Lee  
 Abe Navarro  
 Brandon Justice

**AVALANCHE****Programming**

Rob H. Nelson  
 Dwain Skinner  
 Matt Parrish  
 Paul Blagay  
 Tadashi Sakashita  
 Travis Nixon  
 Tyler Colbert  
 Joe Barnes  
 Todd Blackburn

**Art**

Dallin R. Haws  
 Abe Day  
 Alex Olmos  
 Chad Johnson  
 Douglas Oxborrow  
 Fraser Sunderland  
 Jason Danahy  
 Jeff Bunker  
 Jeffrey Hendershot  
 Jeremy Saunders  
 Jeremy Wood  
 Joe Williamsen  
 Mike May  
 Mike Thompson  
 Rodney Olmos  
 Todd Dewsnup  
 Tony Jones  
 Tyler Lybbert  
 Wayne Tyler  
 Danny Keyes

**Project Management**

Vince Bracken  
 Bill VanOverbeck  
 Camila Ebert

**Production Assistants**

Stokes Aitken  
 Scott Yoho  
 Kirsten Andersen

**Script and Audio**

Craig Abo  
 Jeff Oxborrow  
 Jonathan Bray

**Motion Capture**

Stokes Aitken  
 Bernard Bendinger  
 Dorset Jefferson  
 Henry Kaufusi  
 Eric Crouch

**Plays/Playbooks**

Stokes Aitken

**Mascot**

Ron Claassen

**Cheerleader**

Cassidee Sagers

**Band Director**

Shannon Roberts

**Band Engineer**

Todd Feeney

**The Band**

Amber Tuckness  
 Dan Bryce  
 Douglas W. James  
 Heath Wolf  
 James Harris  
 Jerry Floor  
 Keith Davis  
 Kevin Patrick Fallon  
 Lori Clark  
 Matthew D. Boehme  
 Neil Hendriksen  
 Reed L Le Cheminant  
 Steven Corey  
 Tiffany McCleary  
 Walter C. Bateman  
 W. Evan Bateman

**Script Writer**

Rob Thomas

**Voices**

"Jim Peppers"  
 Dwayne Stevens

**"Jake Sorensen"**

Tim Hughes

**"The Ref"**

Bill VanOverbeck

**"Other Voices"**

Marcus Fisher  
 Stokes Aitken  
 Mike May  
 Bill VanOverbeck

**Player Ratings**

Player rankings researched, created, tweaked and massaged by Collegefootballnews.com, associates of College Football News, Inc. and several friends of the program.

Pete Fiutak  
 Chip Blackwell  
 Richard Cirminiello  
 Malcom Eaton  
 Mike Holbrook  
 Amir Kader  
 Michael Lev  
 Doug MacLennan  
 Greg Manning  
 Chris Niewoehner  
 Matthew Zemek

**FMV Video**

CCI Digital

**SEGA OF AMERICA**

**Product Manager**  
Sam Hopkins

**Senior Product Manager**  
Stacey Kerr

**Vice President, Sports Marketing**  
Tom Nichols

**Public Relations**  
Marc Franklin  
Shahed Ahmed

**Licensing**  
Brad Schlachter  
Shinobu Toyoda

**Channel Marketing**  
Scott Lambrecht

**Creative Services Project Manager**  
Matt Shell

**Documentation Design**  
Miles Steuding

**Documentation**  
Keith M. Kolmos

**Director, Creative Services**  
Bob Schonfisch

**Special Thanks**

Pat Battle - Collegiate Licensing Company  
Andy Waligowski - Collegiate Licensing Company  
David Kirkpatrick - Collegiate Licensing Company  
Anna Wilkinson - Collegiate Licensing Company  
Peter Moore  
Chris Gilbert  
Diana Zoller  
Cindy Jenney  
Maya Hermanson

**DISNEY INTERACTIVE**

**Producer**  
Keith Hargrove

**Assistant Producer**  
Eric Sorenson

**Marketing Director**  
Bob Picunko

**Marketing Manager**  
Stephanie Yoshimoto

**ESPN INC.**

**Intro Announcer**  
Dan Patrick

**NCAA Football Coordinating Producer**  
Tim Corrigan

**College Football Graphics**  
Al Diprato

**Graphics Artists**  
Dan Leone

**Associate Producer NCAA Football**  
Keith D'Alessandro

**Director, ESPN Enterprises Consumer & Media Products**  
Mary B. Moore

**Special Thanks**

Jan Smith  
Steve Finney  
George Bodenheimer  
Dan Winters  
Sanjeev Lamba  
Tori Stevens

**SCHOOL FIGHT SONGS**

University of Alabama at Birmingham (Alabama)  
"Yea Alabama"  
University of Arizona  
"Bear Down Arizona"  
Arkansas State University  
"ASU Loyalty"  
Ball State University  
"Ball State Pep Song"  
Boise State University  
"Orange and Blue"  
Boston College  
"For Boston"  
Bowling Green State University  
"Flight of the Falcons"  
Brigham Young University (BYU)  
"Cougar Fight Song" & "Rise and Shout"  
University of California - Berkeley (Cal)  
"Fight On California Lights Out March"  
Central Michigan University  
"Central Fight Song"  
University of Cincinnati  
"Cheer Cincy"  
East Carolina University  
"E.C. Victory"  
University of Florida  
"Orange and Blue"  
Fresno State University (CSU Fresno)  
"Bulldog Spirit"  
Georgia Institute of Technology (Georgia Tech)  
"Ramblin' Wreck From Georgia Tech"  
University of Hawaii  
"Co-Ed"  
University of Idaho  
"Go, Vandals, Go"  
Indiana University at Bloomington  
"Indiana, Our Indiana"  
Iowa State University  
"Iowa State Fights"  
University of Kansas  
"I'm A Jayhawk"  
Kansas State University  
"Wildcat Victory"  
University of Louisville  
"Alma Mater" & "Fight U of L"  
University of Maryland  
"The Victory Song"  
University of Michigan  
"The Victors March"  
Michigan State University  
"Fight Song"  
Mississippi State University  
"Hail State"

University of Missouri

"Fight Tigers"  
Middle Tennessee State University  
"MTSU Fight Song"  
New Mexico State University  
"NMSU Fight Song"  
University of North Carolina  
"Alma Mater"  
North Carolina State University  
"Army Caissons Song"  
University of Northern Illinois  
"Huskie Fight Song"  
Northwestern University  
"Go U Northwestern"  
University of Notre Dame  
"Notre Dame Victory March"  
("The") Ohio State University  
"Across The Field"  
University of Oklahoma  
"Boomer Sooner"  
Pennsylvania State University (Penn State)  
"Fight On State"  
Pittsburgh State University (Pittsburgh: Pitt)  
"Hail To Pitt"  
Purdue University  
"Hail Purdue"  
San Diego State University  
"Fight Song"  
Southern Methodist University (SMU)  
"She'll Be Comin' Round The Mountain"  
University of Southern Mississippi  
"Southern To The Top"  
Syracuse University  
"Down The Field"  
University of Tennessee  
"Fight Vols Fight"  
Texas Tech University  
"Fight, Raiders, Fight"  
Troy State University  
"Trojans One and All"  
Tulane University  
"Tulane Fight Song"  
US Air Force Academy  
"Air Force Fight Song"  
US Military Academy (Army)  
"The Army Caissons Song"  
University of Virginia  
"The Good Old Song"  
Washington State University  
"The Fight Song"  
West Virginia University  
"Hail To West Virginia"  
University of Wisconsin-Madison (Wisconsin)  
"On Wisconsin"

Notes

Notes

Notes

***\*THIS LIMITED WARRANTY IS VALID FOR SEGA PRODUCTS FOR PLAY ON PLAYSTATION®2 COMPUTER ENTERTAINMENT SYSTEM MANUFACTURED FOR SALE IN AND PURCHASED AND OPERATED IN THE UNITED STATES AND CANADA, ONLY!***

#### **Limited Warranty**

Sega of America, Inc. warrants to the original consumer purchaser that the PlayStation 2 game disc shall be free from defects in material and workmanship for a period of 90-days from the date of purchase. If a defect covered by this limited warranty occurs during this 90-day warranty period, the defective PlayStation 2 game disc will be replaced free of charge. This limited warranty does not apply if the defects have been caused by negligence, accident, unreasonable use, modification, tampering or any other causes not related to defective materials or workmanship. Please retain the original or a photocopy of your dated sales receipt to establish the date of purchase for in-warranty replacement. For replacement, return the product, with its original packaging and receipt, to the retailer from which the software was originally purchased. In the event that you cannot obtain a replacement from the retailer, please contact Sega to obtain support.

#### **Obtaining technical support/service**

To receive additional support, including troubleshooting assistance, please contact Sega at:

- web site . . . . . <http://www.sega.com>
- e-mail . . . . . [support@sega.com](mailto:support@sega.com)
- telephone . . . . . 1-716-650-6702

#### **LIMITATIONS ON WARRANTY**

ANY APPLICABLE IMPLIED WARRANTIES, INCLUDING WARRANTIES OF MERCHANTABILITY AND FITNESS FOR A PARTICULAR PURPOSE, ARE HEREBY LIMITED TO 90-DAYS FROM THE DATE OF PURCHASE AND ARE SUBJECT TO THE CONDITIONS SET FORTH HEREIN. IN NO EVENT SHALL SEGA OF AMERICA, INC. BE LIABLE FOR CONSEQUENTIAL OR INCIDENTAL DAMAGES RESULTING FROM THE BREACH OF ANY EXPRESS OR IMPLIED WARRANTIES. THE PROVISIONS OF THIS LIMITED WARRANTY ARE VALID IN THE UNITED STATES ONLY. SOME STATES DO NOT ALLOW LIMITATIONS ON HOW LONG AN IMPLIED WARRANTY LASTS, OR EXCLUSION OF CONSEQUENTIAL OR INCIDENTAL DAMAGES, SO THE ABOVE LIMITATION OR EXCLUSION MAY NOT APPLY TO YOU. THIS WARRANTY PROVIDES YOU WITH SPECIFIC LEGAL RIGHTS. YOU MAY HAVE OTHER RIGHTS WHICH VARY FROM STATE TO STATE.

Sega is registered in the U.S. Patent and Trademark Office. Sega, the Sega logo, and Sega Sports are either registered trademarks or trademarks of Sega Corporation © SEGA CORPORATION, 2002. All Rights Reserved. [www.segasports.com](http://www.segasports.com) The "Officially Licensed Collegiate Products" label is the exclusive property of The Collegiate Licensing Company. The "Collegiate Licensed Product" label is the property of the Independent Labeling Group. The NCAA Football logo is a registered trademark of the NCAA licensed to NCAA Football USA, Inc. All names, logos, team icons, and mascots associated with the NCAA, universities, bowls, and conference are the exclusive property of the respective institutions. Heisman Memorial Trophy and likeness of the actual trophy are registered service marks owned by the Downtown Athletic Club under registration numbers 936,853 and 935,852 respectively. Heisman and Heisman Trophy Award are service marks owned by the Downtown Athletic Club of New York City, Inc. ESPN is a trademark of ESPN, Inc. ESPN branded elements © Disney. Sega of America, Inc. 650 Townsend Street, Suite 650, San Francisco, CA 94103. Manufactured and printed in the USA.