



[www.konami-europe.com](http://www.konami-europe.com)

London Office, Jubilee House, 7/9 The Oaks, Ruislip, Middlesex, HA4 7LF	Paris Office, 23, Rue Cambon, 75001 Paris, France	Konami Of Europe GmbH, Bernstrasse 103-105, 60437 Frankfurt/Main, Germany	Madrid Office, Orense 34-9a 28020 Madrid, Spain	Amsterdam Office, Zandweg 33 3544 AA Utrecht Netherlands	Scandinavian Office, Langholmgatan 1b 11733 Stockholm Sweden
---	--	--	--	---	---

SLES-03532

PS and "PlayStation" are registered trademarks of Sony Computer Entertainment Inc.  
4012927010778



PAL



# Castlevania Chronicles

# PlayStation®

## Precautions

• This disc contains software for the PlayStation® home video game console. Never use this disc on any other machine, as it could damage it. • This disc conforms to PlayStation® specifications for the European market only. It cannot be used on foreign-specification versions of PlayStation®. • Read the PlayStation® Instruction Manual carefully to ensure correct usage. • When inserting this disc in the PlayStation®, always place it label side up. • When handling the disc, do not touch the surface. Hold it by the edge. • Keep the disc clean and free of scratches. Should the surface become dirty, wipe it gently with a soft cloth. • Do not leave the disc near heat sources or in direct sunlight or excessive moisture. • Never attempt to use a cracked or warped disc, or one that has been repaired with adhesives, as this could lead to operating errors.

## Health Warning

For your health, rest about 15 minutes for each hour of play. Avoid playing when tired or suffering from lack of sleep. Always play in a brightly lighted room, and stay as far from the television screen as possible. Some people experience epileptic seizures when viewing flashing lights or patterns in our daily environment. These persons may experience seizures while watching TV pictures or playing video games. Even players who have never had any seizures may nonetheless have an undetected epileptic condition. Consult your doctor before playing video games if you have an epileptic condition or immediately should you experience any of the following symptoms during play: dizziness, altered vision, muscle twitching, other involuntary movements, loss of awareness of your surroundings, mental confusion, and / or convulsions.

## PIRACY

The unauthorised reproduction of all or any game part of this product and the unauthorised use of registered trademarks are likely to constitute a criminal offence. PIRACY harms Consumers as well as legitimate Developers, Publishers and Retailers. If you suspect this game product is an unauthorised copy, or have any other information about pirate product, please call your local Customer Service number given at the back of this Manual.

See back page of this manual for Customer Service Nos.

**NOTICE**  
"Konami logo" and "KONAMI" are registered trademarks of KONAMI CORPORATION. "Castlevania Chronicles" is a trademark of KONAMI CORPORATION. © 1986-2001 KONAMI & KONAMI COMPUTER ENTERTAINMENT TOKYO. ALL RIGHTS RESERVED. For home use only. Unauthorised copying, adaptation, rental, lending, re-sale, arcade use, charging for use, broadcast, cable transmission, public performance, distribution or extraction of this product or any trademark or copyright work that forms part of this product are prohibited. Published by Konami of Europe GmbH. Developed by Konami Computer Entertainment Tokyo.

European packaging designed © department x



SLES-03532

2

## Contents

3	Story
5	Controls
7	Sound Test
8	Game Play
9	Screen Layout
10	Game Modes
13	Save/Load
14	Options
15	Items
17	Map
19	Previous Artwork
23	Notes

## Story

TRANSYLVANIA, A SMALL, PEACEFUL COUNTRY IN THE HEART OF MEDIEVAL EUROPE.

IN THIS COUNTRY, THERE IS AN OLD LEGEND CONCERNING DRACULA.

"ONCE EVERY 100 YEARS, THE POWER OF CHRIST GROWS WEAK. EACH TIME THIS HAPPENS, HUMAN BEINGS WITH EVIL HEARTS BEGIN TO CHANT UNSPEAKABLE PRAYERS. THIS IS DRACULA, THE PRINCE OF DARKNESS, RESURRECTED. UPON THE FACE OF THE EARTH, AND EACH TIME HE IS MANIFESTED, HIS POWERS GROW STRONGER."

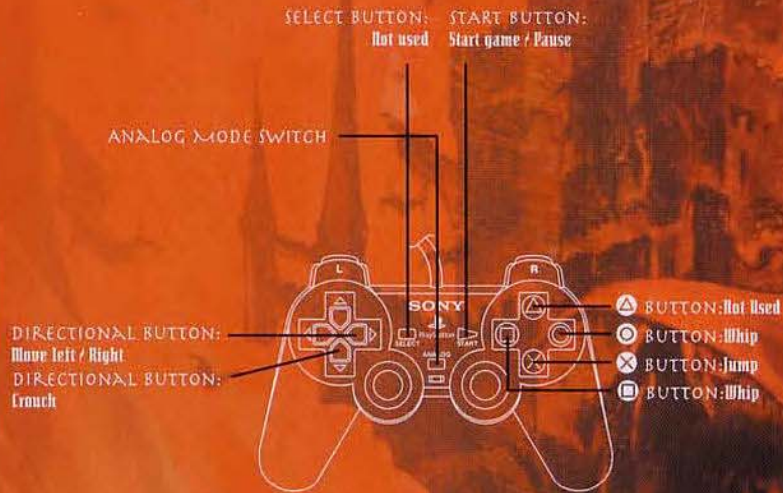
ONCE, LONG AGO, DRACULA WAS INDEED REVIVED IN THIS MANNER. HOWEVER, HIS AMBITIONS TO PLUNGE THE WORLD INTO DARKNESS AND BUILD A KINGDOM OF EVIL WERE CRUSHED BY THE HERO CHRISTOPHER BELMONT.

FOLLOWING DRACULA'S DEMISE AT THE HANDS OF CHRISTOPHER BELMONT, THE TRANSYLVANIAN COUNTRYSIDE SLEPT PEACEFULLY FOR 100 YEARS. THEN...

ONE EASTER NIGHT, THE TOWNSPEOPLE WERE COMMEMORATING CHRIST'S RESURRECTION WITH A SPLENDID CARNIVAL. BUT, IN THE RUINS OF THE OLD MONASTERY ON THE EDGE OF TOWN, THE FOLLOWERS OF DARKNESS WERE HOLDING A BLACK MASS TO REVIVE THE EVIL COUNT AND GIVE HIM ETERNAL LIFE. THEY Poured A SACRIFICE OF HUMAN BLOOD OVER HIS REMAINS. AS THEY DID SO, AN EVIL THUNDERCLOUD ENVELOPED THE TOWN. SUDDENLY, A SINGLE BOLT OF LIGHTNING PIERCED THE MONASTERY. IN THAT INSTANT, DRACULA, THE PRINCE OF DARKNESS, RETURNED TO THIS WORLD TO BEGIN A NEW REIGN OF TERROR.

BUT ALL WAS NOT LOST. THE SUCCESSOR TO THE BELMONT FAMILY BLOODLINE, A YOUNG MAN BY THE NAME OF SIMON, WAS DETERMINED TO RID THE LAND OF THIS TERRIBLE EVIL. TAKING THE MYSTERIOUS WHIP LEFT TO HIM BY HIS FATHER, HE VENTURED INTO DRACULA'S CASTLE TO FACE THE COUNT - ALONE.

## CONTROLS: Analog Controller



RIGHT DIRECTIONAL BUTTON AND × BUTTON  
*Right diagonal jump*

LEFT DIRECTIONAL BUTTON AND × BUTTON  
*Left diagonal jump*

DIRECTIONAL BUTTON DOWN AND ○ BUTTON OR □ BUTTON  
*Crouch and whip*

× BUTTON AND ○ BUTTON OR □ BUTTON  
*Jump and whip*

DIRECTIONAL BUTTON UP AND ○ BUTTON OR □ BUTTON  
*Use item while jumping (× button)*

DIRECTIONAL BUTTON DOWN AND ○ BUTTON OR □ BUTTON  
*While jumping whip straight down*

DIRECTIONAL BUTTON RIGHT AND ○ BUTTON OR □ BUTTON  
*While jumping whip down/right*

DIRECTIONAL BUTTON LEFT ○ BUTTON OR □ BUTTON  
*While jumping whip down/left*

PRESS THE START AND SELECT BUTTONS SIMULTANEOUSLY TO RESET THE GAME.

**Standard Controller**

THE CONTROLS FOR THE STANDARD CONTROLLER ARE THE SAME AS FOR THE ANALOG CONTROLLER.

## Sound Test



YOU CAN ONLY ACCESS THE SOUND TEST IN ORIGINAL MODE. WHEN THE TITLE MENU IS DISPLAYED, CHOOSE "SOUND MODE" USING THE DIRECTIONAL BUTTONS AND PRESS THE **X** BUTTON TO ENTER SOUND TEST MODE.



SELECT THE TUNE WITH THE LEFT AND RIGHT DIRECTIONAL BUTTONS AND PRESS THE **X** BUTTON TO PLAY YOUR SELECTION.

SELECT EXIT TO RETURN TO THE GAME.

## Game Play

THE GAME IS DIVIDED INTO 8 BLOCKS (EACH BLOCK CONSISTS OF 3 STAGES.) A BOSS ENEMY AWAITS AT THE END OF EACH BLOCK. WHEN YOU DEFEAT A BOSS, A MAGICAL ENERGY SPHERE WILL APPEAR. GRAB IT TO ADVANCE TO THE NEXT BLOCK.

WHEN YOU RECEIVE DAMAGE, YOUR LIFE WILL DECREASE. IF YOU LOSE ALL YOUR LIFE, FALL INTO A PIT, COME INTO CONTACT WITH A LETHAL TRAP, OR FAIL TO FINISH THE BLOCK WITHIN THE TIME LIMIT, YOU WILL LOSE A LIFE. THE GAME ENDS WHEN YOU LOSE ALL YOUR LIVES. HOWEVER, YOU MAY USE THE CONTINUE OPTION TO START AGAIN FROM THE BEGINNING OF THE CURRENT BLOCK.

WHEN YOU USE YOUR WHIP OR AN ATTACK ITEM TO DEFEAT AN ENEMY OR DESTROY A CANDLE, AN ITEM WILL OFTEN APPEAR. COLLECTING THESE ITEMS WILL GIVE YOU BONUSES SUCH AS POWER-UPS OR SPECIAL ATTACKS. THE NUMBER OF TIMES YOU CAN USE A SPECIAL ATTACK IS LIMITED BY THE NUMBER HEARTS YOU POSSESS.

## Screen Layout

PLAYER'S LIFE GAUGE

NUMBER OF HEARTS

TIME REMAINING

ITEM

SCORE

STAGE NUMBER



BOSS'S LIFE GAUGE

LIVES REMAINING

PLAYER

ENEMY

## Game Modes

THERE ARE TWO MODES OF PLAY IN THE GAME.

### Original Mode

AN EXACT REPRODUCTION OF THE X68000 VERSION OF "CASTLEVANIA".

### Arrange Mode

BASED ON THE X68000 VERSION, SIMON AND DRACULA HAVE BEEN REDESIGNED WITH A BRAND NEW LOOK, AND THE DIFFICULTY LEVEL HAS BEEN MADE EASIER.

CHOOSE ONE OF THESE TWO MODES AND PRESS EITHER THE START BUTTON OR THE X BUTTON TO BEGIN.

Original Mode



Arrange Mode



ONCE YOU'VE BEATEN THE GAME IN ARRANGE MODE, AN ADDITIONAL TIME ATTACK MODE WILL BECOME AVAILABLE. TRY TO CLEAR EACH STAGE IN THE SHORTEST TIME POSSIBLE.



NEED HELP WITH

# Castlevania Chronicles™

KONAMI UK  
HOTLINE NUMBER

Calls cost 75p per minute. Please obtain bill payer's permission before calling. Over 16's only

**09067 53 50 70**

## Save/Load

USING THE "SAVE" OPTION ON THE GAME OVER SCREEN, YOU CAN SAVE YOUR GAME DATA, INCLUDING HOW FAR IN THE GAME YOU'VE PROGRESSED AND HOW MANY TIMES YOU'VE PLAYED.

INSERT A MEMORY CARD INTO MEMORY CARD SLOT 1.

MEMORY CARD SLOT 2 CANNOT BE USED WITH THIS GAME.

### Save

WHEN YOUR GAME IS OVER, YOU CAN SELECT "CONTINUE" OR "SAVE". CHOOSING "SAVE" WILL SAVE YOUR GAME DATA. CHOOSING "CONTINUE" WILL ALLOW YOU TO CONTINUE YOUR GAME FROM THE BEGINNING OF THE CURRENT BLOCK. PLEASE DO NOT REMOVE THE MEMORY CARD OR TURN OFF THE POWER WHILE SAVING DATA.

### Load

IF THERE IS SAVED GAME DATA PRESENT, THE SAVED GAME NAME(S) WILL APPEAR WHEN YOU ENTER THE MODE SELECT SCREEN FROM THE TITLE SCREEN. SELECTING A GAME NAME WILL ALLOW YOU TO CONTINUE THE GAME FROM THE BLOCK WHERE YOU LEFT OFF.



## Options

THIS ALLOWS YOU TO CHANGE VARIOUS GAME SETTINGS.

### BGM (ON / OFF)

CHANGE THE BACKGROUND MUSIC SETTING BETWEEN OFF, MONO, AND STEREO.

### SE (ON / OFF)

TURN THE SOUNDS EFFECTS ON/OFF.

### LOAD

LOAD GAME DATA.

### SAVE

SAVE GAME DATA.

### Arrange Options

CHANGE VARIOUS SETTINGS IN ARRANGE MODE.

### GAME LEVEL

(EASY / NORMAL / HARD)

ADJUST THE LEVEL OF DIFFICULTY IN THE GAME.

### MAX PLAYERS (1 / 2 / 3)

CHANGE THE MAXIMUM NUMBER OF LIVES.

### TIME LIMIT (ON / OFF)

TURN THE TIME LIMIT ON/OFF.

### DISPLAY ADJUST

ADJUST THE GAME SCREEN'S DISPLAY POSITION.





## Items



**Pocket Watch**  
FREEZES ALL ENEMIES ON THE SCREEN. (WILL NOT WORK ON BOSSES FROM BLOCK 3 ONWARD.)



**Danger**  
WEAK, BUT FAST. FLIES IN A STRAIGHT LINE TOWARD THE ENEMY.



**Big**  
STRONG, BUT SLOW. FLIES IN AN ARC PATTERN.



**Holy Water**  
STRONG, BUT SLOW. EXPLODES INTO FLAMES WHEN THROWN ONTO THE FLOOR.



**Cross**  
SLOW, BUT EXTREMELY POWERFUL. RETURNS TO YOU AFTER IT HITS A WALL OR ANOTHER OBSTACLE.



**Heart**  
INCREASES YOUR STOCK OF HEARTS BY 1.



**Big Heart**  
INCREASES YOUR STOCK OF HEARTS BY 5.



**Invisibility Ointment**  
RENDERS YOU INVINCIBLE FOR A PERIOD OF TIME.



**Chain Whip**  
INCREASES THE POWER OF YOUR WHIP. (2 LEVELS)



**Money Bag**  
RED BAG (100 POINTS)  
BLUE BAG (400 POINTS)  
WHITE BAG (700 POINTS)



**Meat**  
RESTORES YOUR HEALTH.



**Double Shot**  
ALLOWS YOU TO USE ATTACK ITEMS TWICE CONSECUTIVELY.



**Triple Shot**  
ALLOWS YOU TO USE ATTACK ITEMS THREE TIMES CONSECUTIVELY.



**1-Up**  
GIVES YOU AN EXTRA LIFE.

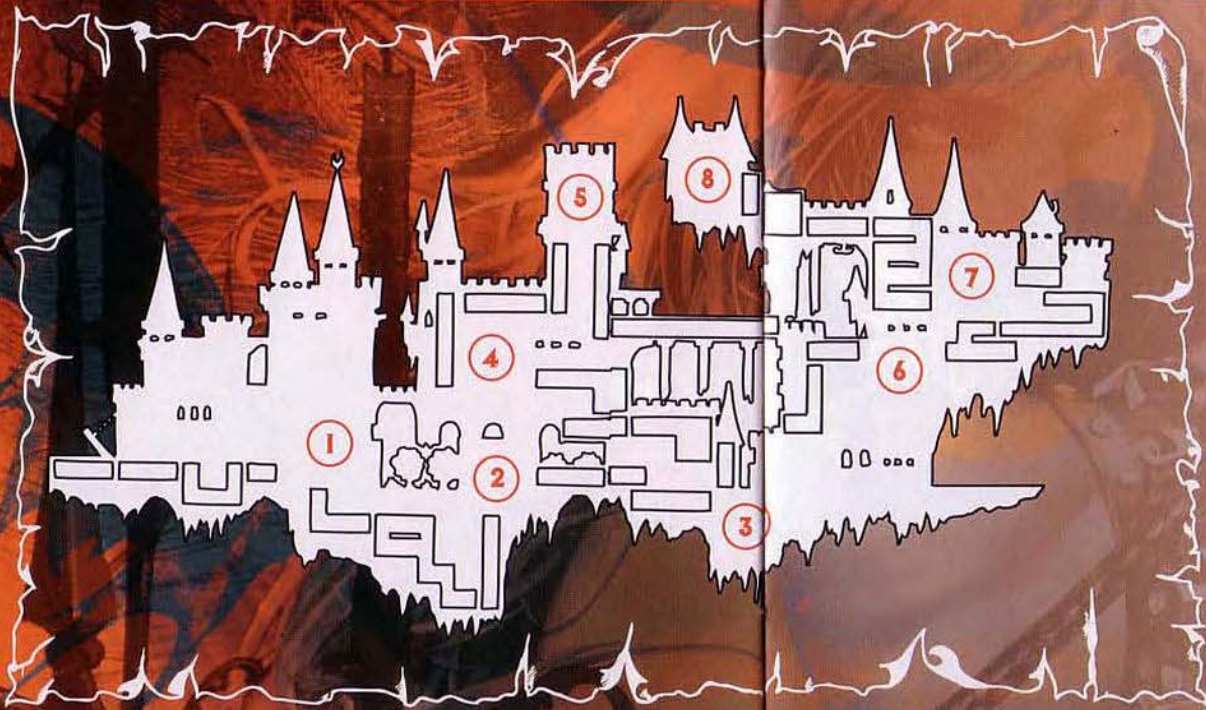


**Herb**  
RESTORES YOUR HEALTH AT THE COST OF SOME HEARTS.

Items will disappear after a fixed period of time.

When you run out of Hearts, you can no longer use Attack Items.

## Map



Block 1  
THE MONASTERY

Block 2  
THE UNDERGROUND AQUEDUCT

Block 3  
THE COURTYARD

Block 4  
THE RED-BRICK CATHEDRAL

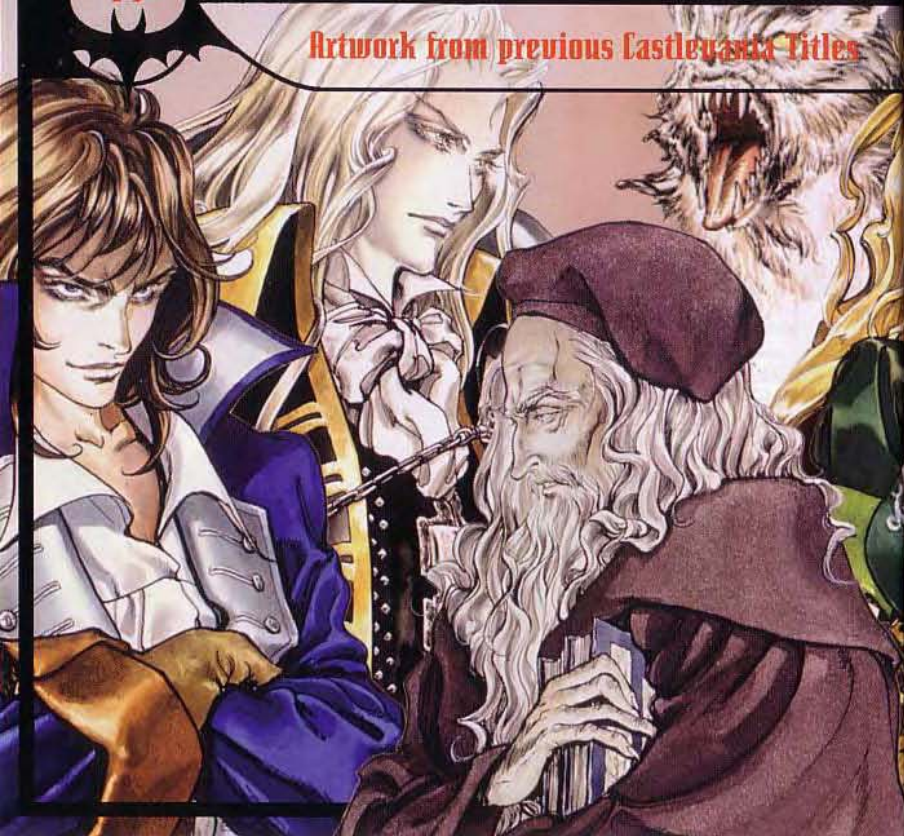
Block 5  
THE CLOCK TOWER

Block 6  
THE FLOATING CORRIDOR

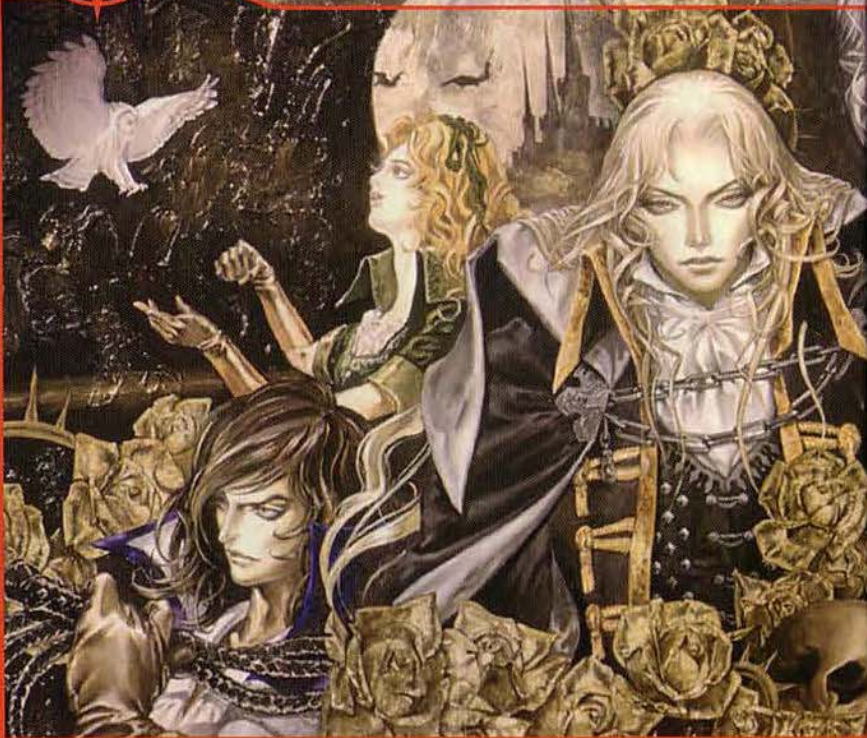
Block 7  
THE TORTURE CHAMBER/LABORATORY

Block 8  
COUNT DRACULA'S TOWER

## Artwork from previous Castlevania titles



Artwork from previous Castlevania titles







## Customer Service Numbers

• Australia	1902 262 662	<i>Calls charged at \$1.65 (incl. GST) per minute.</i>
		Please call these Customer Service Numbers only for PlayStation Hardware Support.
• Österreich	0450 99 000 500	<i>Der Anruf unter dieser Nummer kostet max. 41 Groschen/Sek.</i>
		Bei allen Fragen rund um die PlayStation kontaktieren Sie bitte den Kundenservice.
• Belgique/België/Belgien	011 301 306	<i>Veuillez appeler notre service clientèle à ces numéros seulement pour une assistance technique concernant la PlayStation.</i>
• Danmark	+45 33 26 68 20	<i>Åben Man-Tors 16.00-19.00</i>
		Du bedes ringe til dette kundeservicenummer for support til din PlayStation.
• Suomi	0600 411 911	<i>*4,70 fim/min + ppm avoinna ark 17-21*</i>
		Soita näihin asiakaspalvelunumeroihin vain PlayStation-laitteistotukea varten
• France	0803 843 843	<i>Veuillez appeler notre service clientèle à ces numéros seulement pour une assistance technique concernant la PlayStation.</i>
• Deutschland	01805 / 766 977	<i>Bei allen Fragen rund um die PlayStation kontaktieren Sie bitte den Kundenservice.</i>
• Greece	(00 301) 6777701	<i>Παρακαλούμε να καλείτε αυτά τα Τηλέφωνα Εξυπηρέτησης Πελατών μόνο για τεχνική υποστήριξη για την κονσόλα PlayStation</i>
• Ireland	(01) 4054022	<i>Please call these Customer Service Numbers only for PlayStation Hardware Support.</i>
• Italia	848 82 83 84	<i>Chiamare i numeri dell'assistenza clienti solo per problemi tecnici riguardanti l'hardware della PlayStation.</i>
• Nederland	0495 574 817	<i>Wij verzoeken u deze klantenservicenummers alleen te bellen indien u advies wilt vragen over PlayStation apparatuur.</i>
• New Zealand	(09) 415 2447	<i>Please call these Customer Service Numbers only for PlayStation Hardware Support.</i>
• Norge	2336 6600	
• Portugal	(01) 318 7450	<i>Por favor, contacte os seguintes números do nosso Serviço de Atendimento ao Cliente se tiver alguma dúvida ou problema com qualquer produto de hardware PlayStation</i>
• España	902 102 102	<i>Por favor, llama a los siguientes números de nuestro Servicio de Atención al Cliente si tienes problemas con cualquier producto de hardware relacionado con la PlayStation.</i>
• Sverige	08-587 610 00	<i>Vänligen ring följande kundtjänstnummer enbart om problem uppstår på PlayStations programvara.</i>
• Schweiz/Suisse	0900 55 20 55	<i>Ein Anruf kostet Fr. 1. -/min.</i>
		<i>Kinder und Jugendliche sollten vor dem Anrufen der Hotline die Eltern oder Erziehungsberechtigten um Erlaubnis fragen</i>
• UK	08705 99 88 77	
		Please call these Customer Service Numbers only for PlayStation Hardware Support