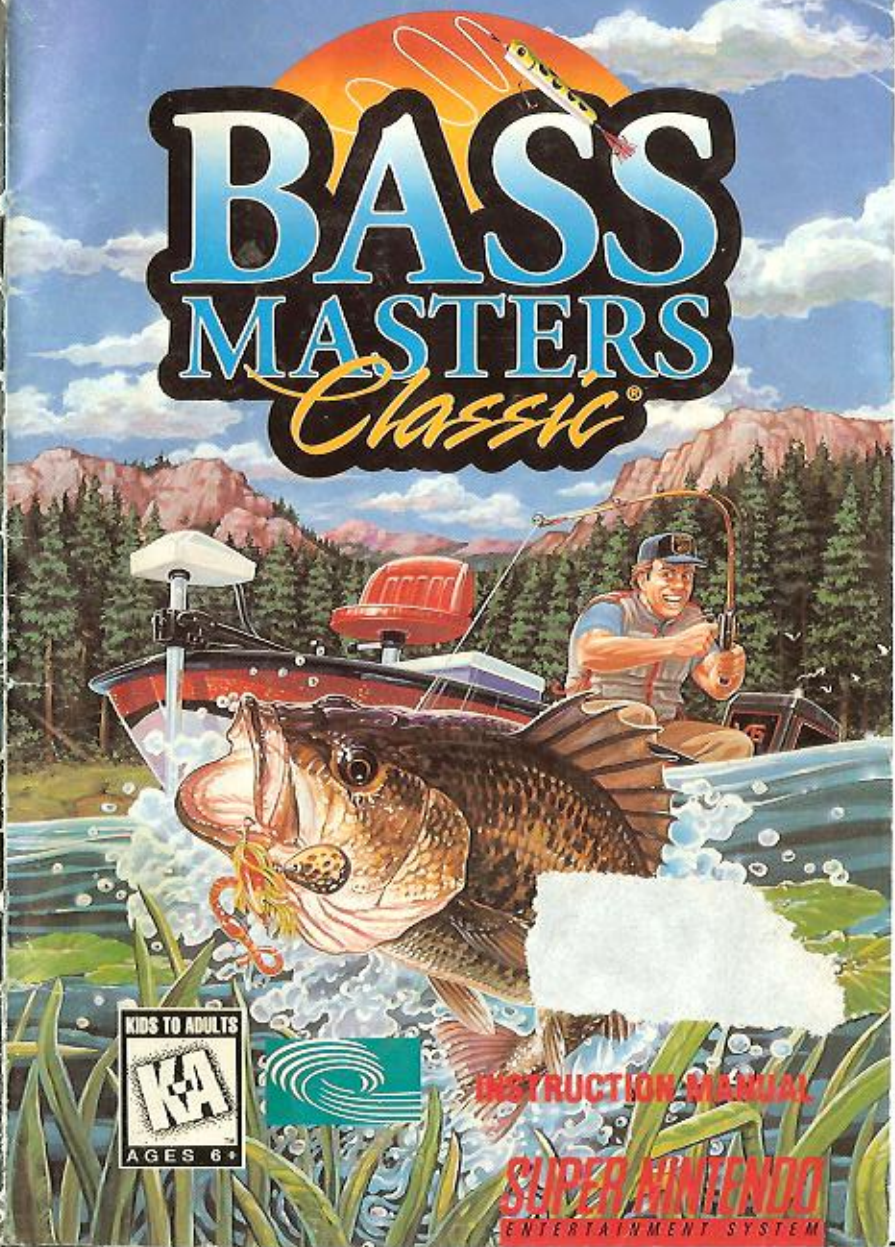


BASS MASTERS *Classic*



T•HQ, INC.
5016 North Parkway Calabasas, Suite 100
Calabasas, CA 91302

Bass Masters Classic® and Bass Anglers Sportsman Society® are registered trademarks of B.A.S.S., Inc. Malibu Games is a division of THQ, Inc. ©1995 THQ, Inc.

PRINTED IN USA



INSTRUCTION MANUAL

SUPER NINTENDO
ENTERTAINMENT SYSTEM

WARNING: PLEASE READ THE ENCLOSED CONSUMER INFORMATION AND PRECAUTIONS BOOKLET CAREFULLY BEFORE USING YOUR NINTENDO® HARDWARE SYSTEM OR GAME PAK.

THIS PRODUCT HAS BEEN RATED BY THE ENTERTAINMENT SOFTWARE RATING BOARD. FOR INFORMATION ABOUT THE ESRB RATING, OR TO COMMENT ABOUT THE APPROPRIATENESS OF THE RATING, PLEASE CONTACT THE ESRB AT 1-800-771-3772.

*Dedicated to the
memory of Bryan Kerchal,
winner of the 1994
BASS Masters Classic®*



LICENSED BY

Nintendo

NINTENDO, SUPER NINTENDO
ENTERTAINMENT SYSTEM
AND THE OFFICIAL SEALS ARE
REGISTERED TRADEMARKS OF
NINTENDO OF AMERICA INC.
©1991 NINTENDO OF AMERICA INC.

THIS OFFICIAL SEAL IS YOUR
ASSURANCE THAT NINTENDO HAS
APPROVED THE QUALITY OF THIS
PRODUCT. ALWAYS LOOK FOR THIS
SEAL WHEN BUYING GAMES AND
ACCESSORIES TO ENSURE
COMPLETE COMPATIBILITY. ALL
NINTENDO PRODUCTS ARE
LICENSED BY SALE FOR USE
ONLY WITH OTHER AUTHORIZED
PRODUCTS BEARING THE OFFICIAL
NINTENDO SEAL OF QUALITY.



Bass Anglers Sportsman Society®
MEMBERSHIP APPLICATION

Special Introductory Offer

Over half a million anglers enjoy the benefits of B.A.S.S. membership — FREE renewal gifts, free fishing information services, B.A.S.S. chapters, tournament participation, and much more — including the ultimate B.A.S.S.® benefit, a yearly subscription to BASSMASTER® Magazine. Packed with information on tackle, tips and techniques, every one of your 10 big issues of BASSMASTER has one purpose: to help you become a better bass angler.

And now, through this special introductory offer, B.A.S.S. Membership and all of its privileges can be yours for the low price of only \$14.00. That's a savings of \$6.00 off the regular \$20.00 annual fee.

So join now and start receiving your benefits immediately at this great low price.

Ray Scott

**SAVE
30%**



Bass Anglers Sportsman Society®

YES! I want to be a better bass fisherman. Please enroll me as a new member of the Bass Anglers Sportsman Society. I understand my membership benefits, including BASSMASTER® Magazine, will start immediately. If I am not completely satisfied, I'll return my membership packet and you will promptly refund my dues for the unused portion of my membership.

ENROLL ME FOR A ONE YEAR FEE OF ONLY \$14.00
(A \$6 savings off the regular membership fee of \$20)

Payment enclosed Bill me
(Foreign memberships — \$30.00)

CXM-CX1

Name _____

Address _____

City _____ State _____ ZIP _____

Signature _____

Mail to Bass Anglers Sportsman Society®
P.O. Box 17116 • Montgomery, AL 36151-0116

CONTENTS

Welcome Anglers!	2
Getting Started	2
The Anglers	3
Around the Dock Area	6
The Bait Shop	7
Controls	25
Game Screen	27
Practice Pond	29
Go Fish! Tournament Rules	30
Sponsors	33
Fishing Notes	34
Limited Warranty	35

WELCOME ANGLERS!

Welcome to the BASS Masters Classic®. Name's Hank. Think of me as your unofficial host. I'll tell you what you need to know. This tour consists of five three-day tournaments at five lakes. First one's at Pebble Lake. You'll see my bait shop there and get to know your way around the dock area, but first you'll need to take care of a few things.



2 GETTING STARTED

Make sure the power to your Super Nintendo Entertainment System is turned OFF. Insert the BASS Masters Classic® game, then turn the power ON. You'll see the BASS Masters Classic® title screen.

After you've exited the title screen by pressing the START Button, you'll see the tournament rules. Press the START

Button to continue reading the rules or press the B Button to exit.

After you've exited the tournament rules screen you'll see the **New Game** signpost highlighted. Press START to begin a new game. If you've saved a game, you may choose **Load Game** by pressing the Control Pad DOWN to highlight it, then press the START Button.



THE ANGLERS

It will help if we both know who you are. Choose a player identity by scrolling through the six anglers and their bios by pressing the Control Pad RIGHT. When you find yourself, press the START Button.

Here's what I think of them:



Clyde Casey

Former Olympic arm-wrestler. Sets the hook so hard he once uprooted a tree his bait snagged. Where does he fish? Anywhere he wants.

Charlie Chum

A believer in fish attractants — Charlie eats anchovies for breakfast and washes his hands in Fish Formula. Pulls in bass like a magnet.



Cory "Cowboy" Crispen

A champion calf-roper, he can cast farther than any other angler. Calls bass "doggies" and has a saddle mounted on the bow of his Ranger®.



Willie "the Kid" Emerson

Began reading BASS-MASTER® Magazine in kindergarten. At 16 he's the youngest angler on the pro circuit and he has incredible endurance.

Zoe Shelby

The most attractive angler on the pro circuit — to bass, at least. Fish are so eager for her to "lip" them, they'll hit any lure she offers.



Hooker B. Sharp

Uses chemically sharpened hooks so sharp it's dangerous to look at them. If a bass comes near his bait, it's stuck for good.



AROUND THE DOCK AREA

Now you're in the Dock Area, the place where all the action starts.

You can go to:

- Bait Shop
- Practice Pond
- Tournament (Go Fish)
- Tourney Info screen
- Weigh-In screen
- New Game screen
- Password screen

Press the Control Pad RIGHT or LEFT to go to each of these spots and press the B Button to select into one of them. I recommend that you step into my shop — you'll get lots of important advice there.

6

THE BAIT SHOP

Come on in and get everything you need plus some stuff you don't. I'll tell you what's what and how much it will cost you. Listen to me. I'll take good care of you.



To get around my shop, press the Control Pad RIGHT or LEFT, then press the B Button when you want to look at something. You'll see the following option signs:



Lures

Purchase a wide range of lures perfect for all types of fishing situations.

Rods

I've got plain and I've got high-tech equipment, whatever your pleasure.

7

Fishing Lines

Mono, co and monster tri — all the kinds you need to get a big one out of the pond.

Engines

Evinrude® and Johnson® are the best in the business and I've got them for you.

Reels

These will spin them around and give that fish the ride of its life.

Fishfinders

These are some of the hi-tech pieces of equipment that can be purchased at my bait shop. They can save you a lot of time.

Talk

- Sit down and talk a while with old Hank. Talk's cheap — it's free!

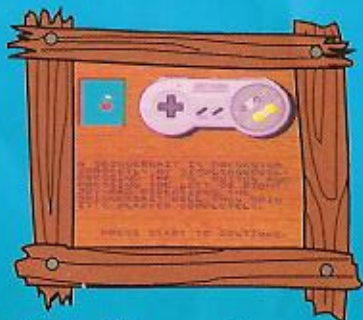
Fishing Options

Leave my shop and head back outside to the Dock Area.

- 8 To buy equipment, press Control Pad DOWN to purchase the Item, then press the B Button. You'll see the dollar amount of the item get subtracted from your prize purse and then you'll see your tackle box filling up.

To get more of my advice on something, press the Control Pad DOWN to get Help For The Item, then press the B Button.

Always press the B Button after highlighting Bait Shop options to back out of looking at an item.



TALK...WITH HANK!

Go on, choose Talk if you want some advice from an old angler. I'll share my knowledge with you, no problem. On the house, even.

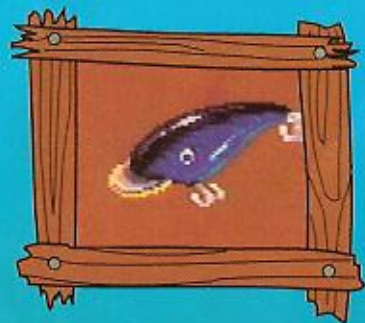
9



LURES

Before you head out on the Practice Pond or into the Tourney, pick up all the lures you might need and put them into your tackle box. After you buy

them, you'll see your tackle box filling up!



Crankbaits — A Sawbuck (\$5.00)

3-8 ft. range

8-15 ft. range

15-20 ft. range

20-40 ft. range

Tip:

These popular lures will dive when cranked and then float at rest. Some big bass have been snagged with crankbaits.

How To:

A crankbait is presented correctly by simultaneously pressing the A and/or B Button and pressing the Control Pad DOWN/LEFT or DOWN/RIGHT.



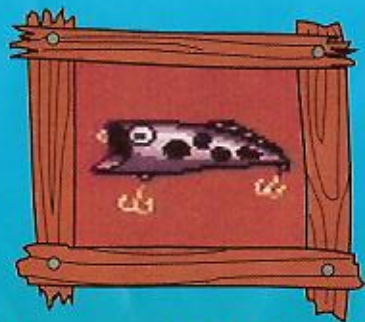
Grub — A Five Spot (\$5.00)

Tip:

A deep-water lure, grubs can prove invaluable when going for those deep lurking lunkers.

How To:

A grub bait is presented correctly by simultaneously pressing the A and/or B Button and pressing the Control Pad UP/LEFT or UP/RIGHT. The grub will pulse vigorously.



Popper — A Fiverino (\$5.00)

Tip:

For water from 0 - 10 feet. Aggravate the bass with this noisy topwater lure. A good way to fire up lethargic lunkers loafing around the lake bottom.

How To:

A popper is presented correctly by simultaneously pressing the A and/or B Button and the Control Pad in the UP direction. The popper will then bob up and down and make a popping noise.



Spinnerbait — A Simple Sawbuck (\$5.00)

Tip:

For water 1 - 25 feet. Easy to use and an award-winning bait, spinners reflect light off their spinning blade and attract bass well. Effective in heavy cover in shallow water.

How To:

A spinner is presented correctly by simultaneously pressing the A and/or B Button and pressing the Control Pad LEFT or RIGHT. The spinnerbait will then spin its blade completely.

Worms — Five Buckaroos (\$5.00)



The light worm works best in clear waters.

The dark worm is best used in dark murky waters.



The scented worm gives off an odor that some bass will like.

Tip:

Worms are a tried and true method of taking bass from deep water. Choose from light, dark and scented. When combined with a little worm oil, the results can be deadly...for lunkers! An all-around bait.

How To:

A worm bait is presented correctly by simultaneously pressing the A and/or B Button and pressing the Control Pad in the DOWN direction. The worm will squirm!



Jigs — Five Clams (\$ 5.00)

For water 5-25 feet. A heavy, lead-headed bait with a single hook, jigs can be fished effectively in a dense cover where big bass live without getting snagged.

How To:

Press the A and/or B Button and either UP or DOWN on the Control Pad simultaneously and the jig will bob up and down rapidly.

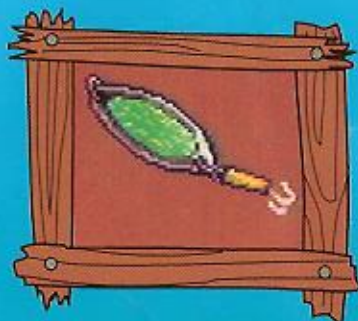


**Tailspinner — Five George Washingtons
(\$ 5.00)**

For water 15-50 feet. A heavy vibrating lure that sinks and can be fished in extremely deep water, it produces an intense tight vibration when reeled in fast.

How To:

Press the A and/or B Button and the either RIGHT or LEFT on the Control Pad simultaneously and the tailspinner will spin rapidly.



**Jigging Spoons — One Abe Lincoln
(\$5.00)**

For water 15-40 feet. A good all-around lure that works well in very deep water as well as an effective topwater lure when retrieved fast.

How To:

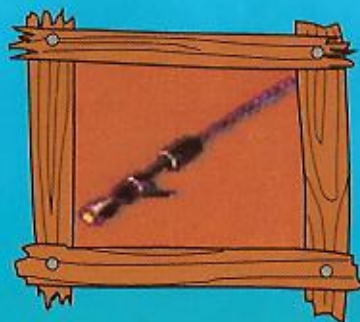
Press the A and/or B Button and DOWN on the Control Pad simultaneously and the spoonbait will rock back and forth.



Fishing Line

If you're going to get the best boat, rod, reel, electronics and lures, don't rely on second-rate line to catch your bass. Different lines have different strengths.

- Mono 10 lb. — A Georgy Porgy (\$5.00)
- Mono colored 20 lb. — A Ten Spot (\$10.00)
- Cofilament 30 lb. — Fifteen Tons (\$15.00)
- Cofilament colored 40 lb. — An Andy Jackson (\$20.00)
- Monster trifilament iron mesh day-glo 100 lb. — Fifty Clams (\$50.00)



Rods

The fishing rod is perhaps the most crucial element to the fishing experience. Make it count!

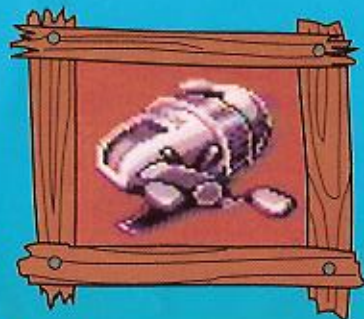
How To:

To hook a fish, pull back on your rod by pressing the Control Pad in the DOWN direction as soon as you hear the "bark" snapping noise. Use a "Power Move" after you have hooked a fish and the fish is swimming away from you, by pressing RIGHT or LEFT on the Control Pad. This will turn the fish in the direction that you are pulling.

Fiberglass Flexorod — Twenty-five Cold Ones (\$25.00)

Graphite Gung Ho — The Big Green One (\$100.00)

Boron Bassace — Three Hundred Smackers (\$300.00)



Reels

Don't get caught fishing for adult bass with a small reel. Buy something worth attaching to your rod and get yourself a luncker!

How To:

For a slow reel-in, press the A Button. Press the B Button for a normal reel-in. To do a quick reel-in, press the A Button and the B Button simultaneously. Be careful, because if a fish is hooked, the line will cut and you'll lose your lure. Press the A and Y Buttons simultaneously for an automatic reel-in.

- Push Button Spincast Reel — Twenty-Five Big Pieces of Cold, Hard Cash (\$25.00)

- 20 Rear Drag Spinning Reel — Fifty Big Ones (\$50.00)

Baitcasting Reel — One and a Quarter Ben Franklins (\$125.00)



Fishfinders

Your fishing stuff won't do you much good if you can't find the fish, will it?

How To:

Fishfinders make a sonar "blip" when the boat is directly over fish. You should note that location on the overhead map and then move your boat a little ways from the location, then cast into the noted area.

Eagle™ Supra Pro I.D. — Ninety-five Greenbacks (\$95.00)

Lowrance® X-70A LCD — Four hundred eighty Buckeroos (\$480.00)

Eagle™ Ultra 2 Split Screen LCD — Three hundred Hot Potatoes (\$300.00)

NOTE: Press the Control Pad UP or DOWN to scroll the fishfinder view screen.

Lowrance® LMS-350 LCD — Eight hundred Big Ones (\$800.00)

NOTE: Press the Control Pad DOWN to review the last fifty readings.



Engines

A faster engine lets you make better time across the lake. Remember, every minute your competitors are gaining on you. How can you get around the lake and through the thick cover without a kicker of an engine?

How To:

- The B Button moves the boat forward, the A Button moves the boat backward. Steer the boat with the Control Pad directions LEFT and RIGHT. You'll get the hang of it!

- Johnson® 70 HP — \$6,900.00

- Evinrude® Intruder 150 — \$11,200.00

- Johnson® Venom 225 — \$13,300.00

- Evinrude® 50 HP Outboard — \$5,400.00



Weigh In

Go on, see how you stack up against the other anglers. Just press the Control Pad DOWN to move to Weigh In,

then press the B Button.

New Game

This selection will take you to the Start screen if you want to begin a new game or enter a new password.



Password

At the Exit sign, press the B Button and you can get a password so you can come back to the Tournament later on when

you're ready. Passwords allow you to start at the beginning of each day for that lake with the same items and money. If you want to start a whole new tourney, press the B Button. A new game will begin.



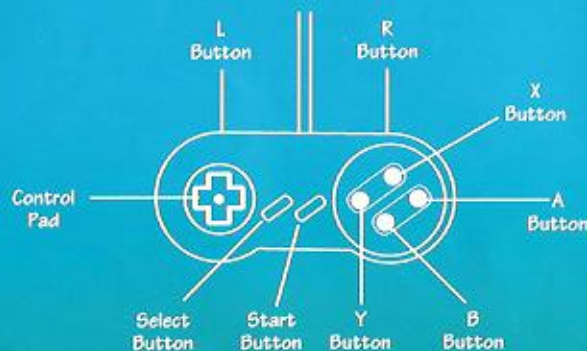
Tourney Info

Over here you can see important things like: what temperature it is; water conditions; your limit for the day; how many

competitors you have; everybody's current standings; where your boat is on the overhead lake map and, (in case you stayed up a bit too late last night) the name of the lake you're on and what day of the Tournament it is.



CONTROLS



You'd better memorize these controls if you want to catch the big one!

START Button Start game.
Pause game.

Note: If the game is paused for an extended period of time, the music will reduce in volume and the screen will fade.

A Button Drive boat backward.

B Button Drive boat forward.

Y Button Cast rod.

Controls for reeling in a fish are under Reels on page 20.

To cast, press the Y Button to aim, then press the Y Button again to cast. You can move the rod once you've aimed by pressing the Control Pad LEFT and RIGHT.

Note: You must press the Y Button two times, once to begin the power meter and again to cast the line.

Control Pad LEFT/RIGHT

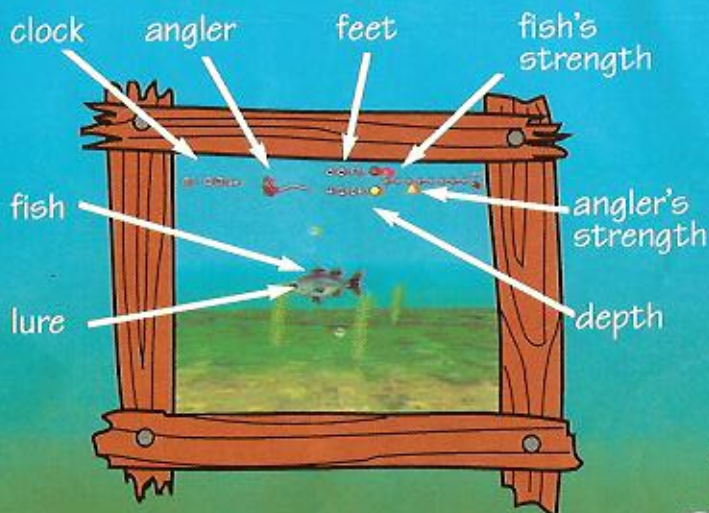
Steer boat in that direction.

Control Pad LEFT/RIGHT/UP/DOWN

Move fishing pole in that direction.

When on the lake, press the X Button to bring up the Option Screen so you can get tournament information, go to your tackle box or toggle the music on or off. Press LEFT or RIGHT on the Control Pad to cancel this option.

GAME SCREEN



In either Practice or Tourney, you'll see the same game screen when you are fishing:

Clock

Shows what time it is so you can keep track. (Tourney only)

Angler

See how you're struggling against that big one.

Feet

Tells you how far out your lure is.

Fish's Strength

Gives you some idea of how much fight the bass has left in him. As he gets weaker, the circle's red color fades.

Angler's Strength

Gives you some idea of how much strength your angler has left. As your angler gets weaker, the circle's yellow color fades.

Fish

Pretty self-explanatory.

Lure

Shows you which one of your lures the bass has bitten.

Depth

- The depth indicates how deep the lure is.

28

PRACTICE POND

In the Practice Pond, practice your technique so when you go to Tournament you'll be ready. There's no clock, so don't worry about the time you're spending practicing, just catch those lunkers!



29



GO FISH! TOURNAMENT RULES



Now that you're ready for some real fishing, you'd better familiarize yourself with the rules so you know what to do.

1. Hours:

Tournament hours run from 7:00 am to 3:00 pm.

2. Days:

Each Tournament consists of three days at each lake.



3. **Livewell:** Can hold up to five bass at any one time. If you catch a bass that is larger than your fifth bass, that fifth bass will be culled (thrown back). Fish that are not bass will not go into the Livewell or be counted toward your total weight. All of these fish will be released back into the water.



4. **Rankings:** Your rank is determined by the total weight of the five largest bass you catch and successfully bring to the weigh-in area at the end of each day. Each day's total is added to the previous day's for your overall ranking. You must place high enough at the end of each Tournament to advance.

Qualifications are shown at the beginning of each tournament.

5. Size Limits:

Each bass must be 15 inches in length to be legal. If the bass is not 15 inches long, it will automatically be released.

6. Late Penalties:

If you arrive at the weigh-in after 3:00 pm, two ounces for each minute you are late will be subtracted from your total. If you arrive at the weigh-in after 3:20 pm you will be disqualified for that day.

32

BASS MASTERS CLASSIC® SPONSORS

Ranger
BOATS

Ranger
Trail

EVINRUDE
OUTBOARDS

Johnson
OUTBOARDS

The Most Dependable, Longest-Lasting Trucks.
CHEVY TRUCKS


Delco
Voyager
MAINTENANCE BATTERIES & CHARGERS

LOWRANCE
EAGLE
The World's Best Fish Finders

Rubbermaid®

33

MotorGuide
the Choice of Serious Fishermen

Wrangler
RUGGED WEAR

Parts Plus
AMERICA'S FAMILY OF
AUTO PARTS STORES®

SYSTEMMATCHED
PARTS & ACCESSORIES

MotorGuide® is a registered trademark of Zebco, a division of Brunswick Corporation. Chevrolet® and the Chevrolet® emblem are registered trademarks of the General Motors Corporation. Delco Voyager® is a registered trademark of General Motors Corporation. Lowrance® and Eagle™ are registered trademarks of Lowrance Electronics, Inc. Ranger® Boats and Ranger® Trail are registered trademarks of Wood Manufacturing, Inc. Evinrude® and Johnson® are registered trademarks of Outboard Marine Corporation. Wrangler® is a registered trademark of Wrangler, Inc. Parts Plus® is a registered trademark of Parts Industries Corporation.

