



**For questions, call:
(415) 495-HINT**

Hudson Software USA, Inc.
400 Oyster Point Blvd, Suite 515
South San Francisco, CA 94080
(415) 871-8895

MADE IN JAPAN

INSTRUCTION MANUAL



SUPER NINTENDO
ENTERTAINMENT SYSTEM

BATTLE GRAND PRIX

THANK YOU!

You have just made a perfect choice by selecting this quality Hudson Soft product.

Thank you for choosing "Battle Grand Prix." In order to insure your complete enjoyment of this game, we recommend that you read the manual carefully and follow its instructions and suggestions.

WARNING: PLEASE READ THE ENCLOSED CONSUMER INFORMATION & PRECAUTIONS BOOKLET CAREFULLY BEFORE USING YOUR NINTENDO® HARDWARE SYSTEM OR GAME PAK.



Hudson Soft USA, Inc.
400 Oyster Point Blvd., Suite 515
South San Francisco, CA 94080
(415) 871-8895

LICENSED BY



NINTENDO, SUPER NINTENDO ENTERTAINMENT SYSTEM AND THE OFFICIAL SEALS ARE REGISTERED TRADEMARKS OF NINTENDO OF AMERICA INC. ©1993 NINTENDO OF AMERICA INC.



THIS OFFICIAL SEAL IS YOUR ASSURANCE THAT NINTENDO HAS APPROVED THE QUALITY OF THIS PRODUCT. ALWAYS LOOK FOR THIS SEAL WHEN BUYING GAMES AND ACCESSORIES TO ENSURE COMPLETE COMPATIBILITY WITH YOUR SUPER NINTENDO ENTERTAINMENT SYSTEM. ALL NINTENDO PRODUCTS ARE LICENSED BY SALE FOR USE ONLY WITH OTHER AUTHORIZED PRODUCTS BEARING THE OFFICIAL NINTENDO SEAL OF QUALITY.

Battle Grand Prix™ is a trademark of Hudson Soft USA, Inc. Hudson Soft is a registered trademark of Hudson Soft Co., Ltd. ©1993 Hudson Soft USA, Inc. All rights reserved.



Table of Contents

Safety Precautions	3
Welcome to the Races	4
Getting Started.....	5
How to Play	6
Set Up.....	9
Modification Categories.....	10
Configuration.....	11
Corner and Pit Signs.....	13
For Parents Only	15
Warranty Information	16



Safety Precautions

For greater enjoyment of the game, please take the time to read this manual. The following items are for the care of your game.

1. Avoid subjecting the Game Pak to extreme temperature changes and shocks.
2. Do not touch the terminal connectors. Keep them safe by storing the game in the protective storage case.
3. The use of solvents, thinners, alcohol, benzene and other strong agents can damage the Game Pak.
4. Do not dismantle the Game Pak.



Welcome to the Races!

Prepare to do battle on the roughest speedways across the globe! Your objective is to build the ultimate racing team of driver, pit crew and mean machine. Formula one competition has never been like this - racers muscle their cars for position at impossible speeds while dodging certain disaster at the rails! Split-second timing is crucial to win the lead and hold it against a variety of bruising, menacing adversaries.

Get set for the supreme test of will power and raw nerve as you pilot the world's fastest cars against a host of computer driven foes or in one-on-one action against a friend!



Getting Started

Insert the Battle Grand Prix Game Pak into the Super Nintendo Entertainment System and turn the power switch on. You will use controller #1 for 1-Player games (your car appears on the left side of the track), and controller #2 is used for the 2-Player mode.

Controller Functions:

L Button To downshift (when playing in manual mode).

R Button To shift up (when playing in manual mode).

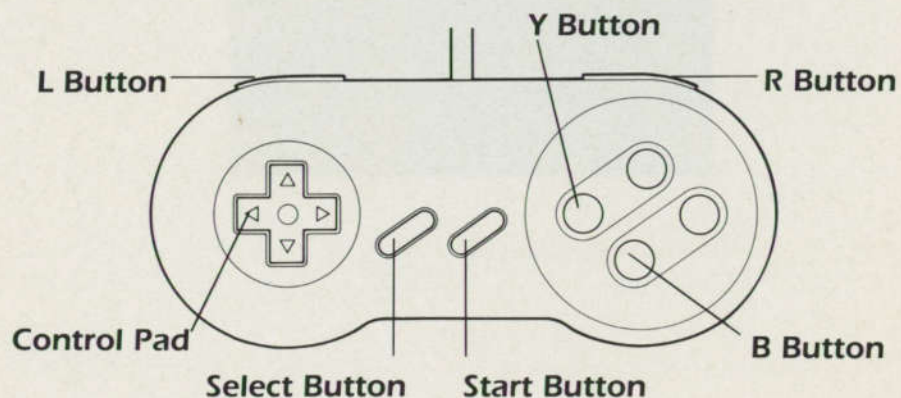
Control Pad Use to steer the car and choose the various options offered.

Start Button Use to pause the game (then retire if you choose).

Select Button Also retires play if pressed during a pause.

Y Button For braking and canceling decisions.

B Button For acceleration and making selections.



How to Play

The game begins by offering you a wide variety of selections. These include your driver, pit crew or team, circuit, and various components of your racing machine. Each selection is listed here in order of appearance.

Select Level

Choose from three different levels, Beginner, Professional or Expert. For each level of difficulty there are a number of race cars and courses. Move the cursor by pressing the control pad to the left or right to the level of your choice, then press the B Button.



Select Mode

Once you've selected your level of competition, choose from 4 different modes using the control pad to move up and down and then the B Button to confirm your choice.



How to Play Cont.

Select Player

Play alone, against a friend or challenge the computer.

Select Driver

There are a total of 48 drivers, 16 drivers per level. Each driver has his own characteristics: strengths, weaknesses, etc. Choose your driver with the control pad (left or right), and then press down to pick your team.



Select Team

There are a total of 24 teams in all, 8 teams for each level. Like the drivers, each team has its own characteristics. Top speed and cornering techniques vary with each team.



There are two kinds of race cars: TYPE 1 (six gears) and TYPE 2 (two gears). Choose your team and car by moving the cursor with the control pad and confirm your selection by pressing the B Button.



How to Play Cont.

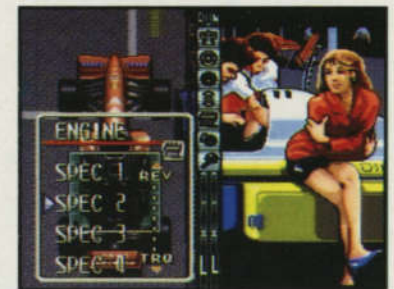
Select Circuit

Survival mode always starts in Cairo. Champion mode always starts in Los Angeles. VS and Slot modes allow you to choose from any of the 24 international circuits.



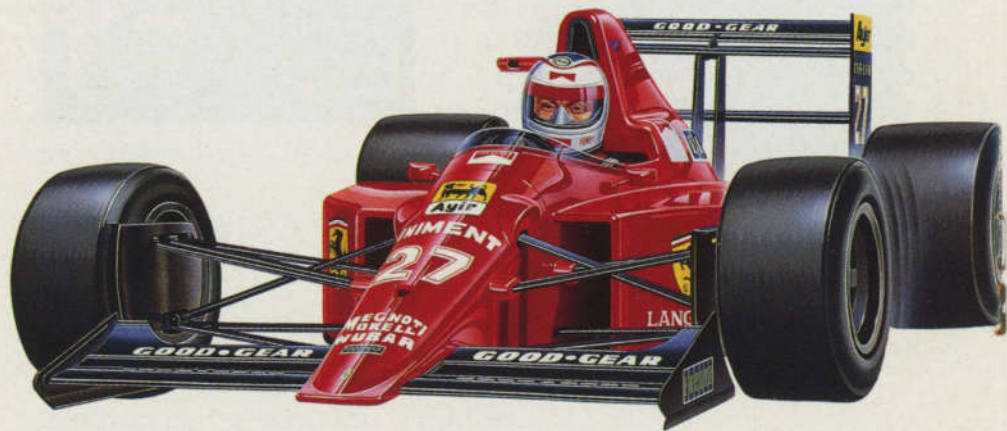
Select Race Length

Once you select a circuit, it will flash on the world map. Now you must choose the duration of the race by how many laps it takes to complete it. The choice is between 5 - 20 laps. Move the control pad to the right or left. Move it up or down to start the race. Select Set Up here to go to the set up display.



Set Up

Modify your racing car (in eight categories) by moving the control pad up or down the set up menu and then press the B Button when you arrive at a category you wish to change. When you have finished altering your vehicle, move the cursor to the RUN message on the screen and press the B Button.



Modification Categories

These selections affect the performance and handling of your car. Experiment with each choice to determine your favorite settings. Remember, what works well for you may not necessarily work for your friends.

Down Force: The force that pushes your car into the ground (for tight cornering, maximum speed, etc.).

Steering: Reaction time between your commands to turn and when it affects your car.

Tires: The types of tires used on the circuit and their effectiveness in different climates.

Suspension: Governs the speed at which your car turns.

Engine: Four types are given, speed and acceleration the major choices.

Foot Brake: Governs the car's braking power.

Auto Brake: Emergency brakes (activated before a crash).

Transmission: Manual or automatic.

Special Note: When the message **Mission Trouble** comes on the screen it means you have had damage to your transmission.



Configuration

This function allows you to select the functions for your controller. In the 2-player mode, you can each customize your own controllers. Use the control pad to make your selections.

On The Screen

This game features the unique **Twin Battle System**, a split screen display that simultaneously shows the two competing race cars. If you are playing solo, the computer's car is shown on the right side and your car on the left. In multiplayer mode, player #1's car is on the left, player #2's car is on the right. In either case, the condition meter will appear in the middle of the screen.



Configuration Cont.

The Condition Meter

This shows you (and your opponent), the condition of each competing car. If a symbol lights up (engine, tires, etc.), it indicates damage to that part of your car. It goes from blue to purple to red. You decide when you need to make a pit-stop to effect repairs. Other information shown in the condition meter: your current position, laps remaining, total time, speed, speedometer and retire.

Retire

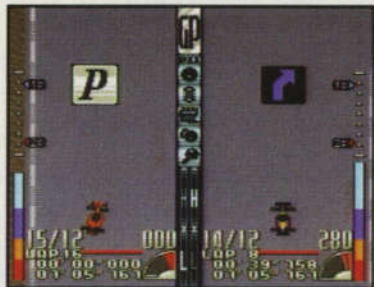
You may retire at any time during the race. To do so, press the Start button (pause), then press the Select button. A screen will come up asking you to verify this decision. Move the cursor to the "Yes" if you wish to retire or "No" if you wish to continue the race.



Corner and Pit Signs

Corner signs appear before you need to make a turn. Depending on the difficulty of the turn, the corner sign appears in colors ranging from blue (normal), orange (sharp) and red (very sharp). Adjust your speed accordingly.

Pit sign are merely reminders that you are approaching the pit-stop. You decide when your car needs service.



Survival mode

In this mode you compete in a series of races. You need to place in a certain level before you progress to the next (and more difficult) circuit. There are three modes: Expert Mode, where you compete in seven races, Professional Mode where you compete in five races and Beginner, where you only compete in three races.



Corner and Pit Signs Cont.

Competition Mode

Compete in various locations around the world. Whether you become the world champion depends on your overall rating from all the races. Expert Level has 16 races, Professional Level has 8 races and Beginner has 4 races. Your position in the starting line-up depends on how well you perform in the 2-minute trials. You do not complete the game until you have finished all the races. Retiring from a race cancels out the competition Mode.



VS Mode

This mode is only playable between two people - the computer cannot play here. Choose your circuit. The first player to rack up two victories wins the match.

Slot Mode

In this mode the steering of your car is automatically done. You handle the accelerator, brakes and gears. This mode is perfect for learning the tricks and breaking points of any circuit! Don't forget to make a needed pit-stop. Just because you do not turn your car doesn't mean it can go without repairs!



For Parents Only

For those of you who have children that are a little too enthusiastic about video games, we offer **Master Higgins 10 Tips for Responsible Play**. This free pamphlet has guidelines for you to work creatively with your children around the issue of their video gaming hobby.

To get your free copy, fill out and return the coupon below to:

Hudson Soft USA, Inc.
Responsible Play Pamphlet
400 Oyster Point Blvd., Suite 515
So. San Francisco, CA 94080

Yes. Please send me Master Higgins 10 Tips For Responsible Play!

Name _____

Address _____

City _____ State _____ Zip _____



Warranty Information

Hudson Soft USA, Inc. ("Hudson") warrants to the original purchaser of this Hudson software product that the medium on which this computer program is recorded is free from defects in materials and workmanship for a period of (90) days from the date of purchase. This Hudson software program is sold "as is", without express or implied warranty of any kind, and Hudson is not liable for any losses or damages of any kind resulting from use of this product.

Hudson agrees for a period of (90) days to either replace, at its option, free of charge, any Hudson software product, postage paid, with proof of date of purchase, at its Factory Service Center.

This warranty is not acceptable to normal wear and tear. This warranty shall be void if the defect in the Hudson software product has arisen through abuse, unreasonable use, mistreatment or neglect. THIS WARRANTY IN LIEU OF ALL OTHER WARRANTIES AND NO OTHER PRESENTATIONS OR CLAIMS OF ANY NATURE SHALL BE BINDING ON OR OBLIGATE HUDSON. ANY IMPLIED WARRANTIES APPLICABLE TO THIS SOFTWARE PRODUCT, INCLUDING WARRANTIES OF MERCHANTABILITY AND FITNESS FOR A PARTICULAR PURPOSE, ARE LIMITED TO THE (90) DAY PERIOD DESCRIBED ABOVE. IN NO EVENT WILL HUDSON BE LIABLE FOR ANY SPECIAL, INCIDENTAL, OR CONSEQUENTIAL DAMAGES RESULTING FROM POSSESSION, USE OR MALFUNCTION OF THIS HUDSON SOFTWARE PRODUCT.

Some states do not allow limitation as to how long an implied warranty lasts and/or exclusion or limitations of incidental or consequential damages so the above limitations and/or exclusions of liability may not apply to you. This warranty does give you specific rights, and you may also have other rights which vary from state to state.



Lap Notes

Lap Notes
